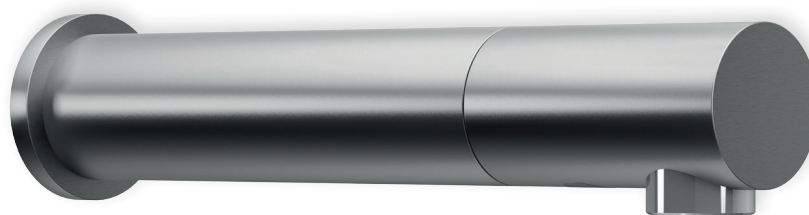


R380-MP

Sensor tap

The R361 electronic wall-mounted sensor tap has a 220mm long spout and is designed for a recessed installation in a solid wall with no rear access. Suitable for all types of sanitary facilities thanks to its multiple choice of finishes and its minimalist look.



References	Power supply	Finishes
R380-MP-S_SEC	Mains	Brushed stainless steel
R380-MP-B_SEC	Mains	Chrome finish
R380-MP-N_SEC	Mains	Matte black finish
R380-MP-S_BAT	Battery	Brushed stainless steel
R380-MP-B_BAT	Battery	Chrome finish
R380-MP-N_BAT	Battery	Matte black finish

Caractéristiques

Finishes	Brushed stainless steel (S) / Chrome finish (B) / Matte black finish (N)
Dimensions	Ø38 x L220mm
Min/Max water inlet pressure	0.5 – 8 bars
Flow rate	3L/min (possibility of 1.3L/min, 1.89L/min or 6L/min)
Aerator	PCA spray (1.3L/min, 1.89L/min, 3L/min) – spray flow SSR PCA Stream (6L/min) – cascade flow
Sensor range	Self-adjusting (adjustable with remote control)
Min. sensor range	35mm
Max. sensor range	300mm
Security time	90 seconds (Can be reduced with remote control)
Water inlet	1 water inlet for cold or pre-mixed water
Maximum temperature	70°C
Hygiene flush	24 hours after the last use (anti-bacterial)
Power supply	Adaptor 9V (_SEC) - cable length 5M Battery case IP67 (_BAT) - 1 x 9V battery - battery supplied
Length of cable from rear of tap	1.10M (possibility to add a cable extension)
Hose length	not supplied
Warranty	10 years

Optional accessories

RSP06001001	Power splitter with 2 outputs
RSP06001002	Power splitter with 3 outputs
RSP06009016	Electrical cable male-female extension 1 meter
RSP06009021	Electrical cable male-female extension 3 meters
RSP07100005	Remote control for electronic taps
RSP08510012	Aerator 1.89L/min flow rate
RSP08510054	Aerator 3L/min flow rate
RSP08510034	Aerator 6L/min flow rate
RSP06530013	Junction box 230/12V for connecting up to 10 taps
RSP06000084	Output cable for junction box female connector

Installation info

Wall cut-out

The R380-MP is designed to be installed where there is no technical duct and/or no permanent access to the rear of the tap for servicing and/or repairs. Before starting, make sure that the cut-out in the wall is large enough to house the casing containing the solenoids, the cables in the duct that connect the casing to the tap, the water pipes (not supplied) and the base of the tap with its support.

Water inlet

Flush the water supply lines thoroughly before installing the faucet. Do not allow dirt, teflon tape or metal particles to enter the faucet. Shut off water supply.

Planning of sanitary facilities

To avoid reflection problems, do not install the sensor directly opposite other faucet/soap dispenser sensors, other infrared devices or a reflective surface such as a stainless steel surface. The choice of other accessories must also be taken into consideration, such as the finish of the waste drain which may reflect light and interfere with the sensor. Particular care must also be taken in positioning the light in the room, especially with tap sensors that are directed downwards. A distance of at least 300mm should be maintained between the sensor and the bottom of the washbasin.

Maintenance

Never use products containing hydrochloric acid, formic acid, acetic acid or bleach containing chlorine. Never use abrasive products or tools (scouring liquid, scouring sponge, dish sponge, stainless steel ball, etc.). Use of any prohibited cleaning or maintenance products or substances could damage the surface of the tap. Only use soap and water when cleaning the surface of the taps and then wipe dry with a clean cloth or towel. When cleaning other areas of the washroom, the faucets should be protected from any splattering of the products that are used.

Certifications

ACS
 CE
 WRAS
 UPC
 WaterMark

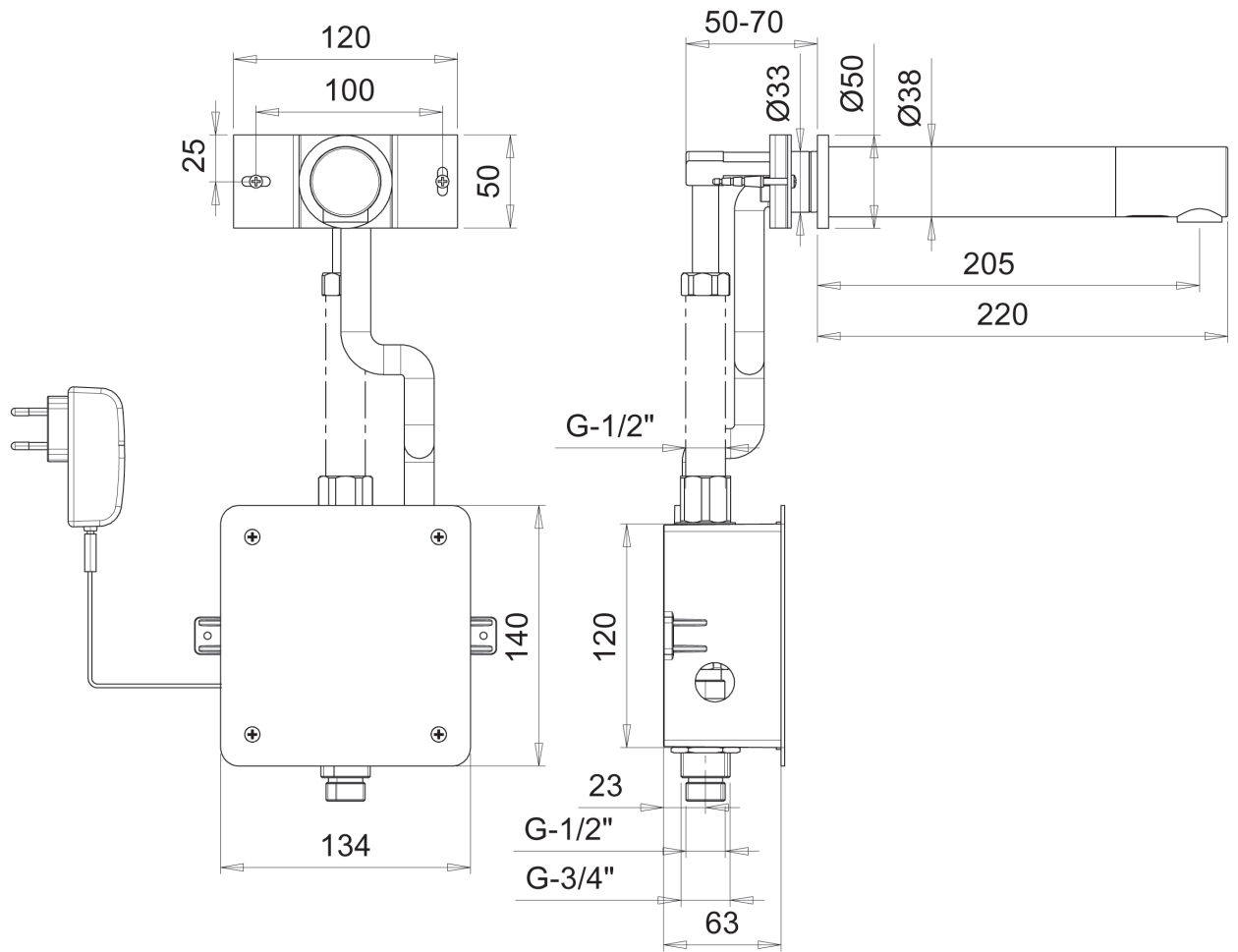
Related products

Soap dispenser	S260-TR
----------------	---------

Related documents

Installation manuel	contact@duten.fr
Certifications	contact@duten.fr

Technical diagram - mains version



Technical diagram - battery version

