

Declaration of Performance No 040883-RK01

According to the Regulation EU No 305/2011

RK01

Manufacturer: Tecfi S.p.A. - S.S. Appia, km 193 - 81050 Pastorano (CE), Italia



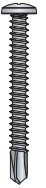
1 - Intended use	
Product-type:	Fastening screws for sandwich panels
Screw type:	Self-drilling screws for sandwich panels
Technical description of the product:	see Table 2
Specification of the intended use in accordance with the applicable EAD:	The intended use comprises fastening screws and connections for indoor and outdoor applications. Fastening screws which are intended to be used in external environments with < C2 corrosion according to the standard EN ISO 12944-2 are made of stainless steel. Furthermore the intended use comprises connections with predominantly static loads (e.g. wind loads, dead loads). The performances given in Table 4 are only valid if anchor is used in compliance with the specifications and conditions given in the Table 3
Base material:	steel substructures type: S235 - S280GD - S320GD - S350GD
Installation:	see Table 3
Loading:	static and quasi static load
Durability:	The intended use comprises fastening screws and connections for indoor and outdoor applications. External environments with < C2 corrosion according to the standard EN ISO 12944-2. For the corrosion protection the rules given in EN 1993-1-3, EN 1993-1-4 and EN 1999-1-4 shall be taken into account. The provisions made in the relevant European Technical Assessment are based on an assumed working life of the fasteners of 25 years
Resistance to fire:	NPD
Reaction to fire:	The metal parts of fastening screws are considered to satisfy the requirements of performance class A1 of reaction to fire, in accordance with the provisions of the EC Decision 96/603/EC (as amended) without the need for testing on the basis of its listing in that decision.
European Assessment Document:	EAD 330047-01-0602 "Fastening screws for sandwich panels"
European Technical Document:	ETA 18/0713
Technical Assessment Body:	Instytut Techniki Budowlanej
Design methods:	Relevant parts of Eurocode and/or relevant national regulations
Assessment and verification of Constancy of Performance:	No. 1020-CPR-010-040883
Notified Body:	TZUS - Technický a Zkušební Ústav Stavební Praha, s.p.
Under the system:	2+

Declaration of Performance No 040883-RK01

According to the Regulation EU No 305/2011

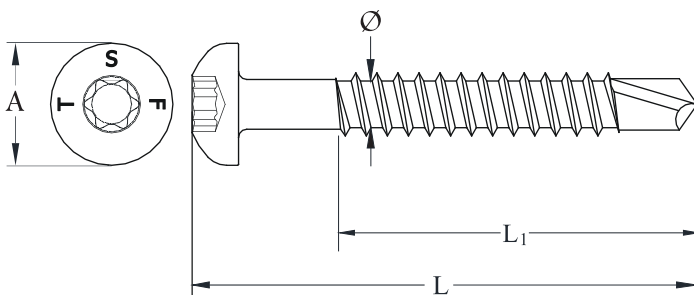
RK01

Manufacturer: Tecfi S.p.A. - S.S. Appia, km 193 - 81050 Pastorano (CE), Italia



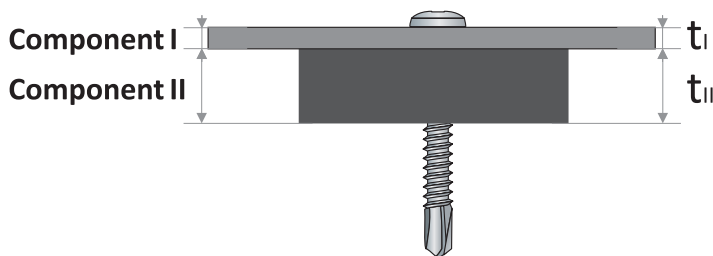
2 - Type of screw

Item	Description	Finishing
RK01	Pan head 6-lobe recess self drilling screw, hardened, zinc plated	Zinc plated min. 5 µm, Cr VI Free



\varnothing	Outside screw diameter
L	Overall screw length
L1	Threaded plus bit length
A	Wrench size
N_k	Characteristic breaking tensile load
V_k	Characteristic breaking shear load

3 - Installation

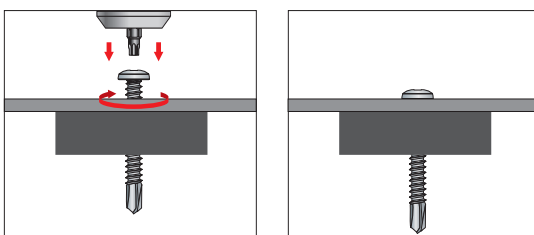


t_I	upper element thickness
t_{II}	lower element thickness

3.1 - Installation data for all lengths of RK01 screws \varnothing 6.3

Maximum drilling capacity	6 mm
Rotational speed of screw under load	1000-1800 [rpm]

3.2 - Installation



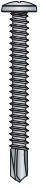
Installation sequence for accessories included in this ETA

Declaration of Performance No 040883-RK01

According to the Regulation EU No 305/2011

RK01

Manufacturer: Tecfi S.p.A. - S.S. Appia, km 193 - 81050 Pastorano (CE), Italia



4 - Item code

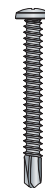
Item Code	∅ [mm]	L [mm]	L ₁ [mm]	t _{fix, min} [mm]	t _{fix, max} [mm]	A [mm]
RK 01 63 016	6,3	16	Full thread	0,5	2 - t _{II}	12,5
RK 01 63 019		19	Full thread	0,5	5 - t _{II}	
RK 01 63 022		22	Full thread	0,5	8 - t _{II}	
RK 01 63 025		25	Full thread	0,5	11 - t _{II}	
RK 01 63 032		32	Full thread	0,5	18 - t _{II}	
RK 01 63 038		38	Full thread	0,5	24 - t _{II}	
RK 01 63 050		50	Full thread	0,5	36 - t _{II}	
RK 01 63 060		60	Full thread	0,5	46 - t _{II}	
RK 01 63 070		70	60	15	56 - t _{II}	
RK 01 63 080		80	60	25	66 - t _{II}	
RK 01 63 100		100	70	35	86 - t _{II}	
RK 01 63 120		120	70	55	106 - t _{II}	
RK 01 63 140		150	70	75	126 - t _{II}	

Declaration of Performance No 040883-RK01

According to the Regulation EU No 305/2011

RK01

Manufacturer: Tecfi S.p.A. - S.S. Appia, km 193 - 81050 Pastorano (CE), Italia



5 - Declared performance according to EAD 330047-01-0602 - Screw only

Characteristic loads	$t_{N,1}$ or $t_{N,2}$ (component I)	t_{II} (component II)					
		2	3	4	5	6	7
[kN]	[mm]						
V_k	0,4	0,78	0,78	0,78	0,78	0,78	0,78
	0,5	1,19	1,19	1,19	1,19	1,19	1,19
	0,55	1,19	1,19	1,19	1,19	1,19	1,19
	0,63	1,51	1,51	1,51	1,51	1,51	1,51
	0,75	1,76	1,76	1,76	1,76	1,76	1,76
	0,88	1,76	1,76	1,76	1,76	1,76	1,76
	1	1,76	1,76	1,76	1,76	1,76	1,76
	1,13	1,76	1,76	1,76	1,76	1,76	-
	1,25	1,76	1,76	1,76	1,76	1,76	-
	1,5	1,76	1,76	1,76	1,76	1,76	-
N_k	0,4	0,36	0,36	0,36	0,36	0,36	0,36
	0,5	0,4	0,4	0,4	0,4	0,4	0,4
	0,55	0,4	0,4	0,4	0,4	0,4	0,4
	0,63	0,68	0,68	0,68	0,68	0,68	0,68
	0,75	0,73	0,73	0,73	0,73	0,73	0,73
	0,88	0,73	0,73	0,73	0,73	0,73	0,73
	1	0,73	0,73	0,73	0,73	0,73	0,73
	1,13	0,73	0,73	0,73	0,73	0,73	-
	1,25	0,73	0,73	0,73	0,73	0,73	-
	1,5	0,73	0,73	0,73	0,73	0,73	-

Max. head displacement	Thickness of sandwich panel	t_{II} (component II)					
		2	3	4	5	6	7
[mm]	[mm]						
u	30	0,7	0,7	0,7	0,7	0,7	0,7
	40	0,9	0,9	0,9	0,9	0,9	0,9
	50	1,2	1,2	1,2	1,2	1,2	1,2
	60	1,4	1,4	1,4	1,4	1,4	1,4
	70	1,6	1,6	1,6	1,6	1,6	1,6
	80	1,8	1,8	1,8	1,8	1,8	1,8
	90	2,1	2,1	2,1	2,1	2,1	2,1
	100	2,3	2,3	2,3	2,3	2,3	2,3
	120	2,8	2,8	2,8	2,8	2,8	2,8
	>140	3,2	3,2	3,2	3,2	3,2	3,2

Declaration of Performance No 040883-RK01

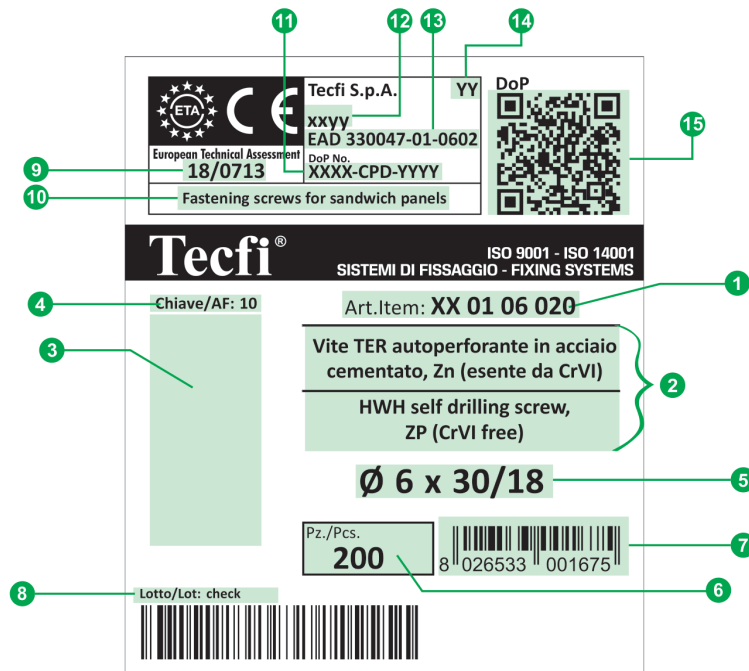
According to the Regulation EU No 305/2011

RK01

Manufacturer: Tecfi S.p.A. - S.S. Appia, km 193 - 81050 Pastorano (CE), Italia



6 - Label



- | | |
|----------------------------------------------------------------------------------------------------------------------------------------------------------------------------------------------------------------------------------------------------------------------------------------------------------------------------------------------------------------------------------------------------------------|--------------------------------------------------------------------------------------------------------------------------------------------------------------------------------------------------------------------------------------------------------------------------------------------------------------------------------------------------------------------------------------------------------------------------------------------------------------------------------------------------------------------------------------------------------------------------------------------------------------------------------------------------------------------------|
| <ul style="list-style-type: none"> 1 Codice articolo / Item Code 2 Descrizioni / Descriptions 3 Immagine / Picture 4 Informazione extra / extra information 5 Misura / Size 6 Numero di pezzi per scatola / Number of Pieces per Box 7 Codice EAN 13 / EAN 13 barcode 8 Lotto / Lot Number 9 Numero di ETA / ETA Number | <ul style="list-style-type: none"> 10 Uso del prodotto previsto dallo standard Europeo applicato, livello di prestazione dichiarato / Intended use of the product as laid down in the European standard applied, level of performance declared 11 Numero di DoP / DoP Number 12 Gamma di prodotto / Product range 13 Specifica tecnica armonizzata / European Technical Specification 14 Le ultime due cifre dell'anno in cui il marchio è stato affisso per la prima volta / Last two digits of the year in which the marking was first affixed 15 Link al DoP (tramite QR code) / Link to DoP (by QR code) |
|----------------------------------------------------------------------------------------------------------------------------------------------------------------------------------------------------------------------------------------------------------------------------------------------------------------------------------------------------------------------------------------------------------------|--------------------------------------------------------------------------------------------------------------------------------------------------------------------------------------------------------------------------------------------------------------------------------------------------------------------------------------------------------------------------------------------------------------------------------------------------------------------------------------------------------------------------------------------------------------------------------------------------------------------------------------------------------------------------|

The performance of the product identified above is in conformity with the set of declared performances. This declaration of performance is issued, in accordance with Regulation (EU) No 305/2011, under the sole responsibility of the manufacturer identified above.

Signed for and on behalf of the manufacturer by:

Name and function	Place and date of issue	Signature
President Antonio Guarino	Pastorano, March 29 th 2019	