

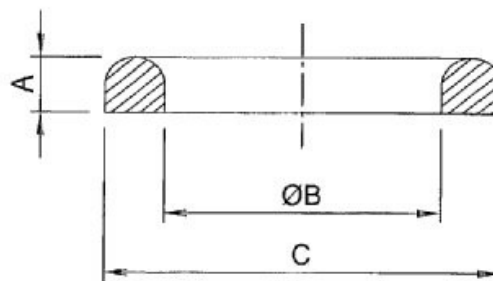
ARTICULO: 2957
Junta para Unión DIN 11851 (Línea Sanitaria)
Seal for Raccord DIN 11851 (Sanitary Line)

Características

1. Construcción en EPDM.
2. Presión de trabajo máxima 10 bar.

Features

1. Made of EPDM.
2. Max. Working pressure 10 bar.



DIMENSIONES GENERALES / GENERAL DIMENSIONS

Ref.	Medida / Size	DN	Dimensiones / Dimensions (mm)			Peso / Weight (Kg)
			A	B	C	
2957 04	1/2"	15	4.5	18	26	0.003
2957 05	3/4"	20	4.5	23	33	0.003
2957 06	1"	25	5	30	40	0.004
2957 07	1 1/4"	32	5	36	46	0.004
2957 08	1 1/2"	40	5	42	52	0.005
2957 09	2"	50	5	54	64	0.006
2957 10	2 1/2"	65	5	71	81	0.007
2957 11	3"	80	5	85	95	0.008
2957 12	4"	100	5	104	114	0.012