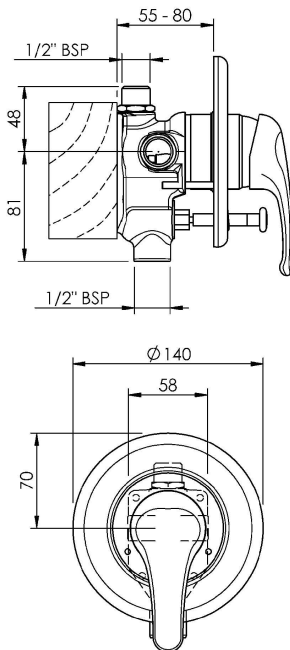


## PROMIX SHOWER MIXER



**CARTRIDGE TYPE:** Ceramic

**CLASSIFICATION:** Suitable for **mains pressure** only

**INLET CONNECTIONS:** 1/2" BSP male

**WORKING PRESSURE:** 150 - 1000kPa

**DIMENSIONS FOR FITTING:** -

**OPERATING TEMPERATURE:** 5 °C - 80 °C

- Cartridge with adjustable temperature and flow settings
- Positive seal between faceplate and wall/body
- Concealed screws to attach faceplate
- Template protects the mixer during installation
- Non-return in shower outlet
- Flow restrictor for shower flow
- Pressure operated spring diverter
- Diverter defaults to spout

PRSHDCP2

Chrome

<http://www.methven.com/nz/promix-shower-mixer-with-diverter>