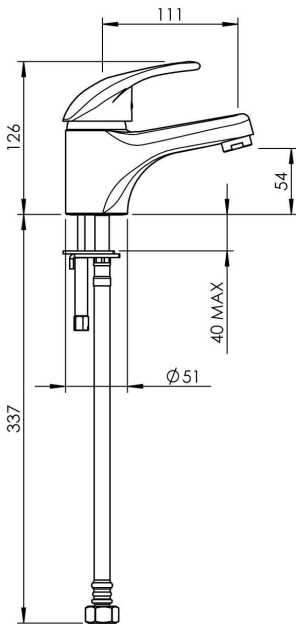


## CELESTE BASIN MIXER



**CONSTRUCTION:** Brass body

**CARTRIDGE TYPE:** Ceramic

**CLASSIFICATION:** Suitable for **all pressures**

**INLET CONNECTIONS:** 1/2" BSP Male

**WORKING PRESSURE:** 35 - 1000kPa

**DIMENSIONS FOR FITTING:** 35mm diameter hole

**OPERATING TEMPERATURE:** 5 °C - 80 °C

**WATER FLOW RATE:** 8.0 l/m on mains pressure - 8.5l/m on low pressure

- Stainless steel flexible hoses for installation
- Flow director and aerator supplied
- Twin stud mounting
- O-ring seal on base
- Ceramic cartridge with adjustable temperature and flow settings
- 3 star WELS rated on mains pressure (8.0 l/pm)
- 3 star WELS rated on low pressure (8.5 l/pm)

TPBCP2

Chrome

<http://www.methven.com/nz/celeste-basin-mixer>