

METHVEN

Fastflow® II



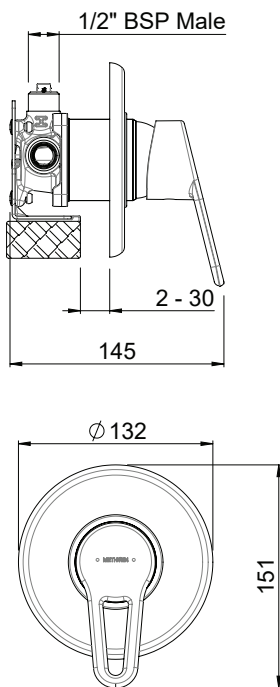
Celeste

Fastflow® II

CELESTE SHOWER MIXER

Developed by Methven in New Zealand, Fastflow is the original standard for delivering constant flow and temperature with unequal pressure. Re-engineered from the ground up, Fastflow II now delivers superior performance.

Improved installation detail and front of wall access to back of wall components, even after fit off, Fastflow II makes installation and maintenance easy.



CONSTRUCTION: Brass body

CARTRIDGE TYPE: Ceramic with Fastflow II technology

CLASSIFICATION: Suitable for all pressure systems

CONNECTIONS: 1/2" BSP Male

WORKING PRESSURE UNEQUAL COLD: 17 - 120kPa

WORKING PRESSURE UNEQUAL HOT: 300 - 500kPa (If supply exceeds 500kPa a pressure limiting valve must be installed)

DIMENSIONS FOR FITTING: Ø100mm hole

OPERATING TEMPERATURE: 5 °C - 80 °C

- Fastflow II technology incorporated for unrivalled performance on unequal pressure
- DR brass body for greater durability and safe water
- Concealed screws to positively fasten faceplate

TPAPS2CP

Chrome