

U

RECTANGULAR DINING TABLE
REF.: 74109



Materials

Structure of lacquered aluminium covered with synthetic fiber SHINTOTEX. Adjustable legs.

Dimensions

Length x width x height:

219 x 118 x 74 cm. / 86.2 x 46.5 x 29.1 in.

Weight: 34,5 Kg no glass - 64,5 Kg with glass /
76 lb no glass - 142 lb with glass.

Volume: 2.04 m³ no glass - 2.05 m³ with glass.

Finish

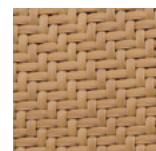
Weavings: Flat Oval 6 mm.

Color:

Ivory 36



Toasted 03



Dark 59

