

La sobria verticalità di Arpa18\_2 rappresenta una moderna estetica che si integra in qualsiasi ambiente. Lo stile di Arpa18\_2 si completa nella modulare funzionalità.



Arpa 18 2, verticale, 20 elementi, altezza 364 mm, larghezza 2020 mm, Bianco Perla

## Caratteristiche costruttive

collettori a sezione circolare diametro 30 mm  
elementi in lamiera d'acciaio diametro 18 mm  
filettature estremità collettore 1/2" Gas destra  
pressione di esercizio massima ammessa: 10 bar  
temperatura di esercizio massima ammessa: 95°C

## Dotazione di serie

sistemi di fissaggio al muro con viti e tasselli  
tappo cieco da 1/2" con copri tappo  
valvola sfiato da 1/2"

## Certificazioni



## Plus



## Dati tecnici

Modello	Profondità (mm)	Altezza (mm)	Interasse (mm)	Peso (kg)	Capacità (lt)	$\Delta t=50^{\circ}\text{C}$ (kcal/h)	$\Delta t=50^{\circ}\text{C}$ (Watt)	$\Delta t=40^{\circ}\text{C}$ (Watt)	$\Delta t=30^{\circ}\text{C}$ (Watt)	$\Delta t=20^{\circ}\text{C}$ (Watt)	Esponente
520	62,0	520	470	0,54	0,23	26,7	31,1	23,3	16,0	9,5	1,296
550	62,0	550	500	0,57	0,24	28,1	32,7	24,5	16,9	10,0	1,296
650	62,0	650	600	0,66	0,28	32,6	37,9	28,4	19,5	11,5	1,298
670	62,0	670	620	0,68	0,29	33,5	38,9	29,1	20,0	11,8	1,298
700	62,0	700	650	0,71	0,30	34,8	40,5	30,3	20,9	12,3	1,299
750	62,0	750	700	0,75	0,32	37,0	43,0	32,2	22,1	13,1	1,300
850	62,0	850	800	0,84	0,36	41,3	48,0	35,9	24,7	14,6	1,302
870	62,0	870	820	0,86	0,37	42,8	49,8	37,2	25,6	15,1	1,302
920	62,0	920	870	0,91	0,39	44,3	51,5	38,5	26,5	15,6	1,303
1220	62,0	1220	1170	1,18	0,50	56,6	65,8	49,1	33,7	19,8	1,308
1520	62,0	1520	1470	1,46	0,62	68,4	79,5	59,3	40,7	23,9	1,312
1820	62,0	1820	1770	1,73	0,74	79,7	92,7	69,1	47,3	27,7	1,319
2020	62,0	2020	1970	1,92	0,82	87,0	101,2	75,3	51,5	30,1	1,324
2220	62,0	2220	2170	2,10	0,90	94,2	109,5	81,4	55,5	32,4	1,329
2520	62,0	2520	2470	2,37	1,01	104,6	121,6	90,3	61,5	35,8	1,336

(\*) Grazie alle elevate prestazioni dei radiatori Arpa18\_2 Verticale, il  $\Delta t$  ideale per la progettazione a bassa temperatura è  $30^{\circ}\text{C}$

Per  $\Delta t$  diversi da  $50^{\circ}\text{C}$  utilizzare la formula:  $Q=Q_n (\Delta t / 50)^n$

### Dotazione di serie

- sistemi di fissaggio al muro con viti e tasselli • tappo cieco da 1/2" con copri tappo • valvola sfiato da 1/2"

## Rese a batteria

Lunghezza (mm)	N° Elementi		520	550	650	670	700	750	850	870	920	1220	1520	1820	2020	2220	2520
109	4	$Watt =$ $W =$	124	131	152	156	162	172	192	199	206	263	318	371	405	438	486
163	6	$Watt =$ $W =$	187	196	227	233	243	258	288	298	309	395	477	556	607	657	730
217	8	$Watt =$ $W =$	249	262	303	311	324	344	384	398	412	526	636	742	810	876	973
271	10	$Watt =$ $W =$	311	327	379	389	405	430	480	498	515	658	795	927	1012	1095	1216
325	12	$Watt =$ $W =$	373	392	455	467	486	516	576	597	618	790	954	1112	1214	1314	1459
379	14	$Watt =$ $W =$	435	458	531	545	567	602	672	696	721	921	1113	1298	1417	1533	1702
433	16	$Watt =$ $W =$	498	523	606	622	648	688	768	796	824	1053	1272	1483	1619	1752	1946
487	18	$Watt =$ $W =$	560	589	682	700	729	774	864	896	927	1184	1431	1669	1822	1971	2189
541	20	$Watt =$ $W =$	622	654	758	778	810	860	960	995	1030	1316	1590	1854	2024	2190	2432
595	22	$Watt =$ $W =$	684	719	834	856	891	946	1056	1094	1133	1448	1749	2039	2226	2409	2675
649	24	$Watt =$ $W =$	746	785	910	934	972	1032	1152	1194	1236	1579	1908	2225	2429	2628	2918
703	26	$Watt =$ $W =$	809	850	985	1011	1053	1118	1248	1294	1339	1711	2067	2410	2631	2847	3162
757	28	$Watt =$ $W =$	871	916	1061	1089	1134	1204	1344	1393	1442	1842	2226	2596	2834	3066	3405
811	30	$Watt =$ $W =$	933	981	1137	1167	1215	1290	1440	1492	1545	1974	2385	2781	3036	3285	
865	32	$Watt =$ $W =$	995	1046	1213	1245	1296	1376	1536	1592	1648	2106	2544	2966	3238		
919	34	$Watt =$ $W =$	1057	1112	1289	1323	1377	1462	1632	1692	1751	2237	2703	3152	3441		
973	36	$Watt =$ $W =$	1120	1177	1364	1400	1458	1548	1728	1791	1854	2369	2862	3337	3643		
1027	38	$Watt =$ $W =$	1182	1243	1440	1478	1539	1634	1824	1890	1957	2500	3021	3523			
1081	40	$Watt =$ $W =$	1244	1308	1516	1556	1620	1720	1920	1990	2060	2632	3180	3708			
1135	42	$Watt =$ $W =$	1306	1373	1592	1634	1701	1806	2016	2090	2163	2764	3339				
1189	44	$Watt =$ $W =$	1368	1439	1668	1712	1782	1892	2112	2189	2266	2895	3498				

Lunghezza (mm)	N° Elementi		520	550	650	670	700	750	850	870	920	1220	1520	1820	2020	2220	2520
1243	46	Watt = W =	1431	1504	1743	1789	1863	1978	2208	2288	2369	3027	3657				
1297	48	Watt = W =	1493	1570	1819	1867	1944	2064	2304	2388	2472	3158					
1351	50	Watt = W =	1555	1635	1895	1945	2025	2150	2400	2488	2575	3290					
1405	52	Watt = W =	1617	1700	1971	2023	2106	2236	2496	2587	2678	3422					
1459	54	Watt = W =	1679	1766	2047	2101	2187	2322	2592	2686	2781	3553					
1513	56	Watt = W =	1742	1831	2122	2178	2268	2408	2688	2786	2884	3685					
1567	58	Watt = W =	1804	1897	2198	2256	2349	2494	2784	2886	2987						
1621	60	Watt = W =	1866	1962	2274	2334	2430	2580	2880	2985	3090						

## Colori e finiture

### STANDARD



**Bianco Standard**  
Cod. 01

### CLASSIC



**Bianco Edelweiss**  
Cod. 34



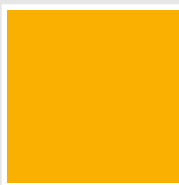
**Avorio - RAL 1013**  
Cod. 02



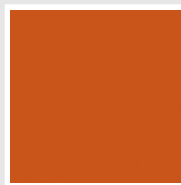
**Beige Cream**  
Cod. 26



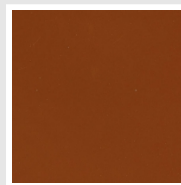
**Giallo - RAL 1021**  
Cod. 04



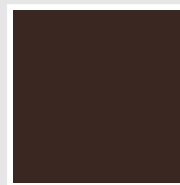
**Giallo Melone -  
RAL 1028**  
Cod. E7



**Arancio - RAL 2004**  
Cod. 17



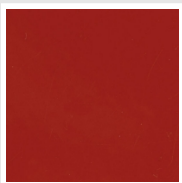
**Marrone Ruggine -  
RAL 8004**  
Cod. E1



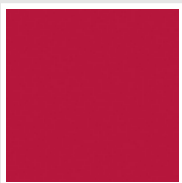
**Marrone - RAL 8017**  
Cod. 09



**Amaranto - RAL  
3003**  
Cod. 06



**Rosso - RAL 3000**  
Cod. 05



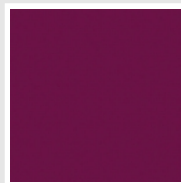
**Rosso Fragola -  
RAL 3018**  
Cod. Y3



**Rosa - RAL 3015**  
Cod. R2



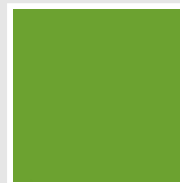
**Lilla Bluastro - RAL  
4005**  
Cod. R3



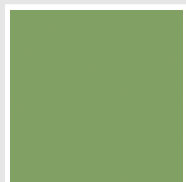
**Porpora Traffico -  
RAL 4006**  
Cod. R6



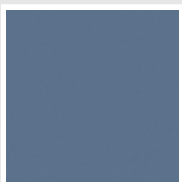
**Verde Bosco - RAL  
6005**  
Cod. 19



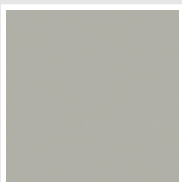
**Verde Erba - RAL  
6018**  
Cod. N3



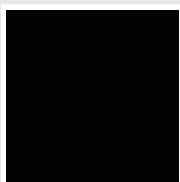
**Verde Salvia - RAL  
6021**  
Cod. E6



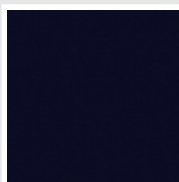
**Blu Pastello - RAL  
5024**  
Cod. G7



**Grigio Manhattan**  
Cod. 03

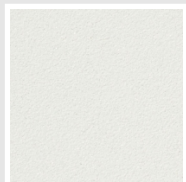


**Nero - RAL 9005**  
Cod. 10

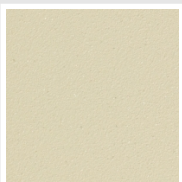


**Deep Blue**  
Cod. 2F

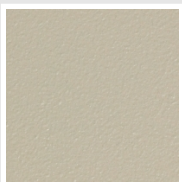
### SPECIAL



**Bianco Perla**  
Cod. 16



**Quartz 1**  
Cod. 1C



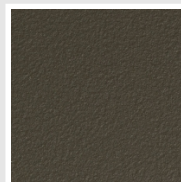
**Sablé**  
Cod. Y4



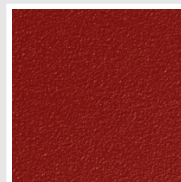
**Quartz 2**  
Cod. 2C



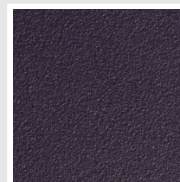
**Sunstone**  
Cod. 2D



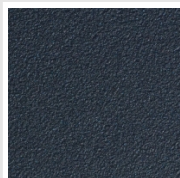
**Bruno Tabacco**  
Cod. 1B



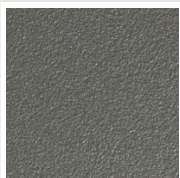
**Flame Red**  
Cod. 7D



**Purple Blue**  
Cod. 1D



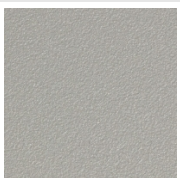
**Azurite 3**  
Cod. 6C



**Grigio Medio**  
Cod. 4D



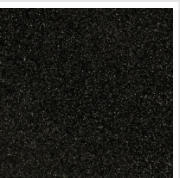
**Grigio Titanio  
Metallizzato - RAL  
9023**  
Cod. L3



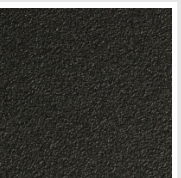
**Grigio Perla**  
Cod. L6



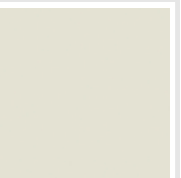
**Nero Grafite**  
Cod. 18



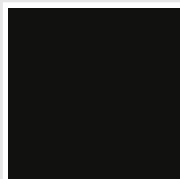
**Grigio Quarzo**  
Cod. 31



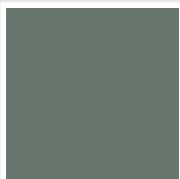
**Nero Satinato**  
Cod. 30



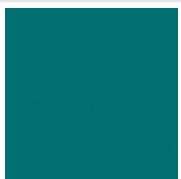
**Bianco Opaco**  
Cod. J8



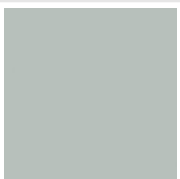
**Nero Opaco**  
Cod. K1



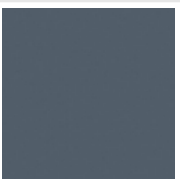
**Agave**  
Cod. 9N



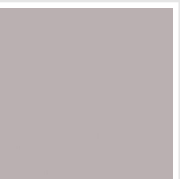
**Blu Baltico**  
Cod. 1P



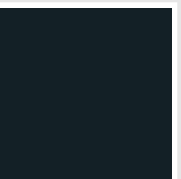
**Ghiaccio**  
Cod. 3P



**Blu Colomba  
Opaco - RAL 5014**  
Cod. 4P



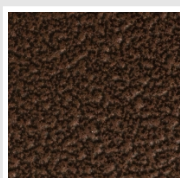
**Grigio Chiaro  
Opaco**  
Cod. 8N



**Grigio Cenere - Ral  
7021**  
Cod. G1



**Grigio Martellato**  
Cod. 32



**Rame Martellato**  
Cod. J4

## RAL



**Altri colori RAL (previa fattibilità)**  
Cod. ALTRIRAL

I colori rappresentati in questa cartella non sono da considerarsi impegnativi. I diversi processi tecnologici di verniciatura ed i materiali utilizzati per la realizzazione possono non avere una perfetta corrispondenza cromatica con il prodotto consegnato. L'azienda Irsap si riserva la facoltà di apportare in qualsiasi momento tutte le modifiche necessarie per il miglioramento del prodotto.