

Arpa12 Orizzontale rappresenta una moderna estetica che si integra in qualsiasi ambiente. Lo stile di Arpa si completa nella modulare funzionalità.



Arpa 12, orizzontale, 30 elementi, altezza 544 mm, larghezza 2020 mm, Marrone - RAL 8017

## Caratteristiche costruttive

collettori a sezione circolare diametro 30 mm  
elementi in lamiera d'acciaio diametro 12 mm  
filettature estremità collettore 1/2" Gas destra  
pressione di esercizio massima ammessa: 10 bar  
temperatura di esercizio massima ammessa: 95°C

## Dotazione di serie

sistemi di fissaggio al muro con viti e tasselli  
tappo cieco da 1/2" con copri tappo  
valvola sfiato da 1/2"

## Certificazioni



## Plus



## Dati tecnici

Modello	Profondità (mm)	Lunghezza (mm)	Interasse (mm)	Peso (kg)	Capacità (lt)
520	40,0	520	470	0,23	0,06
550	40,0	550	500	0,24	0,06
650	40,0	650	600	0,27	0,07
670	40,0	670	620	0,27	0,07
700	40,0	700	650	0,28	0,07
750	40,0	750	700	0,29	0,07
850	40,0	850	800	0,33	0,08
870	40,0	870	820	0,34	0,08
920	40,0	920	870	0,35	0,09
1220	40,0	1220	1170	0,45	0,10
1520	40,0	1520	1470	0,54	0,13
1820	40,0	1820	1770	0,64	0,15
2020	40,0	2020	1970	0,70	0,17
2220	40,0	2220	2170	0,77	0,18
2520	40,0	2520	2470	0,87	0,20

(\*) Grazie alle elevate prestazioni dei radiatori Arpa12 Orizzontale, il  $\Delta t$  ideale per la progettazione a bassa temperatura è 30°C

Per  $\Delta t$  diversi da 50°C utilizzare la formula:  $Q=Q_n (\Delta t / 50)^n$

### Dotazione di serie

- sistemi di fissaggio al muro con viti e tasselli • tappo cieco da 1/2" con copri tappo • valvola sfiato da 1/2"

### Numero Elementi

4 6 8 10 12 14 16 18 20 22 24 26 28 30 32 34 36 38 40 42 44 46 48 50 52 54

Resa a mt lineare Kcal/h a  $\Delta t=50^\circ\text{C}$  190,1232,0273,9315,8357,7399,6441,5483,4525,3567,2609,1653,0695,5736,8776,7815,3852,5888,6 923,4 956,8 989,2 1.020,21.050,11.078,91.106,51.132,9

Resa a mt lineare Watt a  $\Delta t=50^\circ\text{C}$  221,0269,7318,5367,2415,9464,7513,4562,1610,8659,6708,3759,3808,7856,7903,1948,0991,31.033,21.073,71.112,61.150,21.186,31.221,11.254,51.286,61.317,3

Resa a mt lineare Watt a $\Delta t=40^{\circ}\text{C}$	165,7202,3239,1275,9312,8350,3387,9425,8462,5499,3541,1580,6619,0656,4692,6727,9762,1795,2	827,3	858,3	888,3	913,7	937,9	960,9	982,8	1.003,5			
Resa a mt lineare Watt a $\Delta t=30^{\circ}\text{C}$	114,2139,7165,2190,8216,6243,3270,3297,6323,2348,7382,3410,8438,5465,6492,0517,8542,9567,4	591,2	614,2	636,7	652,6	667,5	681,4	694,5	706,6			
Resa a mt lineare Watt a $\Delta t=20^{\circ}\text{C}$	67,6	82,8	98,1	113,5129,0145,6162,5179,7195,0210,2234,4252,3269,8287,0303,8320,4336,7352,6	368,1	383,3	398,2	406,1	413,3	419,8	425,7	431,0
Esponente modifica	1,2921,2891,2851,2821,2771,2671,2561,2451,2461,2481,2071,2031,1981,1941,1891,1841,1791,173	1,168	1,163	1,158	1,170	1,182	1,195	1,207	1,219			

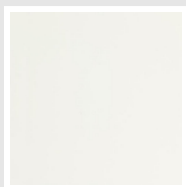
## Rese a batteria

Altezza (mm)	N° Elementi	520	550	650	670	700	750	850	870	920	1220	1520	1820	2020	2220	2520
76	4	$Watt = 115$ $W =$	122	144	148	155	166	188	192	203	270	336	402	446	491	557
112	6	$Watt = 140$ $W =$	148	175	181	189	202	229	235	248	329	410	491	545	599	680
148	8	$Watt = 166$ $W =$	175	207	213	223	239	271	277	293	389	484	580	643	707	803
184	10	$Watt = 191$ $W =$	202	239	246	257	275	312	319	338	448	558	668	742	815	925
220	12	$Watt = 216$ $W =$	229	270	279	291	312	354	362	383	507	632	757	840	923	1048
256	14	$Watt = 242$ $W =$	256	302	311	325	348	395	404	427	567	706	846	939	1032	1171
292	16	$Watt = 267$ $W =$	282	334	344	359	385	436	447	472	626	780	934	1037	1140	1294
328	18	$Watt = 292$ $W =$	309	365	377	393	422	478	489	517	686	854	1023	1135	1248	1417
364	20	$Watt = 318$ $W =$	336	397	409	428	458	519	531	562	745	928	1112	1234	1356	1539
400	22	$Watt = 343$ $W =$	363	429	442	462	495	561	574	607	805	1003	1200	1332	1464	1662
436	24	$Watt = 368$ $W =$	390	460	475	496	531	602	616	652	864	1077	1289	1431	1572	1785
472	26	$Watt = 395$ $W =$	418	494	509	532	569	645	661	699	926	1154	1382	1534	1686	1913
508	28	$Watt = 421$ $W =$	445	526	542	566	607	687	704	744	987	1229	1472	1634	1795	2038
544	30	$Watt = 445$ $W =$	471	557	574	600	643	728	745	788	1045	1302	1559	1731	1902	2159
580	32	$Watt = 470$ $W =$	497	587	605	632	677	768	786	831	1102	1373	1644	1824	2005	2276
616	34	$Watt = 493$ $W =$	521	616	635	664	711	806	825	872	1157	1441	1725	1915	2105	2389
652	36	$Watt = 515$ $W =$	545	644	664	694	743	843	862	912	1209	1507	1804	2002	2201	2498
688	38	$Watt = 537$ $W =$	568	672	692	723	775	878	899	951	1261	1570	1880	2087	2294	2604
724	40	$Watt = 558$ $W =$	591	698	719	752	805	913	934	988	1310	1632	1954	2169	2384	2706
760	42	$Watt = 579$ $W =$	612	723	745	779	834	946	968	1024	1357	1691	2025	2247	2470	2804
796	44	$Watt = 598$ $W =$	633	748	771	805	863	978	1001	1058	1403	1748	2093	2323	2553	2899

Altezza (mm)	N° Elementi		520	550	650	670	700	750	850	870	920	1220	1520	1820	2020	2220	2520
832	46	$Watt =$ $W =$	617	652	771	795	830	890	1008	1032	1091	1447	1803	2159	2396	2634	2989
868	48	$Watt =$ $W =$	635	672	794	818	855	916	1038	1062	1123	1490	1856	2222	2467	2711	3077
904	50	$Watt =$ $W =$	652	690	815	841	878	941	1066	1091	1154	1530	1907	2283	2534	2785	3161
940	52	$Watt =$ $W =$	669	708	836	862	901	965	1094	1119	1184	1570	1956	2342	2599	2856	3242
976	54	$Watt =$ $W =$	685	725	856	883	922	988	1120	1146	1212	1607	2002	2397	2661	2924	3320
1012	56	$Watt =$ $W =$	700	741	875	902	943	1010	1145	1172	1239	1643	2047	2451	2721	2990	3394
1048	58	$Watt =$ $W =$	715	756	894	921	962	1031	1169	1196	1265	1678	2090	2502	2778	3052	
1084	60	$Watt =$ $W =$	729	771	911	939	981	1052	1192	1220	1290	1710	2131	2552	2832	3112	

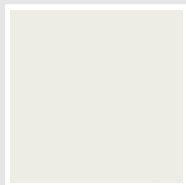
## Colori e finiture

### STANDARD



**Bianco Standard**  
Cod. 01

### CLASSIC



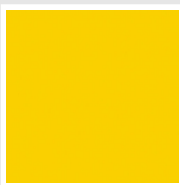
**Bianco Edelweiss**  
Cod. 34



**Avorio - RAL 1013**  
Cod. 02



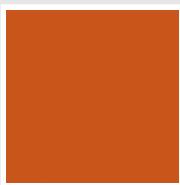
**Beige Cream**  
Cod. 26



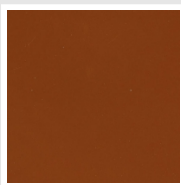
**Giallo - RAL 1021**  
Cod. 04



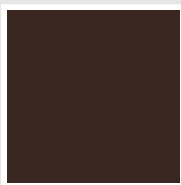
**Giallo Melone -  
RAL 1028**  
Cod. E7



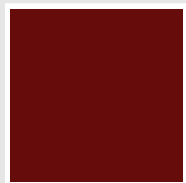
**Arancio - RAL 2004**  
Cod. 17



**Marrone Ruggine -  
RAL 8004**  
Cod. E1



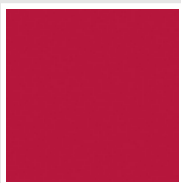
**Marrone - RAL 8017**  
Cod. 09



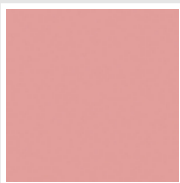
**Amaranto - RAL  
3003**  
Cod. 06



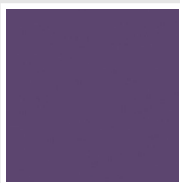
**Rosso - RAL 3000**  
Cod. 05



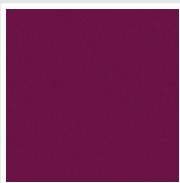
**Rosso Fragola -  
RAL 3018**  
Cod. Y3



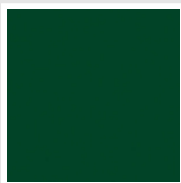
**Rosa - RAL 3015**  
Cod. R2



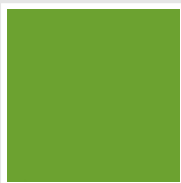
**Lilla Bluastro - RAL  
4005**  
Cod. R3



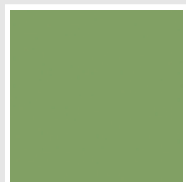
**Porpora Traffico -  
RAL 4006**  
Cod. R6



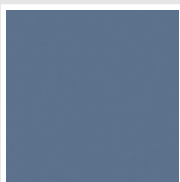
**Verde Bosco - RAL  
6005**  
Cod. 19



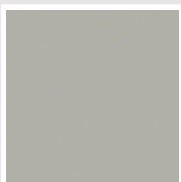
**Verde Erba - RAL  
6018**  
Cod. N3



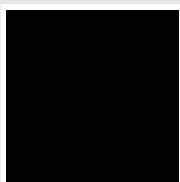
**Verde Salvia - RAL  
6021**  
Cod. E6



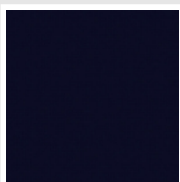
**Blu Pastello - RAL  
5024**  
Cod. G7



**Grigio Manhattan**  
Cod. 03

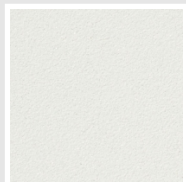


**Nero - RAL 9005**  
Cod. 10

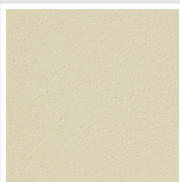


**Deep Blue**  
Cod. 2F

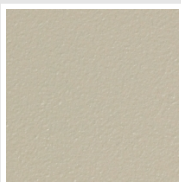
### SPECIAL



**Bianco Perla**  
Cod. 16



**Quartz 1**  
Cod. 1C



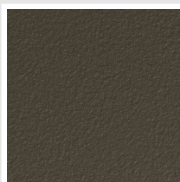
**Sablé**  
Cod. Y4



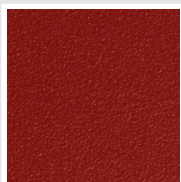
**Quartz 2**  
Cod. 2C



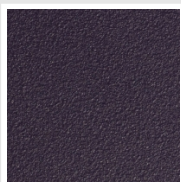
**Sunstone**  
Cod. 2D



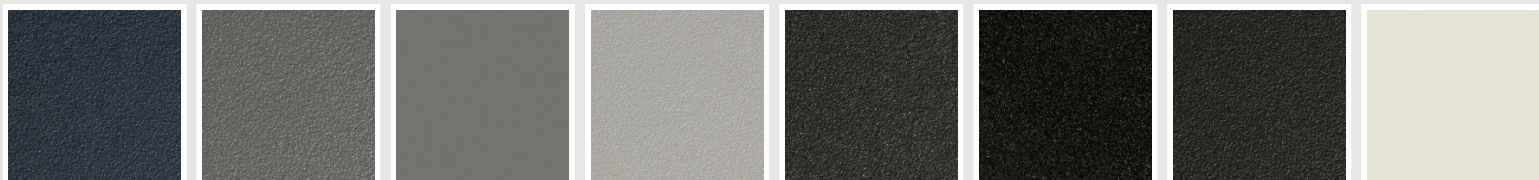
**Bruno Tabacco**  
Cod. 1B



**Flame Red**  
Cod. 7D



**Purple Blue**  
Cod. 1D



**Azurite 3**  
Cod. 6C

**Grigio Medio**  
Cod. 4D

**Grigio Titanio  
Metallizzato - RAL  
9023**  
Cod. L3

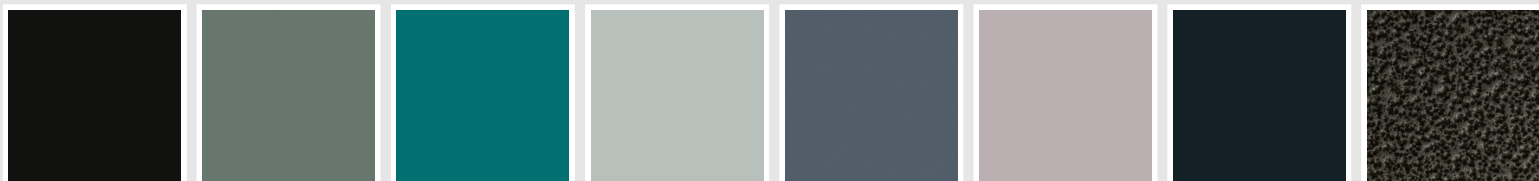
**Grigio Perla**  
Cod. L6

**Nero Grafite**  
Cod. 18

**Grigio Quarzo**  
Cod. 31

**Nero Satinato**  
Cod. 30

**Bianco Opaco**  
Cod. J8



**Nero Opaco**  
Cod. K1

**Agave**  
Cod. 9N

**Blu Baltico**  
Cod. 1P

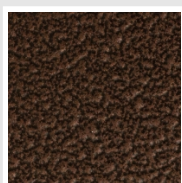
**Ghiaccio**  
Cod. 3P

**Blu Colomba  
Opaco - RAL 5014**  
Cod. 4P

**Grigio Chiaro  
Opaco**  
Cod. 8N

**Grigio Cenere - Ral  
7021**  
Cod. G1

**Grigio Martellato**  
Cod. 32



**Rame Martellato**  
Cod. J4

## RAL



**Altri colori RAL (previa fattibilità)**  
Cod. ALTRIRAL

I colori rappresentati in questa cartella non sono da considerarsi impegnativi. I diversi processi tecnologici di verniciatura ed i materiali utilizzati per la realizzazione possono non avere una perfetta corrispondenza cromatica con il prodotto consegnato. L'azienda Irsap si riserva la facoltà di apportare in qualsiasi momento tutte le modifiche necessarie per il miglioramento del prodotto.