


**IMO Two-hole basin mixer with high spout without pop-up waste - Brushed Dark Platinum**

IMO

29 218 671



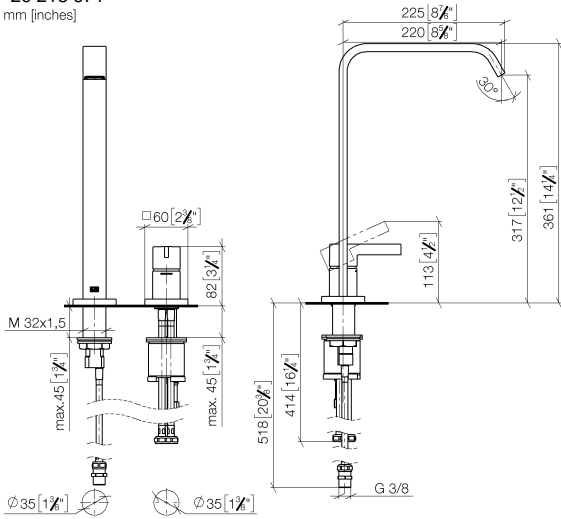
- 220mm projection
- fixed spout
- rectangular, air-enriched flow
- height of mixer 361 mm
- hole diameter spout 35 mm
- hole diameter valve 35 mm
- 1x screw-in M 10 x 1 pressure hose, leak-tested
- 2x screw-in M 10 x 1 pressure hose, leak-tested
- max. flow 4.6 l/min
- lead-free
- This product can help a building meet the requirements of Green Building Rating Systems, e.g. LEED®, BREEAM®, DGNB

	Brushed Dark Platinum	29 218 671-99
	Chrome	29 218 671-00
	Brushed Platinum	29 218 671-06
	Dark Chrome	29 218 671-19
	Brushed Light Gold	29 218 671-27
	Matte Black	29 218 671-33
	Brushed Chrome	29 218 671-93

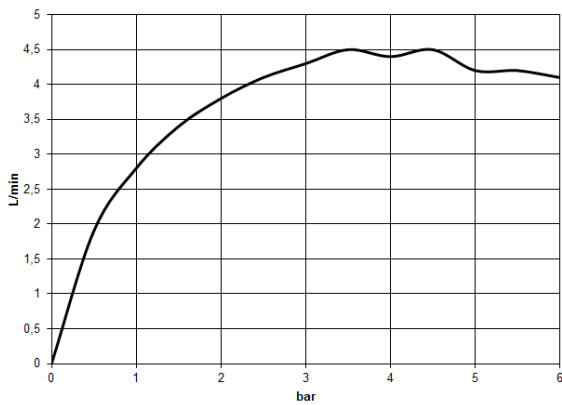
**IMO Two-hole basin mixer with high spout without pop-up waste - Brushed Dark Platinum**

IMO

29 218 671  
mm [inches]



**Flow rate chart**



**Codes & Standards**

DIN 4109

ISO 3822

Ü-Zeichen



IMO Two-hole basin mixer with high spout without pop-up waste - Brushed  
Dark Platinum

---

IMO

29 218 671  
Certificates

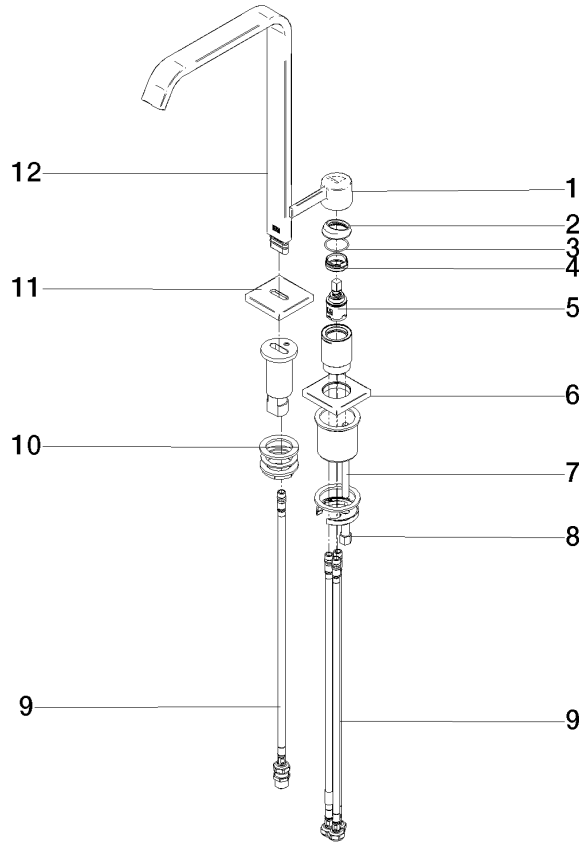
---

LGA\_38

29 218 671

**Product version from 4/1/2024**

Parts for other  
finishes can be found  
here: [Chrome](#)





IMO Two-hole basin mixer with high spout without pop-up waste - Brushed  
Dark Platinum

---

IMO

29 218 671

**Spare parts list**

**Product version from 4/1/2024**

No.	Item Number	Name	Quantity used	Delivery time
	90 20 67 029 00-99	handle	15	-

---

Spare part can no longer be ordered, please order the replacement item