

BAHIA_13

INCASSO / BUILT IN

500x380

Lavabo da incasso sottopiano con troppopieno.
Senza fori rubinetteria sul lavabo.
Installazione sotto il piano del mobile. Dima di taglio inclusa nella scatola.

Undercounter washbasin with overflow.
Whitout faucet holes on the washbasin.
To be installed under the vanity units. Scheme for surface installation is included in the box.

Einbau- Waschbecken Unterbaubecken.
Ohne Hahnlöcher. Schneideschablone in der Box enthalten.

Lavabo à recouvrement sous plan.
Installation sous plan du meuble. Sans trous pour la robinetterie sur le lavabo. Gabarit de montage fourni avec la pièce.

Lavabo de encastre bajo encimera.
Instalación bajo encimera o mueble. Sin orificio para grifería sobre el lavabo. La plantilla de corte se suministra junto con la pieza.

Тисцлавие бассейне Undercounter.
Без отверстия для смесителя на раковине.
установка под полом кабинета. Резка трафарет в коробке.



● BH0500380010TU0



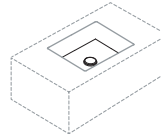
● BH0500380250TU0

INSTALLAZIONE INSTALLATION

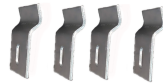
incasso sottopiano
built under



esempi di montaggio
mounting examples



ACCESSORI ACCESSORIES



Y1V501
fissaggio sottopiano
undercounter special fixin
fischer
innovative solutions



Y7AW77 Chrome
Y7AW01 Bi-White

Borchia Troppopieno Uni
Universal Overflow cap
fischer
innovative solutions



Y7AS77 Chrome
Y7AS76 Satin Steel
Y7AS01 Bi-White
Y7AS02 Black Matt
Sifone di scarico **INOX**
INOX drain trap

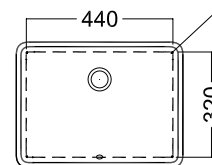
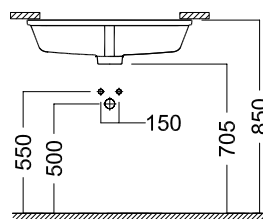
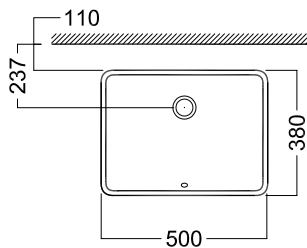


A0Y7A801 Bianco-White
A0Y7A825 BI Matt-White Matt
Piletta in CERAMICA con
tappo "Up & Down" Ø 71 mm
CERAMIC drain siphon with
"Up & Down" cap Ø 71 mm



YXMQ77 Chrome
YXMQ01 (BI-White)
YXMQ25 (BI Matt-White Matt)
Piletta universale
"Up & Down"/ Scarico Libero
con tappo Ø 63 mm
Universal "Free outlet" /
"Up & Down" drain siphon with
cap Ø 63 mm

DISEGNO TECNICO TECHNICAL DESIGN



Foro per installazione sottopiano
Hole for undercounter installation

● 01 BIANCO/ WHITE
WEISS/ BLANCO

● 25 BIANCO MATT/ WHITE MATT
WEISS MATT/ BLANCO MATE