

# DEXTER POWER

Welding tool  
R1510B



ORIGINAL INSTRUCTIONS

**ADEO SERVICES**  
135 Rue Sadi Carnot - CS 00001  
59790 RONCHIN - France

**MADE IN P.R.C. 2019**



**WARNING.** When using electric tools, basic safety precautions, including the following, should always be followed to reduce the risk of fire, electric shock and personal injury.

**Read all these instructions before operating this product and save these instructions.**

1. This appliance can be used by children aged from 8 years and above and persons with reduced physical, sensory or mental capabilities or lack of experience and knowledge if they have been given supervision or instruction concerning use of the appliance in a safe way and understand the hazards involved. Children shall not play with the appliance. Cleaning and user maintenance shall not be made by children without supervision.

2. If the supply cord is damaged, it must be replaced by the manufacturer, its service agent or similarly qualified persons in order to avoid a hazard.

3. This tool must be placed on its stand when not in use.

# Warning!




The machine is intended to connect specific plastic pipes which should be inquired by manufacturer by welding method, but not for welding the conduit either of thermoplastic or metal.

**WARNING: Safe working condition must be insured safe by operator before using this welding tool.**

**! Guarantee that the pipes to be welded mustn't be connected to water main or other working conditions with water before starting the welding working.**

**! Guarantee that no live part such electric wires is in the pipes to be welded before starting the welding working.**

## WARNING SYMBOLS

	In accordance with essential applicable safety standards of European directives.
	Faulty and/or discarded electrical or electronic apparatus have to be collected at the appropriate recycling locations.
	To reduce the risk of injury, user must read instruction manual.

## 1. SPECIFICATIONS

Model No.	R1510B
Rating	220-240V~ 50Hz 1500W
Surface temperature	0°C -300°C
Heating tools	Φ20 Φ25 Φ32 Φ40

## 2. USING

- 1).Before you install the heating tool, make sure that the power is power off.
- 2)Put the tool on the stand(fig.1)
- 3)Fix the heating tool on the machine with the allen wrench.(fig.2)

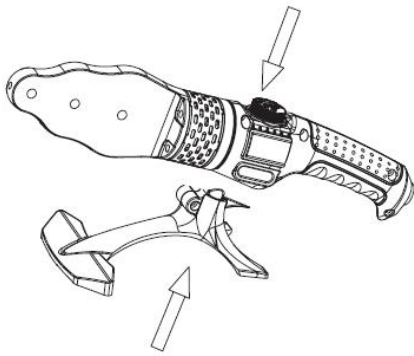


fig.1

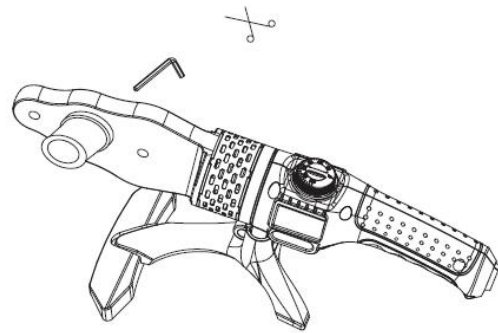


fig.2

- 4).Make sure that the voltage of your power outlet match the before using the tool,also make sure that the thermostat knob is set to position"0" to be avoid unattended switching.(fig.3)

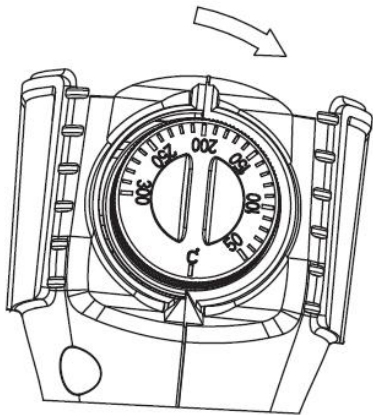


fig.3

Specification(mm)	Heating time (s)
20	5
25	7
32	8
40	12
50	18
63	24
70	30
90	40
110	50
Melting depth(mm)	Cooling time(min)
14	3
16	3
20	4
21	4
22.5	5
24	6
26	8
32	8
38.5	10

**Note: If it is under 5°C, 50% more heating time is needed.**

### 3. Caution

- 1) Please check the outer cover and cables of the tool first. Don't use it if it is damaged.
- 2) The power supply must be earthed.
- 3) Water and various kinds of liquid is prevented from entering the tool. It is prohibited to be used outside on rainy days.
- 4) Keep tinder far away.
- 5) Operators are strongly suggested to wear gloves when working.
- 6) For the safety and good performance of the device, only professionals are allowed to operate the tool or adjust temperature.
- 7) If indicators don't change for long, it means the device is in abnormal working state. Stop your work and turn off the power immediately.
- 8) Take the tool to manufacturer of professionals for repair when it is out of work.

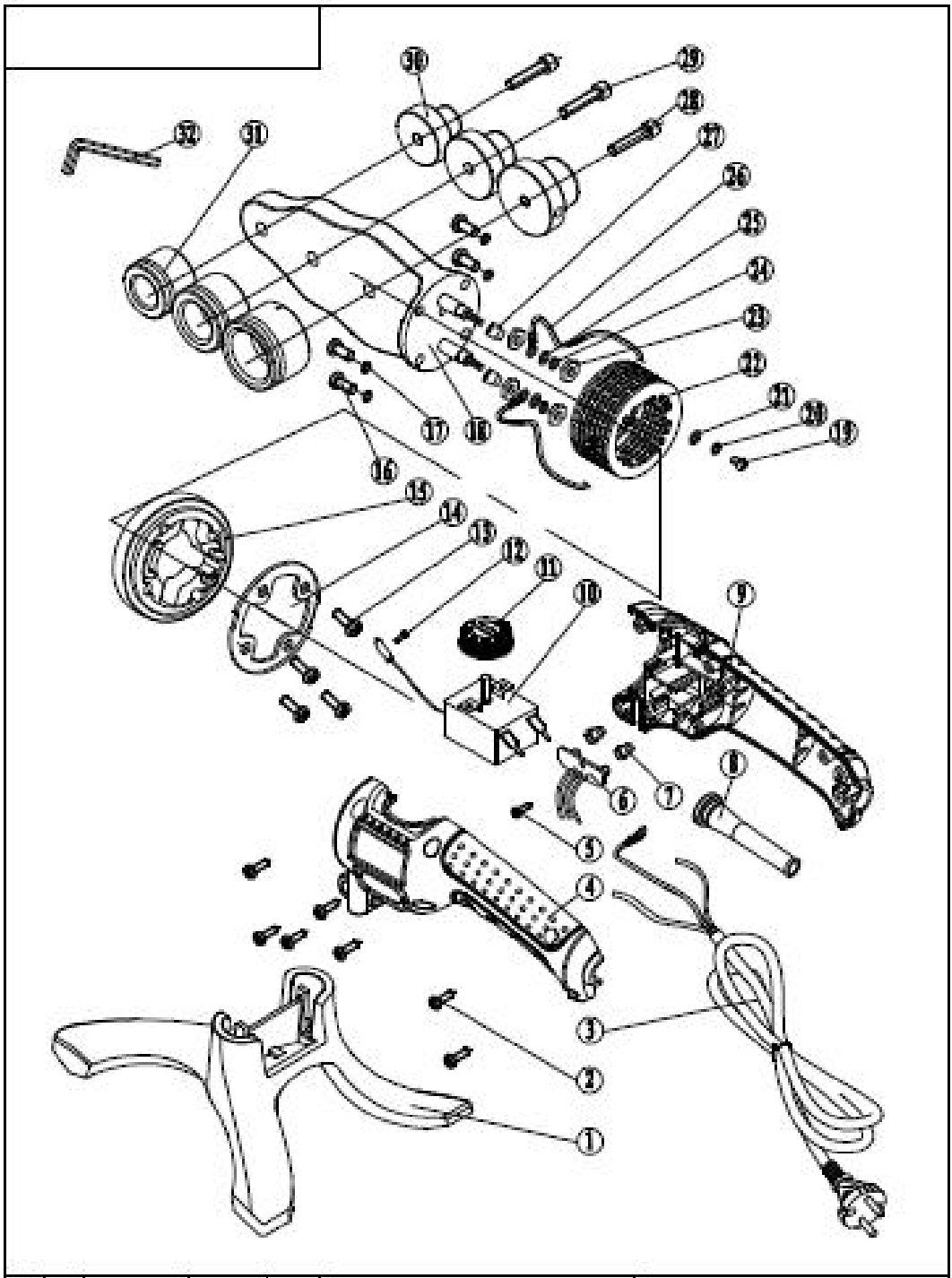


**CAUTION!** Electrical products must not be thrown out with domestic waste. Recycle them at the special disposal centers provided for the purpose. Contact your local authorities or stockiest for advice on recycling.

**■** Your acts a very important role in contributing to re-use, recycling and other forms of recovery of WEEE.

There are potential effects on the environment and human health as a result of the presence of hazardous substances in electrical and electronic equipment.

For disposal, this tool also can be returned to the hardware store or vendor.



# CE Declaration of Conformity

We **ADEO SERVICES**  
135 Rue Sadi Carnot - CS 00001  
59790 RONCHIN - France

Declare that the product detailed below:

WELDING TOOL

**R1510B**

Batch no.:

We declare under our sole responsibility that this product is in conformity with the requirement of following Council Directives and their amendments:

2014/30/EU (EMC Directive)

2014/35/EU (Low Voltage Directive)

2011/65/EU (ROHS Directive)

For the evaluation of conformity, the following harmonized standards were consulted:

EN60335-1:2012+A11:2014

EN60335-2-45:2002+A1:2008+A2:2012

EN62233:2008

**EN 55014-1:2006+A1:2009+A2:2011**

**EN55014-2:2015**

**EN61000-3-2:2014**

**EN61000-3-3:2013**

**IEC 62321-3-1 : 2013**

**IEC 62321-4: 2013**

**IEC 62321-5: 2013**

**IEC 62321-6: 2015**

**IEC 62321-8: 2017**

**IEC 62321-7-1: 2015**

**IEC 62321-7-2: 2017**

**EN 62321: 2009**

**ISO 17075: 2007**

Last two numbers of CE printing: 19

Position of Signatory:

**Richie PERMAL**

**Supplier Quality Leader**

**Authorized representative of Julien Ledin, ADEO Quality Leader**

**ADEO Services 135 Rue Sadi Carnot - CS 00001 59790RONCHIN – France**

**Done in Shanghai 01/01/2019**