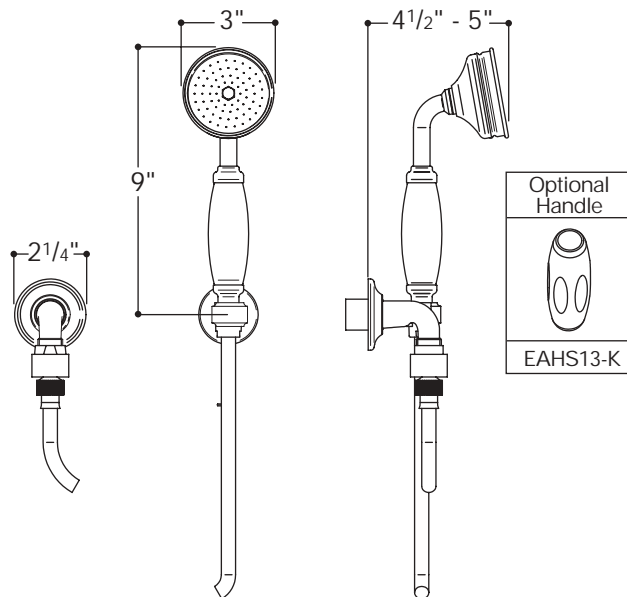


HANDSHOWER ON HOOK**EAHS12-K** (metal handle)**EAHS13-K** (white porcelain handle)**EAHS14-K** (black porcelain handle)**EAHS15-K** (oak handle)**Notes:**

- 1/2" female IPS inlet
- Anti scald protection is the responsibility of the installer and according to applicable codes
- 59" hose

INSTALLATION GUIDELINES:**IMPORTANT:**

- To ensure this product is installed properly, you must read and follow these guidelines.
- The owner/user of this product must keep this information for future reference.
- The risk of scalding exists until the installer has properly calibrated the temperature setting on the thermostatic valve (sold separately).
- Be sure your installation conforms to local codes.
- A wall valve (sold separately) controls on/off/volume and must be installed for proper operation of this product.
- This product must be installed by a professional contractor.
- Refer to the specification and assembly drawings attached. This hand shower is sold partially assembled but shown fully disassembled for illustrative and service purposes only.
- Inspect this product to assure you have all parts required for proper installation.
- Use only a strap wrench or protected/smooth-jaw wrench on any finished surface.

ROUGH IN:

1. Install a wall valve (sold separately) at the desired location. Make sure the rough-in accommodates the 1/2" female IPS hand shower inlet elbow.
2. Finish the rough in by installing a well supported elbow and nipple of the proper dimensions. Note the sliding escutcheon (19,20) has 1/2" of adjustment to accommodate different nipple depths.
3. Determine the ideal location of the hook(11-18) based on the clients preference and install blocking to properly secure the hook.

HAND SHOWER INSTALLATION:

4. Apply pipe thread compound to the male nipple, thread on the supply elbow (19-21) and slide the escutcheon (19, 20) against the wall. If desired, a bead of caulk or silicone may be applied where the escutcheon contacts the wall.
 5. Turn on wall valve to flush out the hand shower supply line.
 6. Thread the vacuum breaker (23) onto the supply elbow making sure a 1/2" washer (22) is installed at the connection. Over tightening may cause internal damage to the vacuum breaker.
 7. Using a 2mm hex wrench (17a), loosen the set screw (17) and remove the mounting plate (12) from the hand shower hook (14-18).
 8. Determine the ideal location of the hook and then drill 2 holes to accommodate the mounting hardware provided.
 9. Position the mounting plate (12) with the flat side facing the wall and then secure it using the 2 anchors (11) and screws (13) provided.
 10. Position the hook against the mounting plate while making sure the 2mm set screw is located at 6 o'clock as shown and then tighten the set screw. The opening of the hook MUST face to the left so the tapered end of the hose fits properly.
 11. Thread the knurled end of the hose (25) onto the vacuum breaker then thread the conical end onto the hand shower (1-9) making sure a 1/2" washer (10, 24) is included at both connection points. Note a combination check valve with flow restrictor are located inside the base of the hand shower (9).
 12. Turn on the wall valve and check for leaks. Rotational adjustment of the hook can be made by removing the hook and turning the 5mm hex bolt (14) on the back side of the hook.
- If further assistance is required, please contact Product Support at 1-800-927-2120 (8am-7pm EST).

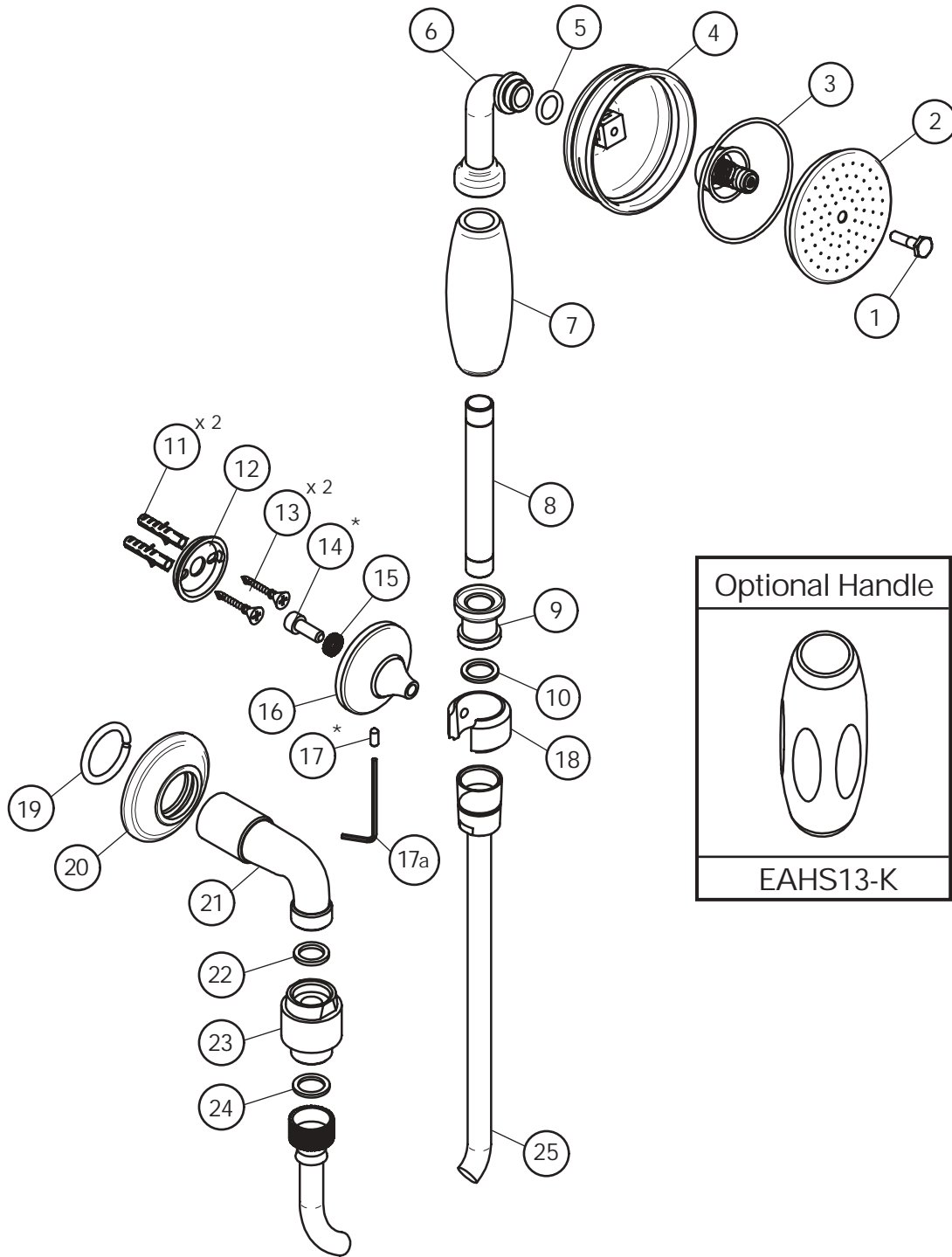
01/04

These guidelines have been prepared for the professional contractor to aid in the installation of:

**EASTON® HANDSHOWER ON HOOK
(EAHS12-K, 13-K, 14-K, 15K)**

All dimensions are based on original specifications and are subject to change and variation. Please consult your Design Associate for current specifications.

W A T E R W O R K S®



⑭*: 5 mm hex

⑰*: 2 mm hex

These guidelines have been prepared for the professional contractor to aid in the installation of:
EASTON® HANDSHOWER ON HOOK
 (EAHS12-K, 13-K, 14-K, 15K)

All dimensions are based on original specifications and are subject to change and variation.
 Please consult your Design Associate for current specifications.