

1190 x 500 in brushed finish with polished deco bar



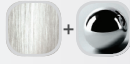
304 GRADE STAINLESS STEEL
304 KALİTE PASLANMAZ ÇELİK



BRUSHED FINISH
FİRÇA YÜZEYİ



POLISHED FINISH
AYNA YÜZEYİ



BRUSHED & POLISHED FINISH
FİRÇA & AYNA YÜZEYİ



MAX. WORKING PRESSURE 6 BAR
MAX. ÇALIŞMA BASINCI 6 BAR



HYDRONIC
MERKEZİ SİSTEM KULLANIMA UYGUN



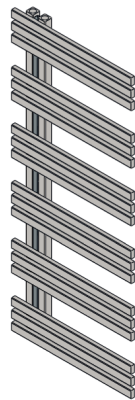
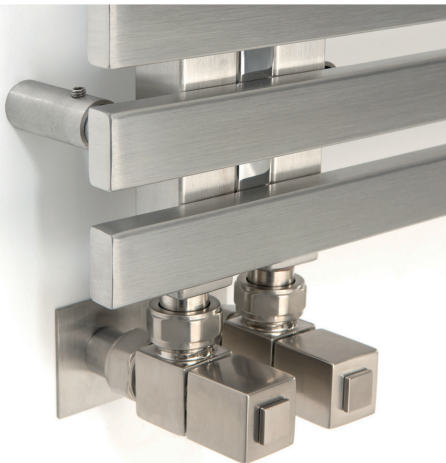
ELECTRIC HEATING
ELEKTRİK KULLANIMA UYGUN



YEARS GUARANTEE
YIL GARANTİ

Size Ebat mm	(W) Width Genişlik mm	(H) Height Yükseklik mm	(K) Pipe Centers Aks Aralığı mm	Tube Quantity Boru Sayısı pcs-adet	Weight Ağırlık kg	HEAT CAPACITY / ISIL KAPASİTE $\Delta t = 60^\circ \text{C} (85/75/20^\circ \text{C})$ kcal/h / watt / btu/h	$\Delta t = 50^\circ \text{C} (75/65/20^\circ \text{C})$ kcal/h / watt / btu/h
770 x 500	500	770	50	12	8.3	221 / 257 / 877	174 / 202 / 689
1190 x 500	500	1190	50	18	12.1	335 / 390 / 1329	264 / 307 / 1048
1400 x 500	500	1400	50	21	14.1	392 / 456 / 1556	307 / 357 / 1218

- Can be installed either left or right handed.
Ön boruları sağa veya sola bakacak şekilde monte edilebilir.



1/2" air vent / purjör

