

Radiatore elettrico con booster. Il radiatore viene riempito con un liquido di raffreddamento ed è combinato con un sistema booster di potenza elettrica di 1000 watt. Questo sistema fornisce una temperatura uniforme nella stanza in cui è installato. Disponibile in 3 altezze e nella larghezza di 550 mm.



Soul Air, altezza 1418 mm, larghezza 550 mm, elettrico, con booster, Grigio Medio

## Caratteristiche costruttive

elementi orizzontali rettangolari in lamiera d'acciaio 50x10 mm  
collettori in lamiera d'acciaio Ø 30 mm  
completo di liquido termovettore e combinato con un sistema booster di potenza elettrica di 1000 watt.  
Questo sistema fornisce una temperatura uniforme nella stanza in cui è installato.

## Dotazione di serie

4 attacchi per fissaggio a muro in tinta con il radiatore  
cronotermostato Wireless

## Certificazioni



## Plus



## Dati tecnici

Modello	Profondità (mm)	Altezza (mm)	Larghezza (mm)	Peso (kg)	Potenza Elettrica (Watt)	Potenza Elettrica con Booster (Watt)
<b>DX</b>						
1054 14 tubi 3 intervalli	110,0	1114	550	16,10	500	1000
1418 19 tubi 4 intervalli	110,0	1478	550	20,80	750	1000
1754 25 tubi 4 intervalli	110,0	1814	550	26,20	1000	1000
<b>SX</b>						
1054 14 tubi 3 intervalli	110,0	1114	550	16,10	500	1000
1418 19 tubi 4 intervalli	110,0	1478	550	20,80	750	1000
1754 25 tubi 4 intervalli	110,0	1814	550	26,20	1000	1000

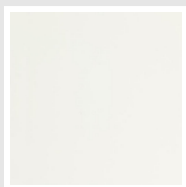
Il radiatore viene fornito con la resistenza sempre montata all'interno del collettore.

### Dotazione di serie

- 4 attacchi per fissaggio a muro in tinta con il radiatore
- cronotermostato Wireless

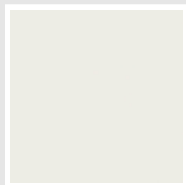
## Colori e finiture

### STANDARD



**Bianco Standard**  
Cod. 01

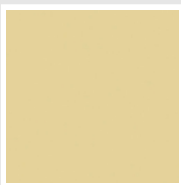
### CLASSIC



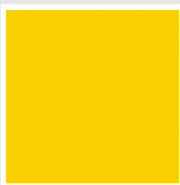
**Bianco Edelweiss**  
Cod. 34



**Avorio - RAL 1013**  
Cod. 02



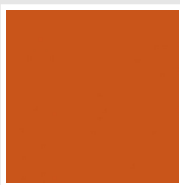
**Beige Cream**  
Cod. 26



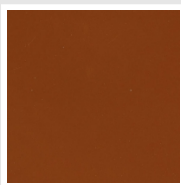
**Giallo - RAL 1021**  
Cod. 04



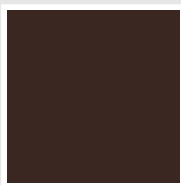
**Giallo Melone -  
RAL 1028**  
Cod. E7



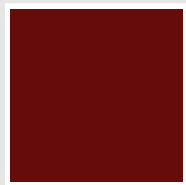
**Arancio - RAL 2004**  
Cod. 17



**Marrone Ruggine -  
RAL 8004**  
Cod. E1



**Marrone - RAL 8017**  
Cod. 09



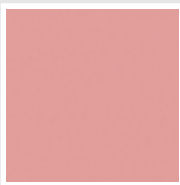
**Amaranto - RAL  
3003**  
Cod. 06



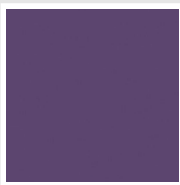
**Rosso - RAL 3000**  
Cod. 05



**Rosso Fragola -  
RAL 3018**  
Cod. Y3



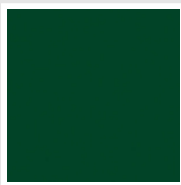
**Rosa - RAL 3015**  
Cod. R2



**Lilla Bluastro - RAL  
4005**  
Cod. R3



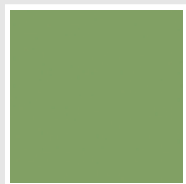
**Porpora Traffico -  
RAL 4006**  
Cod. R6



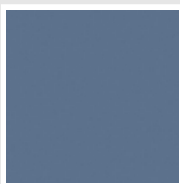
**Verde Bosco - RAL  
6005**  
Cod. 19



**Verde Erba - RAL  
6018**  
Cod. N3



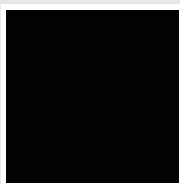
**Verde Salvia - RAL  
6021**  
Cod. E6



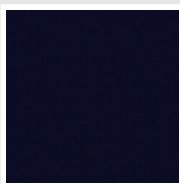
**Blu Pastello - RAL  
5024**  
Cod. G7



**Grigio Manhattan**  
Cod. 03

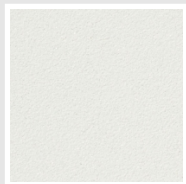


**Nero - RAL 9005**  
Cod. 10



**Deep Blue**  
Cod. 2F

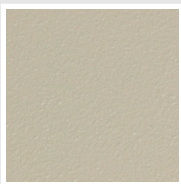
### SPECIAL



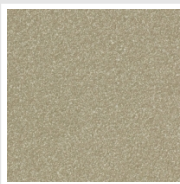
**Bianco Perla**  
Cod. 16



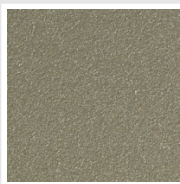
**Quartz 1**  
Cod. 1C



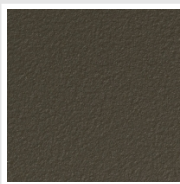
**Sablé**  
Cod. Y4



**Quartz 2**  
Cod. 2C



**Sunstone**  
Cod. 2D



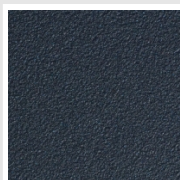
**Bruno Tabacco**  
Cod. 1B



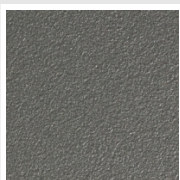
**Flame Red**  
Cod. 7D



**Purple Blue**  
Cod. 1D



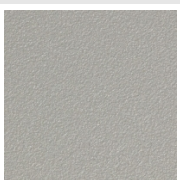
**Azurite 3**  
Cod. 6C



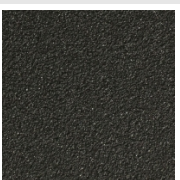
**Grigio Medio**  
Cod. 4D



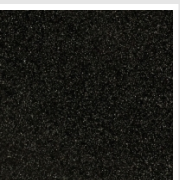
**Grigio Titanio  
Metallizzato - RAL  
9023**  
Cod. L3



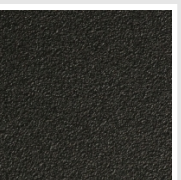
**Grigio Perla**  
Cod. L6



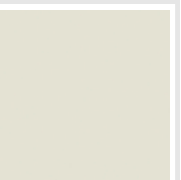
**Nero Grafite**  
Cod. 18



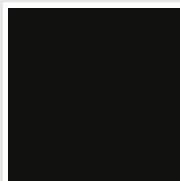
**Grigio Quarzo**  
Cod. 31



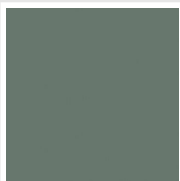
**Nero Satinato**  
Cod. 30



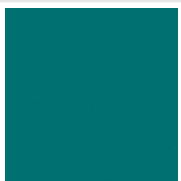
**Bianco Opaco**  
Cod. J8



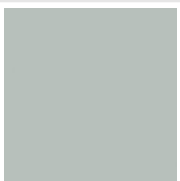
**Nero Opaco**  
Cod. K1



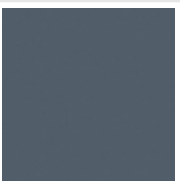
**Agave**  
Cod. 9N



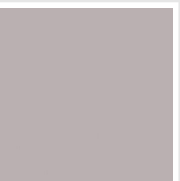
**Blu Baltico**  
Cod. 1P



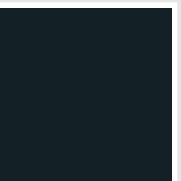
**Ghiaccio**  
Cod. 3P



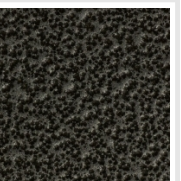
**Blu Colomba  
Opaco - RAL 5014**  
Cod. 4P



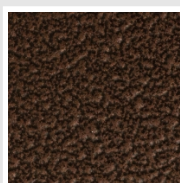
**Grigio Chiaro  
Opaco**  
Cod. 8N



**Grigio Cenere - Ral  
7021**  
Cod. G1



**Grigio Martellato**  
Cod. 32



**Rame Martellato**  
Cod. J4

## RAL



**Altri colori RAL (previa fattibilità)**  
Cod. ALTRIRAL

I colori rappresentati in questa cartella non sono da considerarsi impegnativi. I diversi processi tecnologici di verniciatura ed i materiali utilizzati per la realizzazione possono non avere una perfetta corrispondenza cromatica con il prodotto consegnato. L'azienda Irsap si riserva la facoltà di apportare in qualsiasi momento tutte le modifiche necessarie per il miglioramento del prodotto.