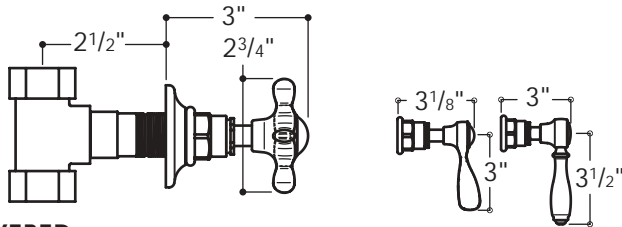


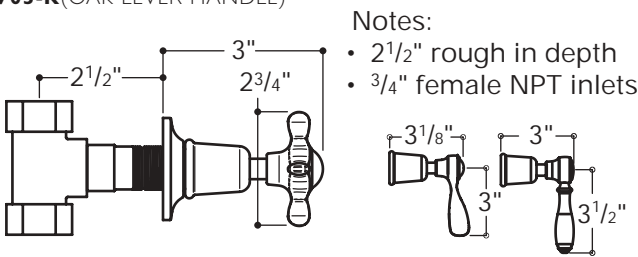
UNCOVERED

- EASV11** (CROSS HANDLE)
- EASV12-K** (ALL METAL LEVER HANDLE)
- EASV13-K** (WHITE PORCELAIN LEVER HANDLE)
- EASV14-K** (BLACK PORCELAIN LEVER HANDLE)
- EASV15-K** (OAK LEVER HANDLE)



COVERED

- EASV01** (CROSS HANDLE)
- EASV02-K** (ALL METAL LEVER HANDLE)
- EASV03-K** (WHITE PORCELAIN LEVER HANDLE)
- EASV04-K** (BLACK PORCELAIN LEVER HANDLE)
- EASV05-K** (OAK LEVER HANDLE)



- Notes:
- 2 1/2" rough in depth
 - 3/4" female NPT inlets

- Inspect this product to assure you have all parts required for proper installation.
- Use only a strap wrench or protected/smooth-jaw wrench on any finished surface.

ROUGH IN:

- **REQUIRED:** Ideal valve body rough-in depth is 2 1/2" from the centerline of the inlets to the face of the finished wall.
1. Remove the tile shield (4) and unthread the threaded sleeve (3) from the valve body.
 2. If soldering any connections, remove the cartridge to prevent damage to seals.
 3. For each fitting that will have water flowing to it, install a wall valve according to the flow direction arrow marked on the side of the wall valve body.
 4. Run 3/4" copper supply lines to the proper height of the valve inlets and be sure to secure all piping and fittings. Install the valve at a height and spread (if applicable) that is comfortable to the user.
 5. Reinstall the cartridge and threaded sleeve, making sure the tile shield is attached.

INSTALLATION GUIDELINES:

IMPORTANT:

- To ensure this product is installed properly, you must read and follow these guidelines.
- The owner/user of this valve must keep this information for future reference.
- Valve body rough-in depth is 2 1/2" from the centerline of the inlets to the face of the finished wall.
- Be sure your installation conforms to federal, state, and local codes.
- Wall valves control on/off/volume and must be installed for each fitting that will have water flowing to it. If using a wall valve with our thermostatic valve, refer to the Installation Guidelines for the Thermostatic Valve which contains related installation information.
- This product must be installed by a professional contractor.
- Refer to the specification and assembly drawings attached. Valves are sold partially assembled but shown fully disassembled for illustrative and service purposes only.
- This valve should be on-site prior to rough-in and allows the installer to visualize the installation.

ATTACH THE TRIM:

- Before attaching the trim, verify the rough-in depth from the centerline of the inlets to the face of the finished wall is 2 1/2".
 - If the rough in depth is between 2 1/2" and 2 3/4", proceed to step 18.
 - If the rough in depth is more than 2 3/4", proceed to step 6.
6. Pull the tile shield (4) off the threaded sleeve (3) and then thread the handle trim connector assembly (6-10) onto the threaded sleeve until it stops.
 7. Slide the escutcheon (5) onto the handle trim connector assembly and then thread on the handle (14-17).
 8. Slide the escutcheon (5) back until it contacts the nut (14).
 9. Measure the distance from the face of the finished wall to the back side of the escutcheon. This measurement will be the length of threaded sleeve that will be cut off in step 11.
 10. Remove the handle assembly, handle trim connector (6-10), and threaded sleeve.
 11. Mark and then cut the threaded sleeve the amount equal to what was measured in step 8. Do NOT cut the end of the threaded sleeve that has internal threads or handle trim

12/03 These guidelines have been prepared for the professional contractor to aid in the installation of: **EASTON® WALL VALVE TRIM (UNCOVERED-EASV11,12-K,13-K14-K,15-K)(COVERED-EASV01,02-K,03-K,04-K,05-K)**
 All dimensions are based on original specifications and are subject to change and variation. Please consult your Design Associate for current specifications.

12. Thread the threaded sleeve back onto the valve stem (2) and mark the stem at a point that is flush with the end of the threaded sleeve.
 13. Remove the threaded sleeve and valve stem and then cut the valve stem 1/2" BEYOND the mark made in step 11.
 14. Reinstall the valve stem and then the threaded sleeve and make sure the stem tip is 1/2" beyond the end of the sleeve as shown in Figure 2.
 15. Attach the handle trim connector and handle assembly to the threaded sleeve. Do not over-tighten the trim connector or the handle may bind.
 16. Slide the escutcheon back against the nut. Adjust the handle trim connector to make sure there are no gaps between the escutcheon (5) and nut (14). If gaps remain, cut the threaded sleeve and/or the valve stem.
 17. Go to step 22.
 18. Pull the tile shield (4) off the threaded sleeve (3) and unthread the sleeve from the valve body.
 19. Unthread the valve stem (2) and cut off 5 of the splined sections so the trim connector assembly (6-10) can be threaded onto the valve stem.
 20. Reinstall the valve stem, thread the handle trim connector (6-10) onto the valve stem and slide the escutcheon (5) onto the connector.
 21. Thread the handle assembly (14-17) onto the handle trim connector and then slide the escutcheon back against the nut (14). Adjust the handle trim connector to make sure there are no gaps between the escutcheon (5) and nut (14). If gaps remain, thread the handle trim connector further onto the valve stem. If the handle does NOT thread on, loosen the connector to expose more threads on the connector sleeve (8).
 22. Remove the handle assembly (14-17) and escutcheon (5) and then apply a bead of silicone to the back side of the escutcheon to create a seal against the wall. Reinstall the escutcheon and handle assembly.
 23. Install the index (19) using the adhesive pad (18).
- If further assistance is required, please contact Product Support at 1-800-927-2120 (8am-7pm EST).

These guidelines have been prepared for the professional contractor to aid in the installation of:
EASTON® WALL VALVE TRIM (UNCOVERED-EASV11,12-K,13-K14-K,15-K)(COVERED-EASV01,02-K,03-K,04-K,05-K)
 All dimensions are based on original specifications and are subject to change and variation.
 Please consult your Design Associate for current specifications.

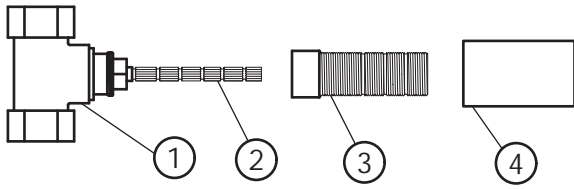
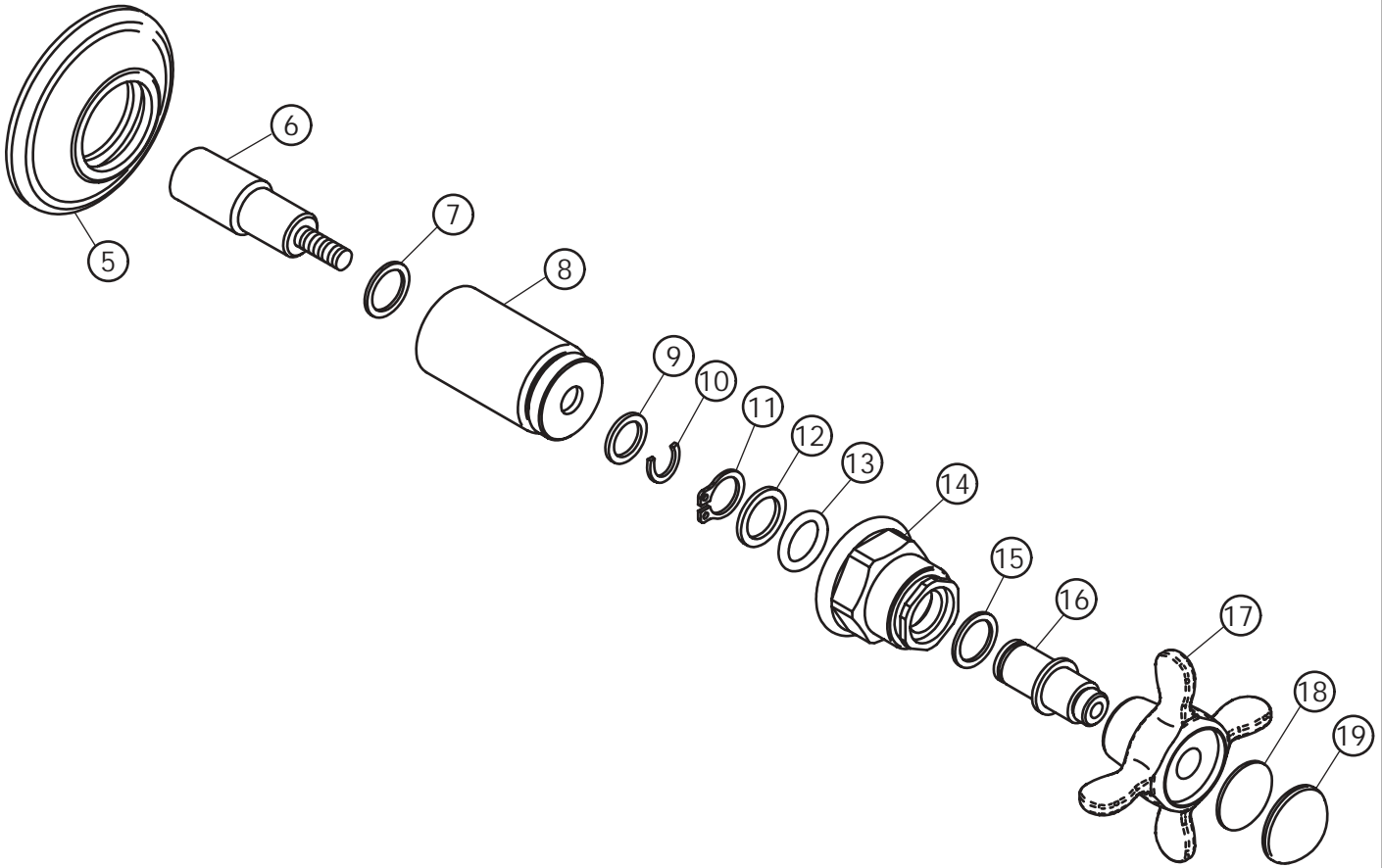
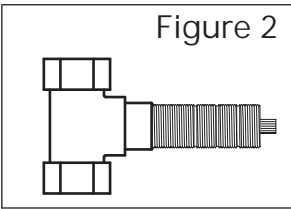


Figure 2



12/03 These guidelines have been prepared for the professional contractor to aid in the installation of:
EASTON® WALL VALVE TRIM (UNCOVERED-EASV11,12-K,13-K,14-K,15-K)(COVERED-EASV01,02-K,03-K,04-K,05-K)
 All dimensions are based on original specifications and are subject to change and variation.
 Please consult your Design Associate for current specifications.

W A T E R W O R K S®