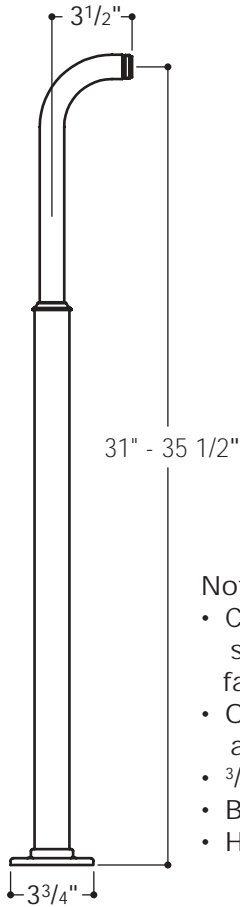


EATU32



Notes:

- Check tub, tub filler dimensions and spread to assure the spout projects far enough into the tub.
- Optional 2" projection extension available, Part #: WWPTU20.
- 3/4" sweat connections
- Blocking is mandatory for stability.
- Height range: 31"-35 1/2".

- Inspect this product to assure you have all parts required for proper installation.
- Use only a strap wrench or protected/smooth-jaw wrench on any finished surface.
- Install accessible hot and cold service stop valves to facilitate servicing.

ROUGH IN:

1. Run well supported 3/4" hot and cold copper supply lines for maximum water flow. Make sure the supply spread matches the on-center spread of the tub filler that is being used.
2. Determine the location where the supplies will come up through the floor and install a piece of 2 x 10 on its side to serve as a 10" blocking surface for securing the legs to the floor.
3. Drill a 1 1/8" hole in the floor with the proper spread for each of the supplies to pass through.
4. Run the 3/4" copper supplies up through the finished floor and then cap-off each line.

LEG INSTALLATION:

5. Slide the rough brass flange (10) down over the supply line and then position the screw holes to the desired location.
6. Drill 6 holes to accommodate all the screws that will secure the leg to the floor.
7. Screw the flange down onto the floor using the 2 unfinished 2 3/8" screws (9) provided. Make sure to use the 2 counter sunk holes for this step.
8. Solder the supply line to the inner diameter of the flange for added stability.
- **IMPORTANT:** The maximum height of the legs is 35 1/2" and the minimum is 31".
9. Determine what the ideal leg height is for your installation, making sure that BOTH o-rings (3) contact the finished surface of the union. Depending on leg height, you will need to cut either the union (2) or the supply line.
For Example: At the max height of 35 1/2" and 4" of exposed copper supply line above the finished floor, you will need to cut 4" of copper off the deck union.
10. Place a 3/4" sweat connector onto the copper supply.
11. Slide the union (2) into the legs (5) until enough copper extends out the bottom of the leg to make the copper connection.

INSTALLATION GUIDELINES:

IMPORTANT:

- To ensure this product is installed properly, you must read and follow these guidelines.
- The owner/user of this product must keep this information for future reference.
- Be sure your installation conforms to federal, state, and local codes. Anti scald protection is the responsibility of the installer and according to applicable codes.
- This product and the tub filler should be on-site prior to rough in and allows the installer to visualize the installation and verify the center spread.
- Check tub and tub filler dimensions to assure the spout projects far enough into the tub.
- Refer to the specification and assembly drawings attached. This product is sold partially assembled but shown fully disassembled for illustrative and service purposes only.

These guidelines have been prepared for the professional contractor to aid in the installation of: **EASTON® FREESTANDING LEGS (EATU32)**

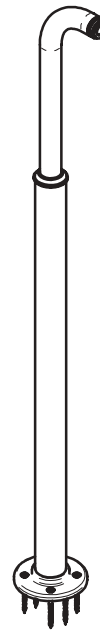
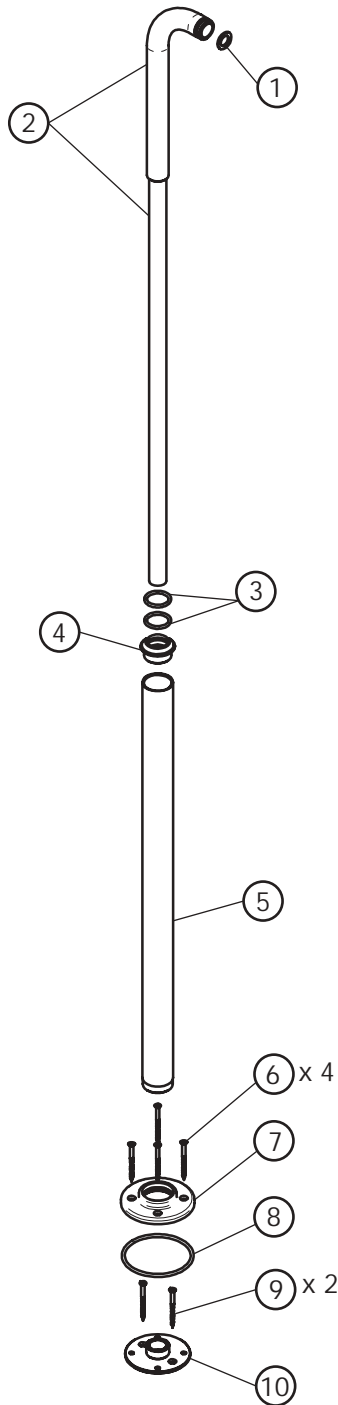
1/05

All dimensions are based on original specifications and are subject to change and variation. Please consult your Design Associate for current specifications.

W A T E R W O R K S®

12. Place 1 large rubber o-ring (8) down onto the perimeter of the flange (10).
 13. Dry fit all connections and then slide the leg down until the escutcheon (7) contacts the surface of the finished floor.
 14. Check all dimensions including height, spread, and tub filler projection and then verify that adequate connections can be made. Adjust as needed.
 15. Slide the leg up the union and complete final solder connections.
 16. Follow the Installation Guidelines included with the tub filler to secure the tub filler to the legs, making sure a 3/4" rubber washer (1) is used at the tub filler/union connection.
 17. Turn the supplies on and check for leaks.
 18. Slide the leg down the union and then screw the escutcheon (7) to the floor using the 4 finished 2 3/8" screws (6) provided.
- If further assistance is required, please contact Product Support at 1-800-927-2120 (8am-7pm EST).

These guidelines have been prepared for the professional contractor to aid in the installation of:
EASTON® FREESTANDING LEGS (EATU32)



These guidelines have been prepared for the professional contractor to aid in the installation of:
EASTON® FREESTANDING LEGS (EATU32)

1/05

All dimensions are based on original specifications and are subject to change and variation.
 Please consult your Design Associate for current specifications.

W A T E R W O R K S®