

BARCELONA
DESIGN



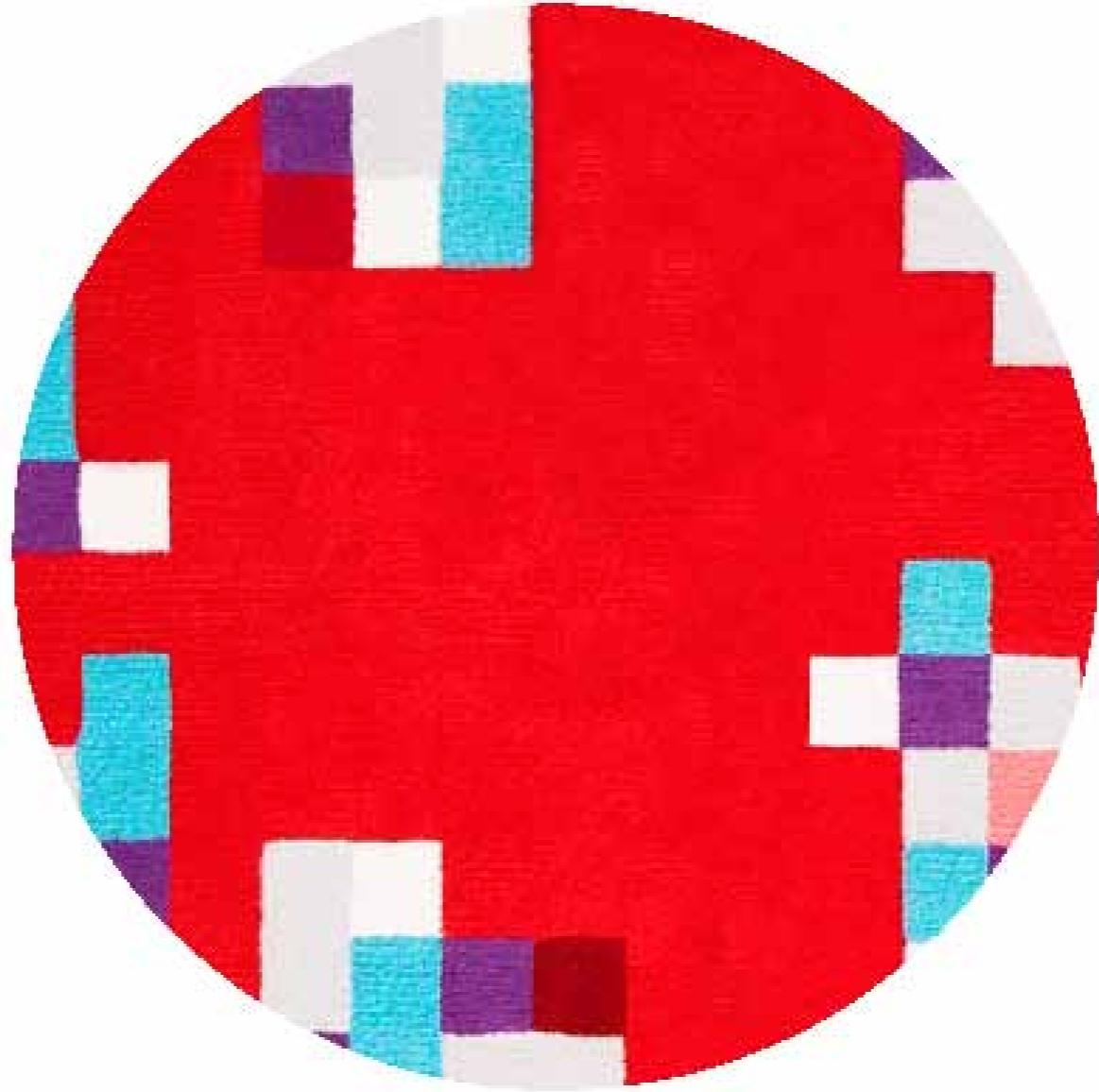
Продажа дизайнерской мебели
света и аксессуаров
по всей России

8 (800) 500-70-36
hello@barcelonadesign.ru
www.barcelonadesign.ru

JAPAN COLLECTION

FROM TOKIO TO HOKKAIDO

DESIGN ENRIQUE EGUINO





Продажа дизайнерской мебели,
света и аксессуаров
по всей России

8 (800) 500-70-36
hello@barcelonadesign.ru
www.barcelonadesign.ru



1 TOKYO UDDALL

This is an impressive 248 metres high building located in SHINJUKU one of the eastern neighbourhoods of Tokyo. The building was designed by TANGE KENZO and houses the City Council of Tokyo. The building is also known as TAX TOWER, because of the excessive cost of its construction.



BARCELONA
DESIGN



Продажа дизайнерской мебели,
света и аксессуаров
по всей России

8 (800) 500-70-36
hello@barcelonadesign.ru
www.barcelonadesign.ru





2 TOKYO AT NIGHT

The city lights at night provide an unforgettable experience that can be enjoyed from the restaurant of the KEIO PLAZA HOTEL.



BARCELONA
DESIGN



Продажа дизайнерской мебели,
света и аксессуаров
по всей России

8 (800) 500-70-36
hello@barcelonadesign.ru
www.barcelonadesign.ru



3 KAMAKURA BUDDHA

This giant bronze statue known as the AMITHABA BUDDHA dating from the 13th century, used to be part of a temple, which was destroyed by a tsunami in 1945. It weights 93 tons and is 13.5 metres high. This statue impresses the tourists who find themselves face to face with this beauty of peace and calm.



BARCELONA
DESIGN

Продажа дизайнерской мебели,
света и аксессуаров
по всей России

8 (800) 500-70-36
hello@barcelonadesign.ru
www.barcelonadesign.ru





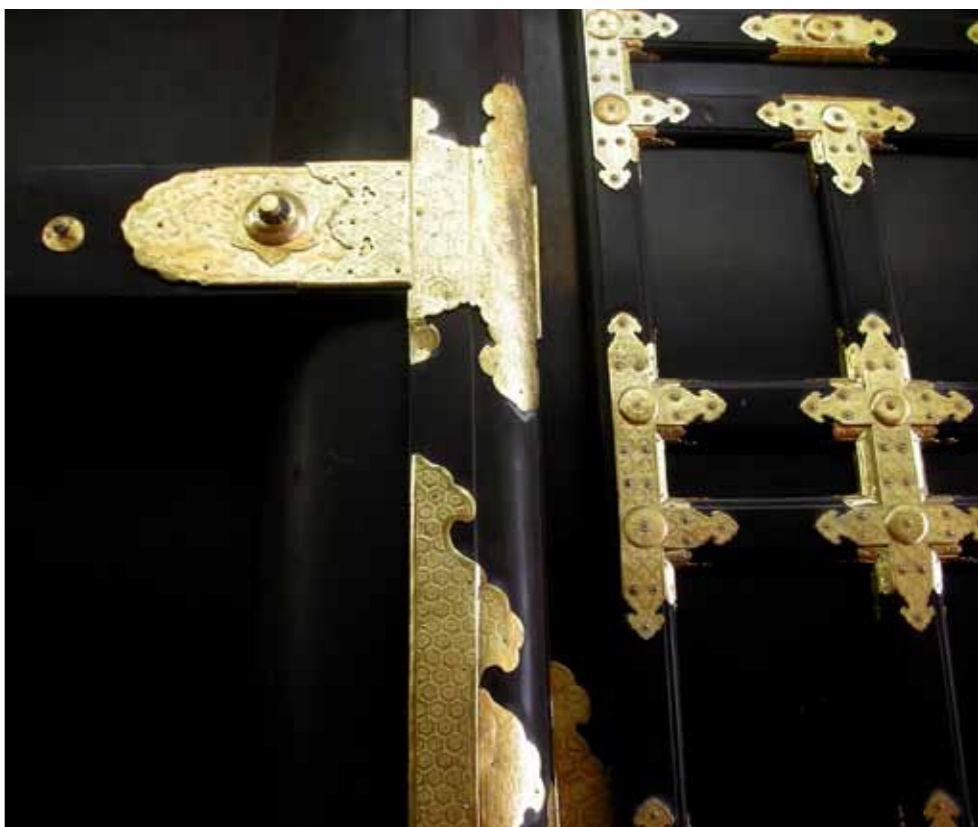
4 NIKKO WATERFALL

The KEGON waterfalls have a vertical drop of 96 metres to the DAIYA river. They were formed as a consequence of a volcanic eruption. The waterfalls are located in a jungle filled with lakes and hot springs, where the monkeys feel at home.



8 (800) 500-70-36
hello@barcelonadesign.ru
www.barcelonadesign.ru





5 NIKKO HINGES

Set amidst the NIKKO mountains and surrounded by towering Japanese cedars, you find the temple of TSOGHU. It is noted for its beautiful back-lacquered front doors and precious wrought bronze hinges.



BARCELONA
DESIGN

Продажа дизайнерской мебели,
света и аксессуаров
по всей России

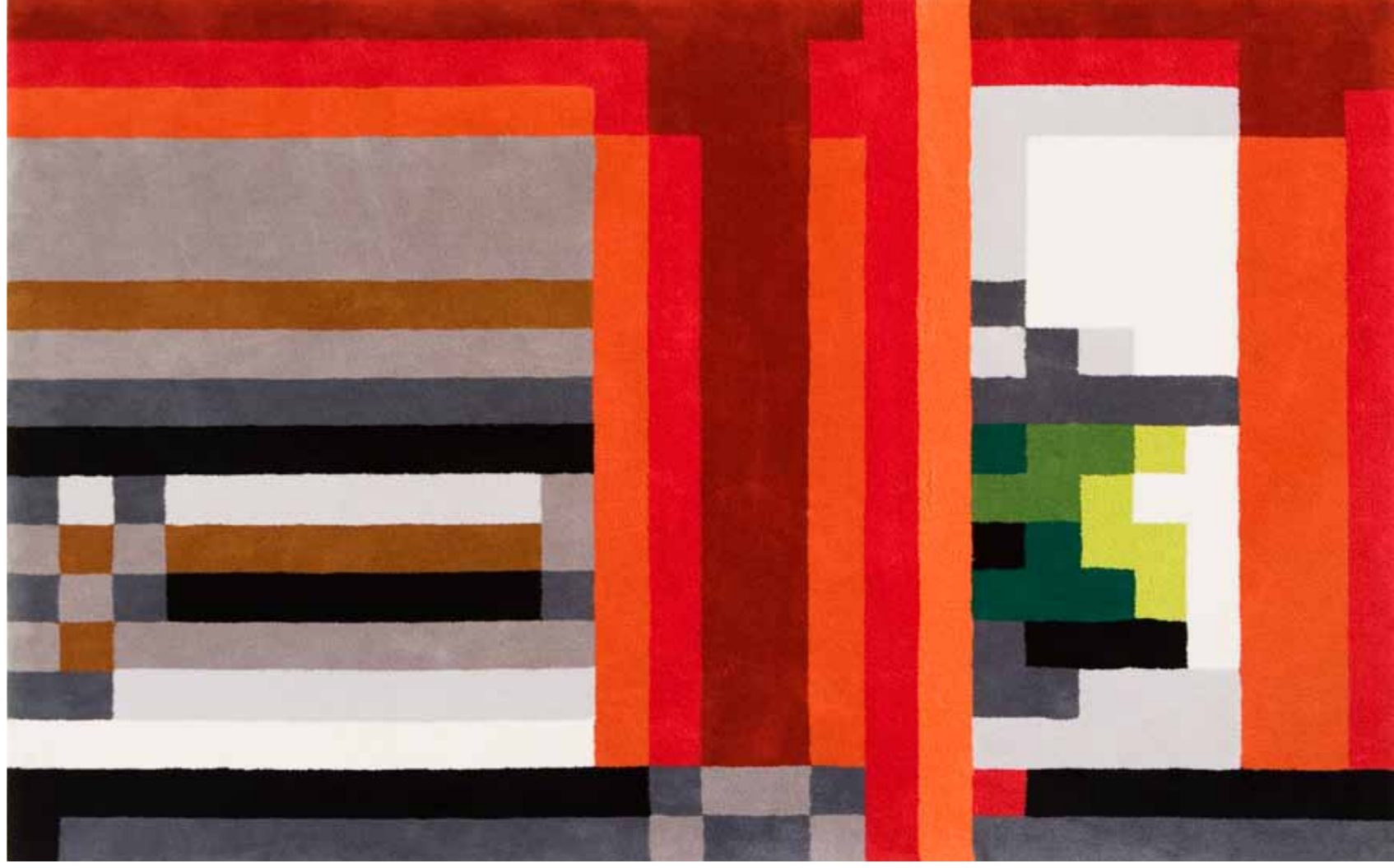
8 (800) 500-70-36
hello@barcelonadesign.ru
www.barcelonadesign.ru



6 KYOTO

PALACE

Destroyed six times by fire, it was last rebuilt in 1855. Being home to the Imperial throne it is considered the capital of Japan. With its majestic pine trees and overlooking the imperial park of 650,000 square metres KYOTO GYOEN is a large oasis in the heart of Kyoto city.





7 KYOTO RESTAURANT

PONTOCHO. Neighbourhood of narrow streets crowded with restaurants where GEISHAS entertain and serve prestigious clients. The houses of this neighbourhood have lovely front doors characterized by their simplicity and colourful paper lamps.





8 SHINKANSEN

From HAKONE to TOKYO, after visiting MOUNT FUJI - in a moment the SHINKANSEN also known as the BULLET TRAIN will take us to our destination. You can set your clock by this sleek high speed train which travels at up to 350 km/h.

350
350



BARCELONA
DESIGN

Продажа дизайнерской мебели,
света и аксессуаров
по всей России

8 (800) 500-70-36
hello@barcelonadesign.ru
www.barcelonadesign.ru



9 G E I S H A

In KYOTO they are known as GEYKO (DAUGHTERS OF ART). The knowledge of traditional arts, verbal acuity, and ability to keep a secret are among the qualities by which these women gain respect and admiration. Particularly noteworthy are their white make up, exquisite dresses, impeccable manners, and beautiful fans.





10 MIYAHIMA TORI

Set like a jewel in the coast of SANYO the imposing door of TORI guards the Shinto shrine ITSUKUSIMA. This sacred island where you cannot be born, die, or cut down a tree, is covered by virgin forest. A beautiful place where birds, monkeys and deer move freely.



BARCELONA
DESIGN

Продажа дизайнерской мебели,
света и аксессуаров
по всей России

8 (800) 500-70-36
hello@barcelonadesign.ru
www.barcelonadesign.ru



11 MIYAHIMA TORI GIS

Set like a jewel in the coast of SANYO the imposing door of TORI guards the Shinto shrine ITSUKUSIMA. This sacred island where you cannot be born, die, or cut down a tree, is covered by virgin forest. A beautiful place where birds, monkeys and deer move freely.





12 HOKKAIDO

The beautiful valley of FURANO, surrounded by active volcanoes, is the geographical centre of HOKKAIDO, Japan's largest island. A place of natural hot springs, spas, ski slopes, flower fields, colours and shapes filling hundreds of hectares. A beautiful place for travellers to stop and rest.





13 KIMONO

This garment called UCHIKAKE is made by red silk embroidered with colorful fans. It is distinguished by its padded at the end of the tail. The KIMONO is the traditional dress of Japan, made from silk robes, intricate embroidery, and precious materials.

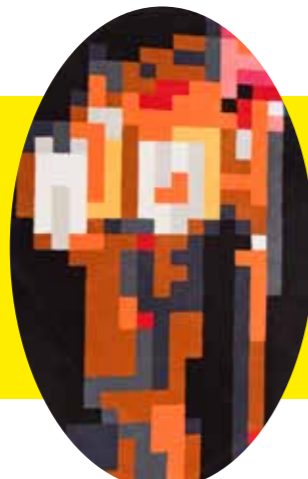


BARCELONA
DESIGN

Продажа дизайнерской мебели,
света и аксессуаров
по всей России

8 (800) 500-70-36
hello@barcelonadesign.ru
www.barcelonadesign.ru





JAPAN COLLECTION 2010
FROM TOKIO TO HOKKAIDO
DESIGNED BY ENRIQUE EGUINO

JAPAN CIRCLE

3.00 diameter
2.50 diameter

JAPAN RECTANGULAR

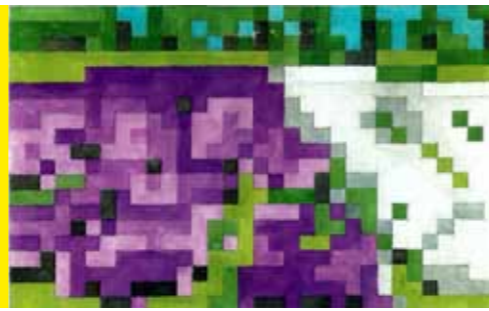
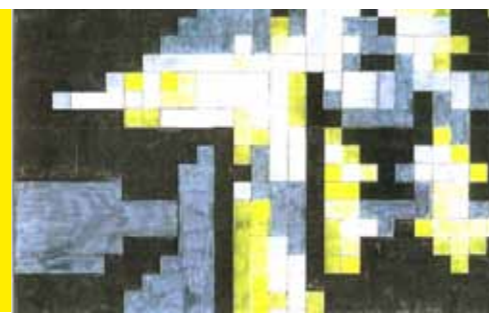
1.80 X 2.60
2.00 X 3.20
2.50 X 3.00
2.50 X 3.50
3.00 X 4.00

JAPAN SQUARE

3.00 X 3.00

JAPAN OVAL

1.80 X 2.60
2.00 X 3.20
2.50 X 3.00
2.50 X 3.50
3.00 X 4.00



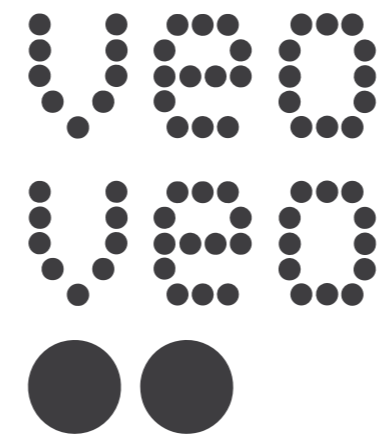
TECHNICAL SHEET

	JAPAN WOOL	JAPAN SILK
Manufacture:	Manual. (Handtufting sistem)	Manual. (Handtufting sistem)
Composition:	100 % Pure Wool 2, 3/2 - Woolmark 239 PO 68 W	100 % Tencel
Backing 1°:	100 % Polyester	100 % Polyester
Backing 2°/ 3°:	100 % Natural non-skid jute	
File weight gr. m/2:	4.000 gr./m ²	3.500 gr./m ²
Total weight gr.m/2:	5.200 gr./m ²	5.200 gr./m ²
File high mm:	14 m/m	14 m/m
Total high:	17 m/m	16 m/m
Density:	188.000 knots / m ²	
Latex:	Budiatex (Europe)	Luxury Contrac Latex
Made in:	UE	UE



Продажа дизайнерской мебели,
света и аксессуаров
по всей России

8 (800) 500-70-36
hello@barcelonadesign.ru
www.barcelonadesign.ru



BARCELONA
DESIGN



Продажа дизайнерской мебели,
света и аксессуаров
по всей России

8 (800) 500-70-36
hello@barcelonadesign.ru
www.barcelonadesign.ru



Alfombras veo veo

Plaza Doctor Mas Candela,9
03330 CREVILLENT (Alicante)
Spain

T +34 96 668 12 50

F +34 96 540 54 11

www.alfombrasveoveo.es
info@alfombrasveoveo.es