

Walraven VibraTek® MS-2X Spring Mount

High performance spring isolator for heavy equipment

Walraven VibraTek® MS-2X

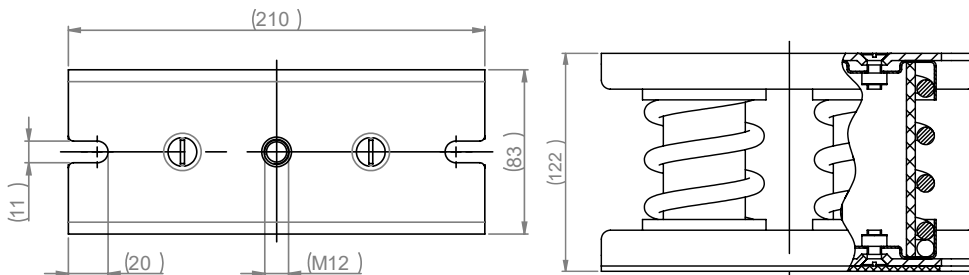
Features and benefits



- Recommended for equipment with low working speeds of 600 RPM or above
- Flexible internal filler prevents debris and solid elements entering and damaging the spring under load
- Ribs in the metal base provide increased stiffness
- Slot holes facilitate positioning and anchoring to the base material
- Epoxy powder-coated base, caps and springs provide resistance to corrosion

Technical Drawing

Applications



- Compressors, fans, pumps, chillers, air handling units or other heavy equipment

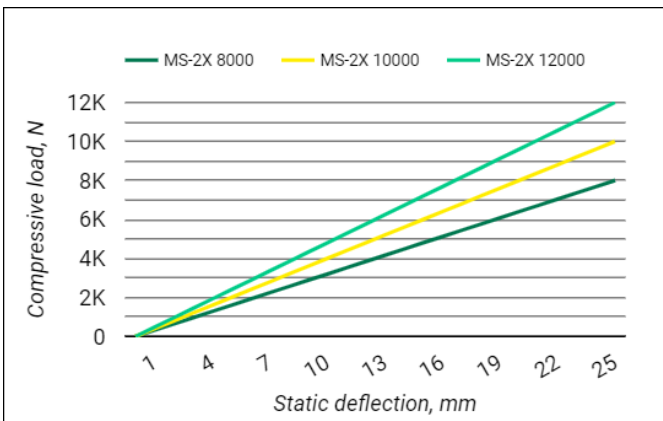
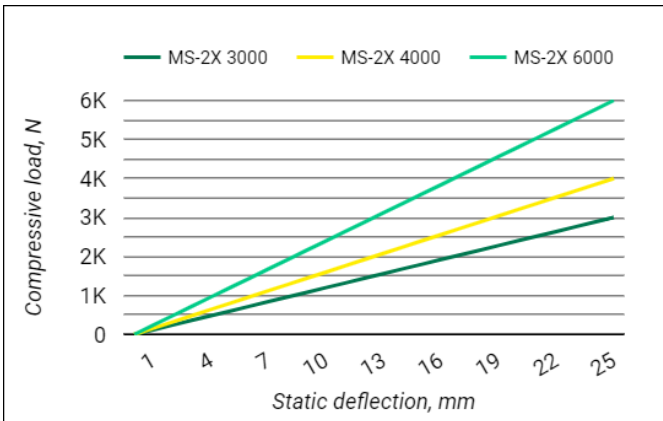
1. Product and packaging details

Article	Description	Dimension	Piece		Pack 1	
			[pcs]	EAN13	[pcs]	EAN13
2802003000	MS-2X Spring Mount	3000/M12	1	8719942054935	5	8719942054942
2802004000	MS-2X Spring Mount	4000/M12	1	8719942054966	5	8719942054973
2802006000	MS-2X Spring Mount	6000/M12	1	8719942054997	5	8719942055000
2802008000	MS-2X Spring Mount	8000/M12	1	8719942055024	5	8719942055031
2802010000	MS-2X Spring Mount	10000/M12	1	8719942055055	5	8719942055062
2802012000	MS-2X Spring Mount	12000/M12	1	8719942055086	5	8719942055093

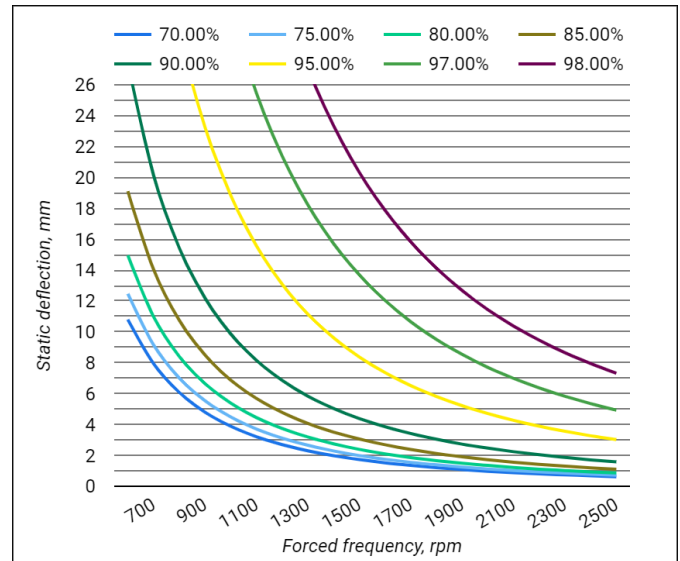
2. Performance data

Article	Description	Dimension	Max. Deflection	Min. load	Max. load	Min. optimal load	Max. optimal load
			[mm]	[N]	[N]	[N]	[N]
2802003000	MS-2X Spring Mount	3000/M12	25mm	300	3000	600	2760
2802004000	MS-2X Spring Mount	4000/M12	25mm	400	4000	800	3680
2802006000	MS-2X Spring Mount	6000/M12	25mm	600	6000	1200	5520
2802008000	MS-2X Spring Mount	8000/M12	25mm	800	8000	1600	7360
2802010000	MS-2X Spring Mount	10000/M12	25mm	1000	10000	2000	9200
2802012000	MS-2X Spring Mount	12000/M12	25mm	1200	12000	2400	11040

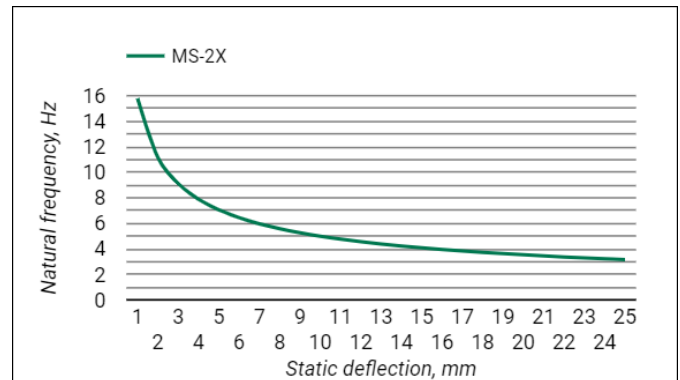
2.1 Static deflection



2.2 Isolation efficiency



2.3 Natural frequency



3. Dynamic properties

Description	Value
Damping factor	0.001
Average ratio $K_x / K_z = K_y / K_z$	≈ 0.7
Maximum transient overload % on maximum load	30 %
Working temperature	-90° C to +200 °C