

indoor

Nautica

Swing chair with base / columpio con base

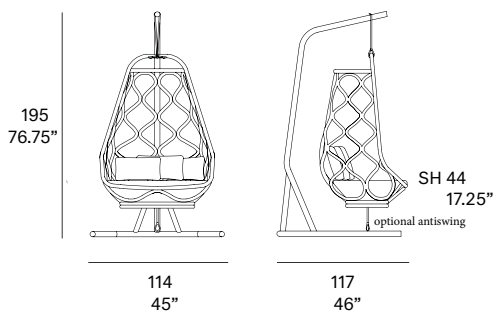
MUT Design, 2012

T061



Swing chair with base with structure made of peeled and tinted natural rattan 34 mm/1.33" in diameter. Backrest manufactured in peeled and tinted natural rattan 24 mm/0.94" in diameter. Finished with a three step coating (dye, base coat and top coat) highly resistant to solar radiation thanks to UV filters. Cushion upholstered in natural or faux leather, virgin wool fabrics, velvet and polypropylene. Braided polyester rope with 14 mm/0.55" in diameter is provided to hang the swing chair. Optional anti-swing (braided polyester rope + carabiner). Base manufactured in aluminum tube with 45 mm/1.77" of section. Adjustable plastic caps.

Columpio con base con estructura en rattan natural pelado y tintado de 34 mm de calibre. Respaldo fabricado en rattan natural pelado y tintado de 24 mm de calibre. Acabado con recubrimiento en tres fases (tinte, fondo y acabado) con filtros UV que lo hacen altamente resistente a la radiación solar. Cojines tapizados en piel natural o sintética, tejidos de lana virgen, terciopelo y polipropileno. Cuerda de poliéster de 14 mm de sección suministrada para colgar el columpio de la base. Anti-swing opcional (cuerda de poliéster + mosquetón). Base fabricada en tubo de aluminio de 45 mm de sección. Tacos reguladores de plástico.



Shipment details

Qty	1 swing chair + 1 base (1 box)
Volume	2,6 m3 / 91.8 ft3
Gross weight	56 kg / 123 lb
Net weight	40 kg / 88 lb
Item dimensions (width x depth x height)	117 x 114 x 195 cm 37.5" x 30" x 51.5"
COM	1,80 + 1,5 m / 1.90 yd + 1.60 yd (1, 40 - 1,50 m / 54"-59")

Awards



reddot award 2014
winner

expormim

Expormim S.A.
Pol. Ind. Jaime I
46640 Mogente (Valencia) Spain
+34 962 295 144/5
export@expormim.com
www.expormim.com

Expormim USA LLC
(212) 204-8572
usa@expormim.com
www.expormim.com

1/5

Rattan



R01 Naturale



R03 Noce



R05 Grigio



R07 Mogano



R08 Azzurro



R06 Verde oliva



R14 Japanese red



R16 Navy blue



R17 Forest green



R02 Bianco



R09 Nero

Base / base

metallic finishes / metales



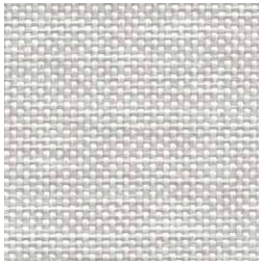
601 FT black



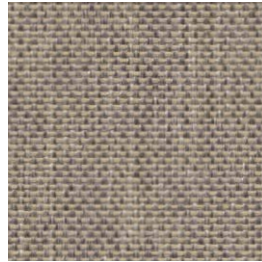
602 FT bianco

Cushions / confección

group 1 - dolce Crevin®



dolce 07



dolce 05



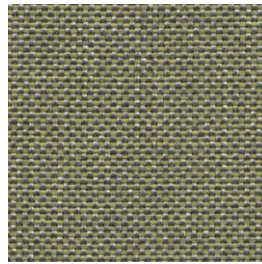
dolce 53



dolce 47



dolce 24

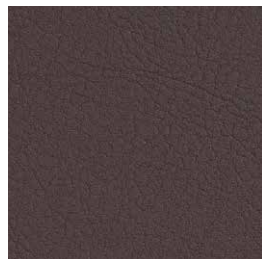


dolce 30

group 1 - valencia™ faux leather



valencia 1049



valencia 0020



valencia 9035

Cushions / confección

group 2 - remix 2 Kvadrat®



remix 113

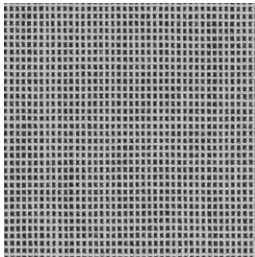


remix 233

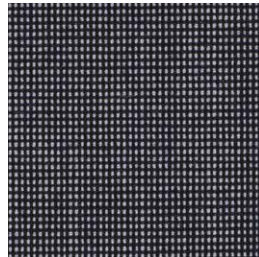


remix 393

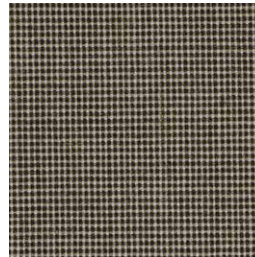
group 2 - umami Kvadrat®



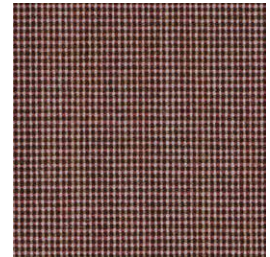
umami 111



umami 191

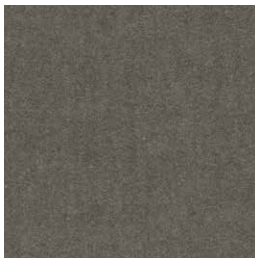


umami 251



umami 441

group 2 - harald 3 Kvadrat® / Raf Simons



harald 242



harald 283



harald 582



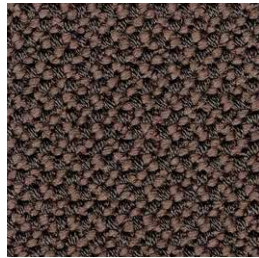
harald 982

Cushions / confección

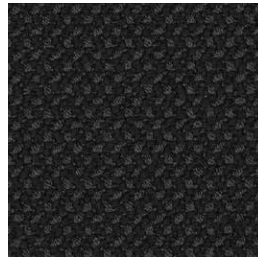
group 2 - credo Rohi®



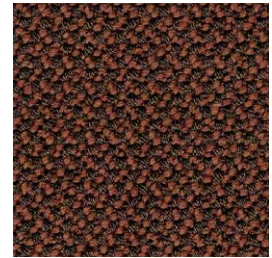
credo jasmin



credo walnut



credo black



credo kupfer



credo heart



credo pistazie

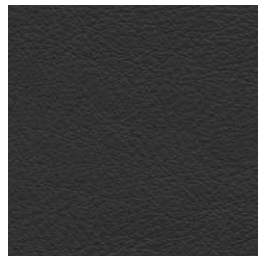
group 3 - elmosoft Elmo® leather



elmosoft 02020



elmosoft 93129



elmosoft 99999