



# LUANA

product code	C489L05
product description	LUANA Chair wood natural white Chair with seat and backrest in lacquered MDF. Solid oak legs.

<b>product sizes</b>	
height x width x depth (cm)	80 x 49 x 55
product weight (Kg)	5,3
seat height (cm)	45
seat depth (cm)	42
armrest height (cm)	

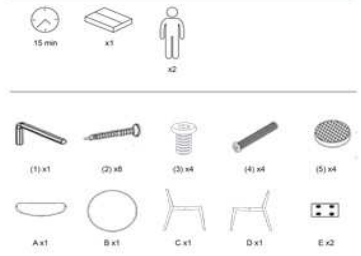
technical drawings



<b>product features</b>	
use (domestic/office)	Domestic
appliance (inner/outer)	Inner
stackable (yes/no)	No
adjustable height (yes/no)	No
foldable (yes/no)	No
swivel (yes/no)	No
max. load (Kg)	130

seat material	MDF
seat finishing	Matt lacquered
seat density foam (kg/m3)	
seat detachable (yes/no)	No
seat grammage (g/m2)	

backrest material	MDF
backrest finishing	Matt lacquered
backrest density foam (kg/m3)	
backrest detachable (yes/no)	No
backrest grammage (g/m2)	
legs material	Oak wood (Quercus alba)
legs finishing	Oil protection
feet protection (yes/no)	No
adjustable feet (yes/no)	No
armrest (yes/no)	No
armrest material	
armrest finishing	
armrest density foam (kg/m3)	
armrest detachable (yes/no)	No
armrest grammage (g/m2)	
RAL Specifications	RAL EFFECT (E2): RAL 120-2 // RAL CLASSIC (K5): RAL 9003
castors information	
footrest included	No
size and shape variation (yes/no)	No
color variation (yes/no)	No
other details	
general warnings	Do not place near direct sources of heat. Keep away from direct solar light. Do not use abrasive products like acetones, bleaches, solvents, etc.
specific use and care instructions	Clean with a damp cloth and dry immediately
years of guarantee	2
made according to	Manufactured according to EN-12520:2015 for household use seats.
good to know	Wood origin country: USA
<b>assembly</b>	
assembly required (yes/no)	Yes
difficulty of assembly (hard/medium/easy)	Easy
assembly time (min)	15
people required	2
assembly suggestions	



4

C489

C489

3

**packaging**

units per lot	2
cbm (m3) / gross weight (Kg)	0,044 / 6
nº of boxes	1

box 1	1
description	LUANA Chair wood natural white
description box	FULL ITEM
height x width x depth (cm)	16 x 80 x 69
cbm (m3) / gross weight (Kg) / net weight (Kg)	0,044 / 6 / 5,3

box 2	
description	
description box	
height x width x depth (cm)	x x
cbm (m3) / gross weight (Kg) / net weight (Kg)	/ /