

CLASSIC

Studio expormim

Banqueta “Sudán” / footstool

C306

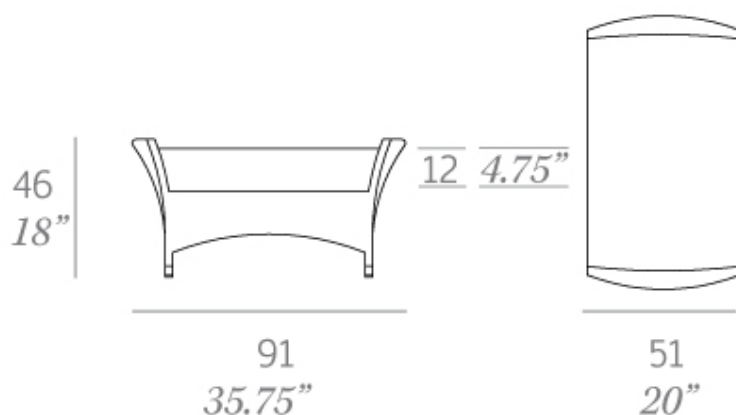
OUT



Colección fabricada en tubo de aluminio de alta resistencia y tejida a mano artesanalmente con fibra sintética redonda (2 mm de sección) de polietileno de alta densidad (HDPE). Las mesas de comedor C308 y C309, y las de centro se sirven con un sobre de cristal de 8 mm de espesor. La mesa cuadrada C319 se sirve con un sobre oculto de Policarbonato (PC) para garantizar una mayor solidez en la tapa.

Collection made of high resistance aluminium tube and hand-woven synthetic round fibre (2 mm width) of high density polyethylene (HDPE). The dining room tables C308 and C309, and the coffee tables have a glass top (8 mm thick). The square table C319 has an internal layer of Polycarbonate (PC) to guarantee a major solidity.

Medidas / Dimensions	91 x 51 x 46 cm 35.75" x 20" x 18"
Peso / Weight	5 kg / 11.0 lb
Volumen / Volume	0,22 m ³ / 7.77 ft ³



HDPE - Fibras sintéticas / synthetic fibres



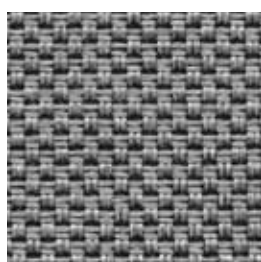
083 tobacco

Serie 2 - Confección / cushions

Duo Outdoor



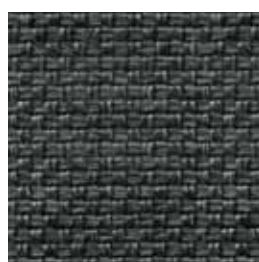
Duo 54



Duo 51



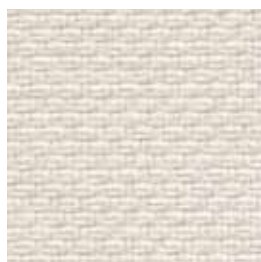
Duo 14



Duo 53



Duo 55



Duo 01

Serie 1 - Confección / cushions

Tempotest®



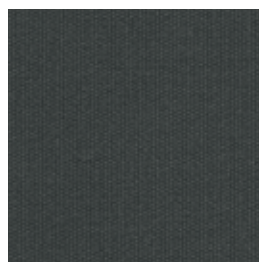
Marine C



Marine BG



Marine GC



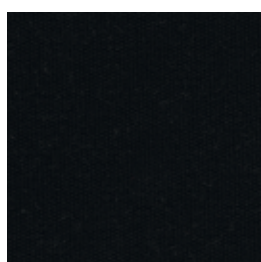
Marine G



Marine GN



Marine M



Marine NE



Marine MO



Marine A



Marine VN

Serie 2 - Confección / cushions

Tempotest®



Marivent 23



Marivent 40



Marivent 42



Marivent 44



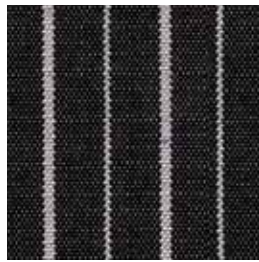
Marivent 24



Marivent 41



Marivent 43



Marivent 45