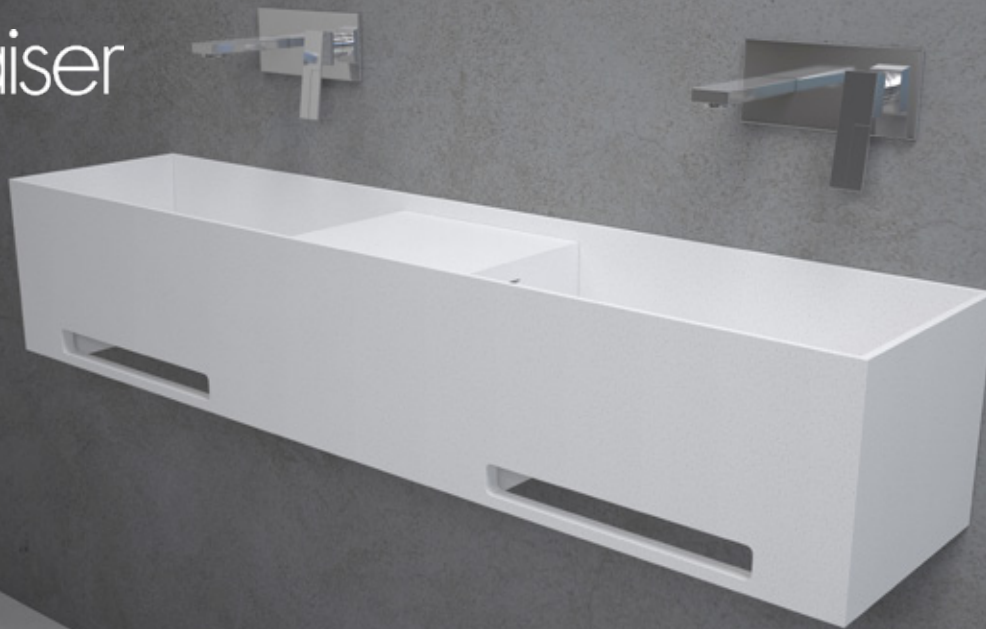


apaiser



GEOMETRICS

Soka double vanity

1800mm

Wall mounted to allow flexibility and functional ease, the Soka Vanity features a versatile tray, able to be configured either to left or right on the single basin option and proudly centred on the double basin variation. With a deliberately simple cut-out towel rail, the vanity adds the final touch of minimalism and functionality to adorn any bathroom.

SPECIFICATIONS

1800mm x 400mm x 350mm

Approx weight: 115kg (253lb)

Overflow option available.

Chrome or stone waste included.

Note: Brackets not included. Please check with your apaizer sales representative to confirm suitability for wall hanging this product.



Product code **6277**

apaizerMARBLE

apaizerMARBLE® is a luxurious, performative, non-porous marble material, derived from reclaimed marble, enriched with the purity of Australian minerals. Offering enhanced performance, achieved through the integration of the most advanced materials, apaizerMARBLE is shaped and perfected by our master craftsmen.

We at apaizer are committed to manufacturing bathware, which is respectful of the environment. In all phases of our process, we strive to produce a product with consistently low environmental impact.

apaizerCARE

A dedicated support platform comprising apaizer's in-house design and engineering professionals, provides superior service quality and peace of mind to all our project customers and retail installations. apaizerCARE® oversees design to delivery, installation and training.

