

ADVANCED

Studio expormim

## Sillón "Tunis" / armchair

C501

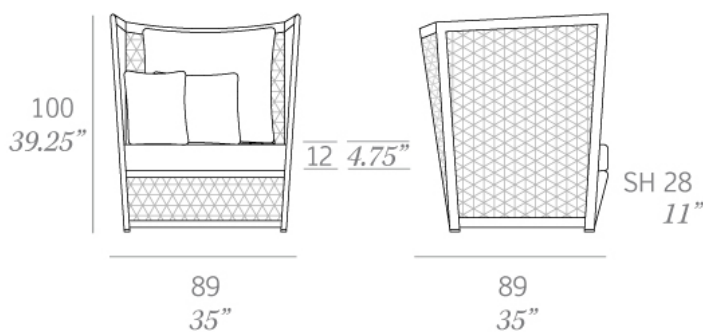
*OUT*



Colección fabricada en tubo de aluminio de alta resistencia y tejida a mano artesanalmente con fibra sintética plana (anchura 6/8,5 mm) de polietileno de alta densidad (HDPE). Las mesas de comedor se sirven con un sobre de cristal de 8 mm de espesor. Posibilidad de realizar una gran variedad de composiciones de asientos debido a la modularidad de sus elementos.

Collection made of high resistance aluminum tube and hand-woven flat synthetic fiber made of high density polyethylene (HDPE), 6-8,5 mm/0.24-0.33" wide. The dining tables include a glass top 8 mm/0.31" thick. Possibility of creating a wide variety of layouts due to the modularity of its elements.

Medidas / Dimensions	89 x 89 x 100 cm 35" x 35" x 39.25"
Peso / Weight	10 kg / 22 lb
Volumen / Volume	0,79 m <sup>3</sup> / 27.9 ft <sup>3</sup>



**HDPE - Fibras sintéticas / synthetic fibres**



023 metallic brown



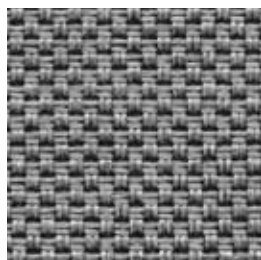
028 white

**Serie 2 - Confección / cushions**

Duo Outdoor



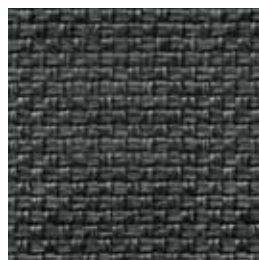
Duo 54



Duo 51



Duo 14



Duo 53



Duo 55



Duo 01

**Serie 4 - Confección / cushions**

Silvertex™



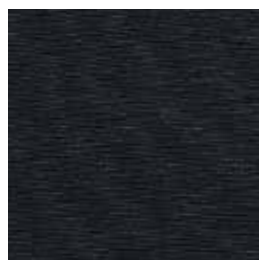
Silvertex Ice



Silvertex Taupe



Silvertex Meteor



Silvertex Carbon

Zander®



Zander Pure White



Zander Auster

**Serie 1 - Confección / cushions**

Tempotest®



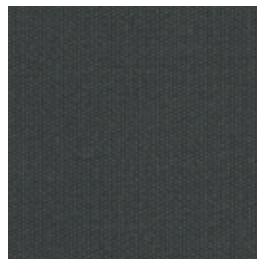
Marine C



Marine BG



Marine GC



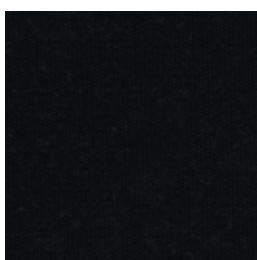
Marine G



Marine GN



Marine M



Marine NE



Marine MO



Marine A



Marine VN

**Serie 2 - Confección / cushions**

Tempotest®



Marivent 23



Marivent 40



Marivent 42



Marivent 44



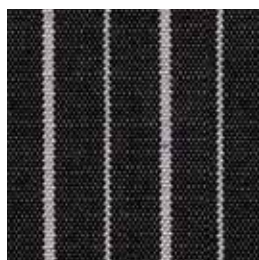
Marivent 24



Marivent 41



Marivent 43



Marivent 45