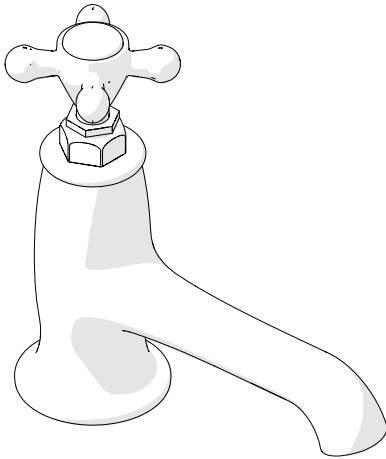


HIGHGATE

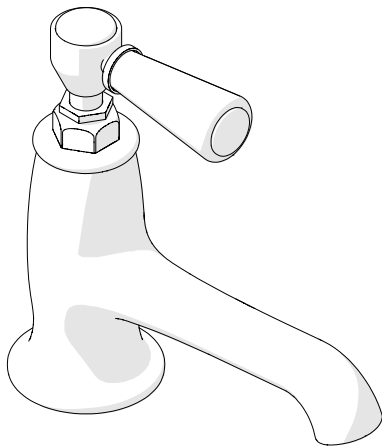
Low Profile One Hole Deck Mounted Lavatory Faucet

INSTALLATION GUIDELINES

Metal Cross Handle
Style No. HGLS40



White Porcelain Lever Handle
Style No. HGLS50



SPECIFICATIONS:

Drain Hole Diameter: 1-3/4"
Drain Style: Lift-Turn (Drain Included)
Fitting Hole Diameter: 1-3/8"
Inlet Connection Size: 1/2"
Inlet Connection Type: Straight Female Threads
Maximum Deck Thickness: 1-1/4"
Minimum Deck Thickness: 3/8"
Maximum Water Pressure: 80psi
Minimum Water Pressure: 20psi
Recommended Water Pressure: 45psi
Restricted Maximum Flow Rate: 1.2gpm

IMPORTANT:

- To ensure this product is installed properly, you must read and follow these guidelines.
- The owner/user of this product must keep this information for future reference.
- Be sure your installation conforms to federal state, and local codes. In the State of Massachusetts, all installations must comply with the rules and regulations set forth within 248 CMR.
- This product must be installed by a professional licensed contractor.
- Refer to the specifications and assembly drawings attached. Product is sold partially assembled but shown fully disassembled for illustrative and service purposes only.
- Inspect this product to ensure you have all the parts required for proper installation.
- Use only a strap wrench or protected/smooth-jaw wrench on any finished surface.
- DO NOT use putty on deck fittings. Upper and lower washers are provided.

SPOUT INSTALLATION:

- The maximum deck thickness is 1-1/4", a slab thicker than 1-1/4" will require the underside to be routed accordingly.
1. Remove the rubber washer (10), metal washer (11), and nut (12) from the spout threaded shank (9).
 2. With the washer (4), place the spout (3), threaded shank (9), and flexible supply hoses (16) through the hole on the mounting surface.
 3. From under the mounting surface, place the rubber washer (10) and metal washer (11) back onto the threaded shank, then thread the nut (12) and tighten to secure the spout.

DRAIN INSTALLATION:

4. Remove the tailpiece (22) and mounting hardware (18-21) from the drain body (17).
5. Set the drain body (17) in the lavatory drain opening using putty or a clear adhesive silicone depending on the mounting surface material*.
6. Re-install the mounting hardware (19-21) until fully secured. You can discard the upper drain gasket (18). Putty or clear adhesive silicone may be used to ensure a water-tight seal between the lower drain gasket (19) and lavatory*.

These guidelines have been prepared for the professional contractor to aid in the installation of:
HIGHGATE LOW PROFILE ONE HOLE LAVATORY FAUCET WITH METAL CROSS HANDLE (STYLE# HGLS40) & WHITE PORCELAIN LEVER HANDLE (STYLE # HGLS50)
All dimensions are based on original specification and are subject to change and variation.
Please consult your Design Associate for current specifications.

WATERWORKS
STUDIO

HIGHGATE

Low Profile One Hole Deck Mounted Lavatory Faucet

INSTALLATION GUIDELINES

7. Re-thread the tailpiece (22) to the drain flange.

FINISH THE INSTALLATION:

- 8. Attach the hose adapters (14) to the supply valves (SOLD SEPARATELY), with the o-ring (13).
- 9. Connect the supply hoses (16) to the hose adapters, with the strainer washers (15) in the nut of the flexible hose.
- 10. Carefully open the hot and cold valves to flush out any debris in the supply lines. Let the water run for a few minutes, then shut the supply valves off and remove flexible supply hoses from hose adapter (14) to access the strainer washers (15). Clean the strainer washers of any debris and repeat Step 9.

INSPECT THE INSTALLATION:

- 11. Inspect all connections for leaks.
- 12. Close the drain and fill the sink with water to make sure the drain stopper assembly operates and seals properly.
- 13. The flow restrictor (5) is located in within the spout body (3) and is accessible by removing the flow restrictor cap (8) and flow restrictor housing (6).

➤ **If further assistance is required, please contact Product Support at 1-800-927-2120 (9am-6pm EST).**

* Putty contains oils and can cause permanent discoloration on certain materials such as marble, granite and any porous surface.

BILL OF MATERIALS:

		Description	QTY
HGLS40 (Metal Cross Handle)	1	Metal Cross Handle	1
HGLS50 (Porcelain Lever Handle)	2	Porcelain Lever Handle	1
COMMON PARTS	3	Spout Assembly	1
	4	Rubber Washer	1
	5	Flow Restrictor	1
	6	Flow Restrictor Housing	1
	7	O-Ring	1
	8	Flow Restrictor Cap	1
	9	Threaded Shank	1
	10	Rubber Washer	1
	11	Metal Washer	1
	12	Nut	1
	13	O-Ring	2
	14	Hose Adapter	2
	15	Strainer Washer	2
	16	Flexible Supply Hose	2
	17	Drain Body with Lift Turn Knob	1
	18	Upper Drain Gasket	1
19	Lower Drain Gasket	1	
20	Paper Washer	1	
21	Drain Nut	1	
22	Tailpiece	1	

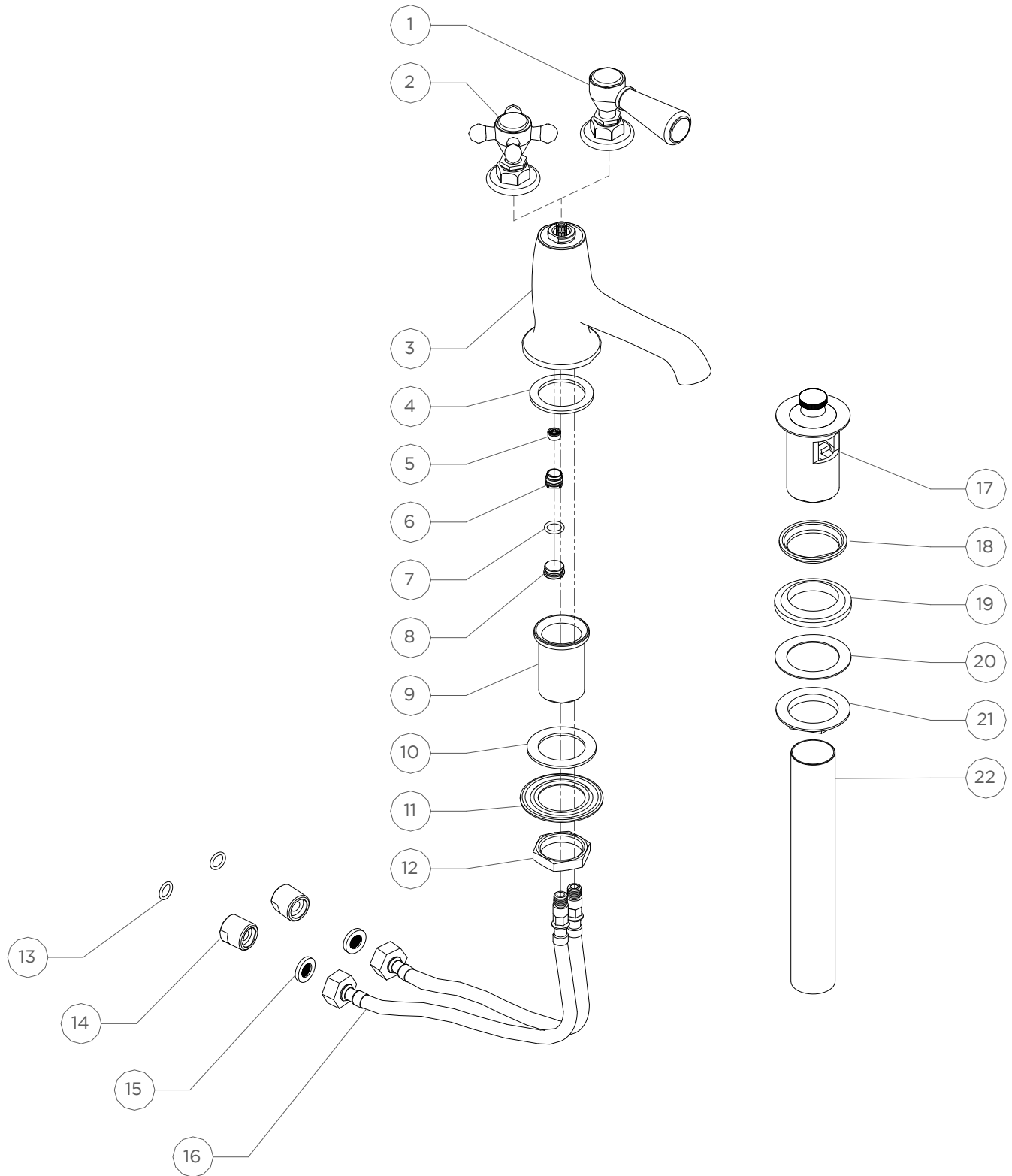
These guidelines have been prepared for the professional contractor to aid in the installation of:
HIGHGATE LOW PROFILE ONE HOLE LAVATORY FAUCET WITH METAL CROSS HANDLE (STYLE# HGLS40) & WHITE PORCELAIN LEVER HANDLE (STYLE # HGLS50)
 All dimensions are based on original specification and are subject to change and variation.
 Please consult your Design Associate for current specifications.

**WATERWORKS
STUDIO**

HIGHGATE

Low Profile One Hole Deck Mounted Lavatory Faucet

INSTALLATION GUIDELINES



These guidelines have been prepared for the professional contractor to aid in the installation of:
HIGHGATE LOW PROFILE ONE HOLE LAVATORY FAUCET WITH METAL CROSS HANDLE (STYLE# HGLS40) & WHITE PORCELAIN LEVER HANDLE (STYLE # HGLS50)
All dimensions are based on original specification and are subject to change and variation.
Please consult your Design Associate for current specifications.

WATERWORKS
STUDIO