

ADVANCED

Studio expormim

Tumbona "Tunis" / chaise longue

C511

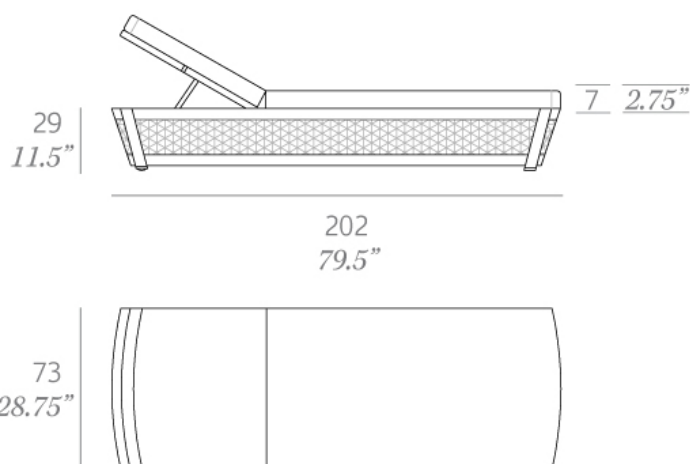
OUT



Colección fabricada en tubo de aluminio de alta resistencia y tejida a mano artesanalmente con fibra sintética plana (anchura 6/8,5 mm) de polietileno de alta densidad (HDPE). Las mesas de comedor se sirven con un sobre de cristal de 8 mm de espesor. Posibilidad de realizar una gran variedad de composiciones de asientos debido a la modularidad de sus elementos.

Collection made of high resistance aluminum tube and hand-woven flat synthetic fiber made of high density polyethylene (HDPE), 6-8,5 mm/0.24-0.33" wide. The dining tables include a glass top 8 mm/0.31" thick. Possibility of creating a wide variety of layouts due to the modularity of its elements.

Medidas / Dimensions	73 x 202 x 29 cm 28,75" x 79,5" x 11,5"
Peso / Weight	10 kg / 22.0 lb
Volumen / Volume	0,43 m ³ / 15.19 ft ³



HDPE - Fibras sintéticas / synthetic fibres



023 metallic brown



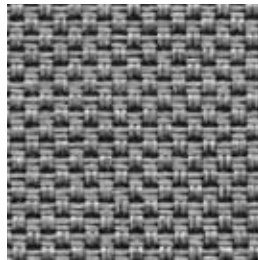
028 white

Serie 2 - Confección / cushions

Duo Outdoor



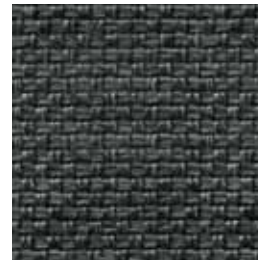
Duo 54



Duo 51



Duo 14



Duo 53



Duo 55



Duo 01

Serie 4 - Confección / cushions

Silvertex™



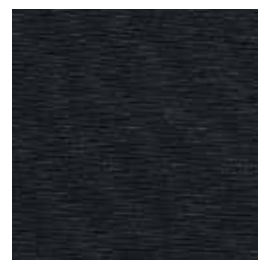
Silvertex Ice



Silvertex Taupe



Silvertex Meteor



Silvertex Carbon

Zander®



Zander Pure White



Zander Auster

Serie 1 - Confección / cushions

Tempotest®



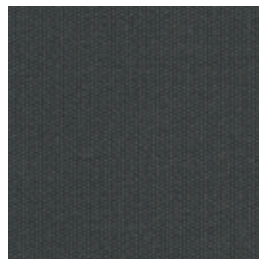
Marine C



Marine BG



Marine GC



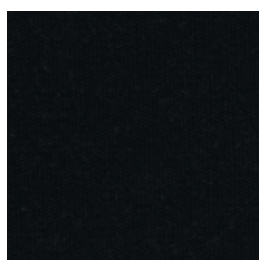
Marine G



Marine GN



Marine M



Marine NE



Marine MO



Marine A



Marine VN

Serie 2 - Confección / cushions

Tempotest®



Marivent 23



Marivent 40



Marivent 42



Marivent 44



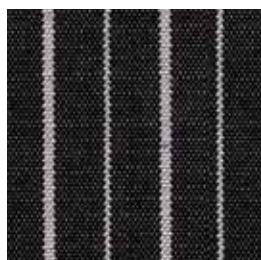
Marivent 24



Marivent 41



Marivent 43



Marivent 45