

Elemento in evoluzione del concetto cornice che racchiude la funzionalità di uno scaldasalviette leggero e raffinato. Estetica come traduzione progettuale e protagonista. Elementi che si intersecano, linee che si fondono per dare forma ad un radiatore elegante, discreto e con una personalità decisa, non solo un vero e proprio elemento d'arredo. Disponibile in 4 altezze e 3 larghezze.



Like, altezza 1564 mm, larghezza 532 mm, Bruno Tabacco

Caratteristiche costruttive

radiatore scaldasalviette in acciaio con elementi orizzontali a tubi di diametro 12 mm

collettori laterali curvati a sezione semiovale 40x23 mm

filettature estremità collettore e attacchi centrali (50 mm), primo

tubo inferiore 1/2" Gas destra

pressione di esercizio massima ammessa 4 bar

temperatura di esercizio massima ammessa 95°C

Le caratteristiche costruttive del prodotto Like, uniche nel loro genere, non lo rendono compatibile con l'allacciamento monotubo.

Dotazione di serie

4 attacchi per fissaggio a muro regolabili in tinta con il radiatore

valvola sfiato

Plus



Dati tecnici

Modello	Profondità (mm)	Altezza (mm)	Larghezza (mm)	Interasse (mm)	Peso (kg)	Capacità (lt)	$\Delta t=50^{\circ}\text{C}$ (kcal/h)	$\Delta t=50^{\circ}\text{C}$ (Watt)	$\Delta t=40^{\circ}\text{C}$ (Watt)	$\Delta t=30^{\circ}\text{C}$ (Watt)	$\Delta t=20^{\circ}\text{C}$ (Watt)	Esponente
01												
882 31 tubi 1 intervallo	35,0	882	482	406	6,90	2,80	374,0	435,0	329,0	229,0	138,0	1,254
882 31 tubi 1 intervallo	35,0	882	532	456	7,50	3,00	415,0	482,0	365,0	255,0	154,0	1,245
882 31 tubi 1 intervallo	35,0	882	632	556	8,70	3,30	494,0	574,0	436,0	307,0	186,0	1,228
1300 46 tubi 2 intervalli	35,0	1300	482	406	9,80	3,80	551,0	641,0	484,0	337,0	202,0	1,260
1300 46 tubi 2 intervalli	35,0	1300	532	456	10,60	4,10	603,0	701,0	530,0	369,0	222,0	1,256
1300 46 tubi 2 intervalli	35,0	1300	632	556	12,30	4,50	706,0	821,0	622,0	434,0	262,0	1,246
1564 54 tubi 3 intervalli	35,0	1564	482	406	11,40	4,40	665,0	773,0	583,0	406,0	243,0	1,261
1564 54 tubi 3 intervalli	35,0	1564	532	456	12,40	4,70	724,0	842,0	636,0	443,0	266,0	1,257
1564 54 tubi 3 intervalli	35,0	1564	632	556	14,30	5,20	843,0	980,0	742,0	518,0	312,0	1,249
1806 65 tubi 3 intervalli	35,0	1806	482	406	13,30	5,10	739,0	859,0	648,0	451,0	270,0	1,262
1806 65 tubi 3 intervalli	35,0	1806	532	456	14,50	5,40	837,0	973,0	735,0	512,0	307,0	1,259
1806 65 tubi 3 intervalli	35,0	1806	632	556	16,80	6,00	971,0	1.129,0	854,0	595,0	358,0	1,253
05												
882 31 tubi 1 intervallo	35,0	882	482	50	6,90	2,80	374,0	435,0	329,0	229,0	138,0	1,254
882 31 tubi 1 intervallo	35,0	882	532	50	7,50	3,00	415,0	482,0	365,0	255,0	154,0	1,245
882 31 tubi 1 intervallo	35,0	882	632	50	8,70	3,30	494,0	574,0	436,0	307,0	186,0	1,228

1300 46 tubi 2 intervalli	35,0	1300	482	50	9,80	3,80	551,0	641,0	484,0	337,0	202,0	1,260
1300 46 tubi 2 intervalli	35,0	1300	532	50	10,60	4,10	603,0	701,0	530,0	369,0	222,0	1,256
1300 46 tubi 2 intervalli	35,0	1300	632	50	12,30	4,50	706,0	821,0	622,0	434,0	262,0	1,246
1564 54 tubi 3 intervalli	35,0	1564	482	50	11,40	4,40	665,0	773,0	583,0	406,0	243,0	1,261
1564 54 tubi 3 intervalli	35,0	1564	532	50	12,40	4,70	724,0	842,0	636,0	443,0	266,0	1,257
1564 54 tubi 3 intervalli	35,0	1564	632	50	14,30	5,20	843,0	980,0	742,0	518,0	312,0	1,249
1806 65 tubi 3 intervalli	35,0	1806	482	50	13,30	5,10	739,0	859,0	648,0	451,0	270,0	1,262
1806 65 tubi 3 intervalli	35,0	1806	532	50	14,50	5,40	837,0	973,0	735,0	512,0	307,0	1,259
1806 65 tubi 3 intervalli	35,0	1806	632	50	16,80	6,00	971,0	1.129,0	854,0	595,0	358,0	1,253

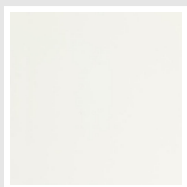
Le rese sono calcolate ed in fase di certificazione. Potenza calcolata con Δt 50°C. Per Δt diversi da 50°C utilizzare la formula: $Q=Q_n (\Delta t / 50)^n$

Dotazione di serie

- 4 attacchi per fissaggio a muro regolabili in tinta con il radiatore • valvola sfiato

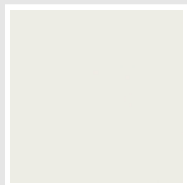
Colori e finiture

STANDARD

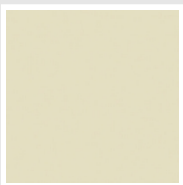


Bianco Standard
Cod. 01

CLASSIC



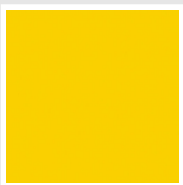
Bianco Edelweiss
Cod. 34



Avorio - RAL 1013
Cod. 02



Beige Cream
Cod. 26



Giallo - RAL 1021
Cod. 04



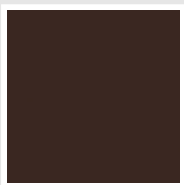
**Giallo Melone -
RAL 1028**
Cod. E7



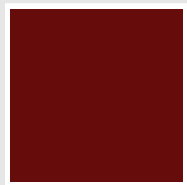
Arancio - RAL 2004
Cod. 17



**Marrone Ruggine -
RAL 8004**
Cod. E1



Marrone - RAL 8017
Cod. 09



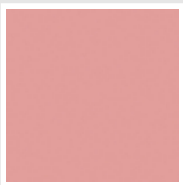
**Amaranto - RAL
3003**
Cod. 06



Rosso - RAL 3000
Cod. 05



**Rosso Fragola -
RAL 3018**
Cod. Y3



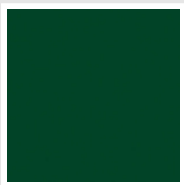
Rosa - RAL 3015
Cod. R2



**Lilla Bluastro - RAL
4005**
Cod. R3



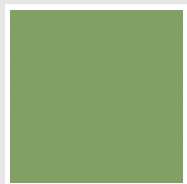
**Porpora Traffico -
RAL 4006**
Cod. R6



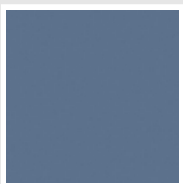
**Verde Bosco - RAL
6005**
Cod. 19



**Verde Erba - RAL
6018**
Cod. N3



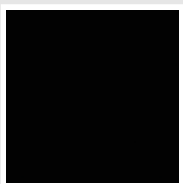
**Verde Salvia - RAL
6021**
Cod. E6



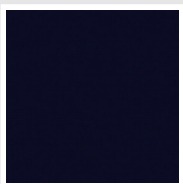
**Blu Pastello - RAL
5024**
Cod. G7



Grigio Manhattan
Cod. 03

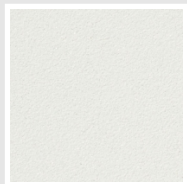


Nero - RAL 9005
Cod. 10

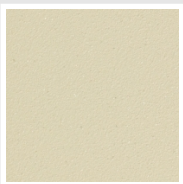


Deep Blue
Cod. 2F

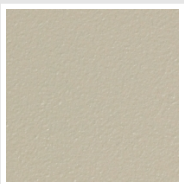
SPECIAL



Bianco Perla
Cod. 16



Quartz 1
Cod. 1C



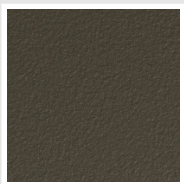
Sablé
Cod. Y4



Quartz 2
Cod. 2C



Sunstone
Cod. 2D



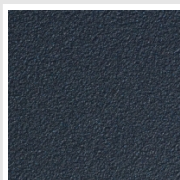
Bruno Tabacco
Cod. 1B



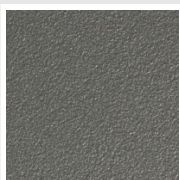
Flame Red
Cod. 7D



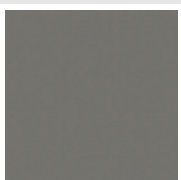
Purple Blue
Cod. 1D



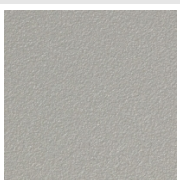
Azurite 3
Cod. 6C



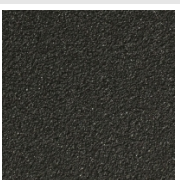
Grigio Medio
Cod. 4D



**Grigio Titanio
Metallizzato - RAL
9023**
Cod. L3



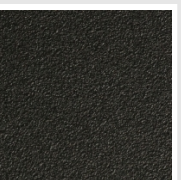
Grigio Perla
Cod. L6



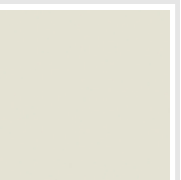
Nero Grafite
Cod. 18



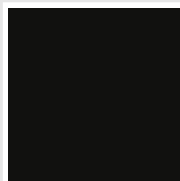
Grigio Quarzo
Cod. 31



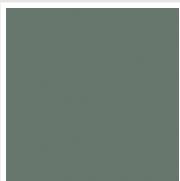
Nero Satinato
Cod. 30



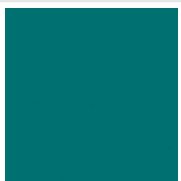
Bianco Opaco
Cod. J8



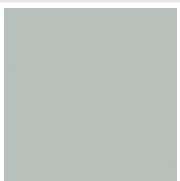
Nero Opaco
Cod. K1



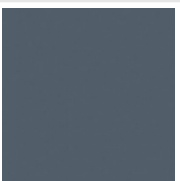
Agave
Cod. 9N



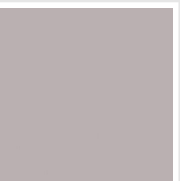
Blu Baltico
Cod. 1P



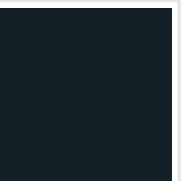
Ghiaccio
Cod. 3P



**Blu Colomba
Opaco - RAL 5014**
Cod. 4P



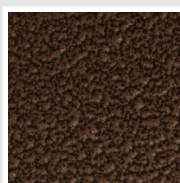
**Grigio Chiaro
Opaco**
Cod. 8N



**Grigio Cenere - Ral
7021**
Cod. G1



Grigio Martellato
Cod. 32



Rame Martellato
Cod. J4

RAL



Altri colori RAL (previa fattibilità)
Cod. ALTRIRAL

I colori rappresentati in questa cartella non sono da considerarsi impegnativi. I diversi processi tecnologici di verniciatura ed i materiali utilizzati per la realizzazione possono non avere una perfetta corrispondenza cromatica con il prodotto consegnato. L'azienda Irsap si riserva la facoltà di apportare in qualsiasi momento tutte le modifiche necessarie per il miglioramento del prodotto.