

indoor

Kiri

Round coffee table / centro redondo

Ø 60 cm / 23.5"

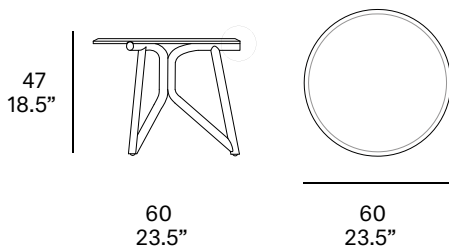
Mario Ruiz, 2015

T548



Structure made of peeled and tinted natural rattan. Finished with a three step coating (dye, base coat and top coat) highly resistant to solar radiation thanks to UV filters. Possibility to customize the tabletop by using three different finishes: lacquered, solid wood or natural stone.

Estructura en rattan natural pelado y tintado. Acabado con recubrimiento en tres fases (tinte, fondo y acabado) con filtros UV que lo hacen altamente resistente a la radiación solar. Posibilidad de personalizar la tapa mediante el empleo de tres tipos diferentes de acabado: lacado, madera maciza o piedra natural.



Shipment details

Qty	1 coffee table (1 box)
Volume	0,21 m3 / 7.4 ft3
Item dimensions (width x depth x height)	60 x 60 x 47 cm 23.5" x 23.5" x 18.5"

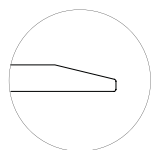
Lacquered / solid wood top option

Gross weight	9 kg / 20 lb
Net weight	6 kg / 13 lb

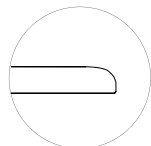
Marble top option

Gross weight	23 kg / 51 lb
Net weight	20 kg / 44 lb

Tabletop:



- Solid wood, lacquered
22 mm/0.86" thick.



- Marble 22 mm/0.86" thick.

expormim

Expormim S.A.
Pol. Ind. Jaime I
46640 Mogente (Valencia) Spain
+34 962 295 144/5
export@expormim.com
www.expormim.com

Expormim USA LLC
212 204 8572
usa@expormim.com
www.expormim.com

1/3

Rattan



R01 Naturale



R03 Noce



R05 Grigio



R07 Mogano



R08 Azzurro



R06 Verde oliva



R14 Japanese red



R16 Navy blue



R17 Forest green

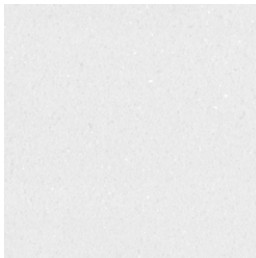


R02 Blanco

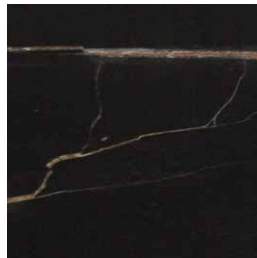


R09 Nero

marble / mármol



Macael



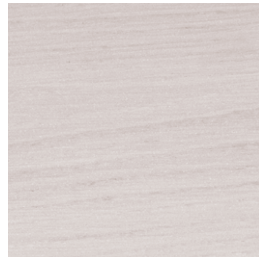
Calatorao

Top / tapa

solid wood / madera maciza



water varnished



white stained

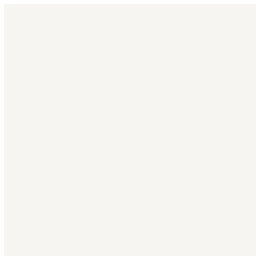


grey stained



black stained

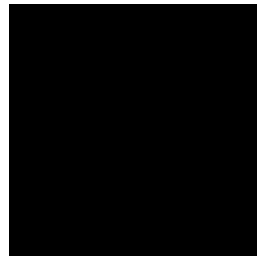
lacquer finishes / lacados



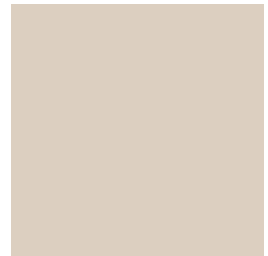
L1 white



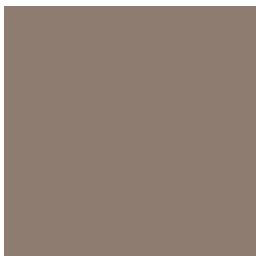
L18 light grey



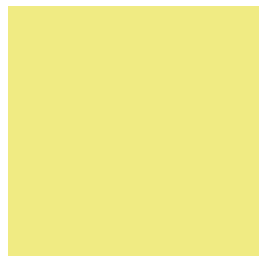
L19 black



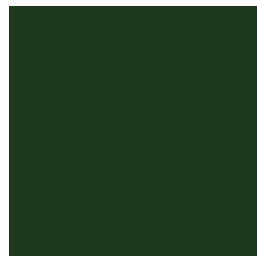
L3 creme



L5 taupe



L12 trumpet yellow



L17 forest green



L16 navy blue



L14 japanese red