

ESSENTIAL

Studio expormim

Sillón “Palmira” / armchair

C601

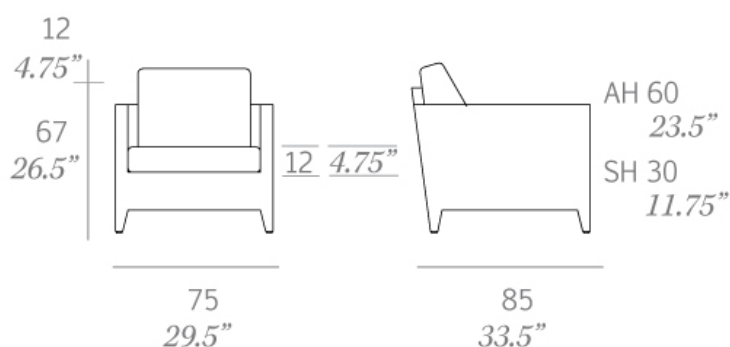
OUT



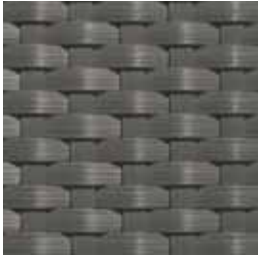
Colección fabricada en tubo de aluminio de alta resistencia y tejida a mano artesanalmente con fibra sintética plana (anchura 6/8,5 mm) de polietileno de alta densidad (HDPE). Todas las mesas de esta colección incorporan un sobre oculto de Policarbonato (PC) para garantizar una mayor solidez en la tapa. Sillones de comedor apilables.

Collection made of high resistance aluminum tube and hand-woven flat synthetic fiber made of high density polyethylene (HDPE), 0.24-0.33" wide. A hidden shell of polycarbonate (PC) reinforces the top of the dining tables. Stackable dining armchairs.

Medidas / Dimensions	75 x 85 x 67 cm 29.5" x 33.5" x 26.5"
Peso / Weight	11 kg / 24.3 lb
Volumen / Volume	0,43 m ³ / 15.19 ft ³



HDPE - Fibras sintéticas / synthetic fibres



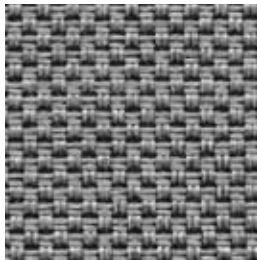
022 solid grey

Serie 2 - Confección / cushions

Duo Outdoor



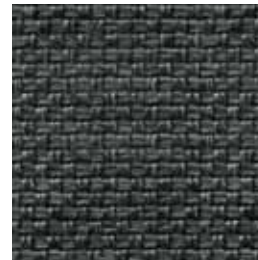
Duo 54



Duo 51



Duo 14



Duo 53



Duo 55



Duo 01

Serie 1 - Confección / cushions

Tempotest®



Marine C



Marine BG



Marine GC



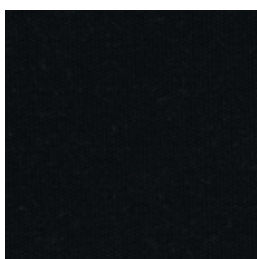
Marine G



Marine GN



Marine M



Marine NE



Marine MO



Marine A

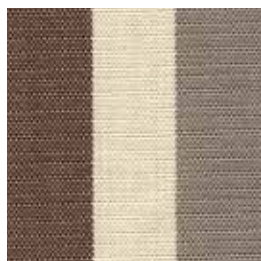


Marine VN

Serie 2 - Confección



Marivent 23



Marivent 40



Marivent 42



Marivent 44



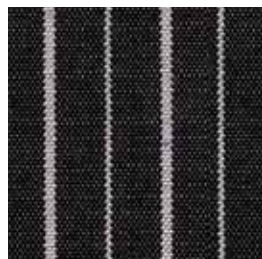
Marivent 24



Marivent 41



Marivent 43



Marivent 45