

## LUDLOW

## LDSP17

Ludlow Pressure Balance Shower Package with 5" Shower Rose, Handshower, Tub Spout and Diverter Lever Handle



ADA Compliance:  
 Adjustable Levels / Feet:  
 Adjustable Shelves:  
 Adjustable versus Fixed S  
 Ambient / Task:  
 Anti-scald Protection:  
 Assembly / Configuration  
 Automatic Drain:  
 Bathing Type:  
 Bathing Well Sitting Angl  
 Bolt Cap Material:  
 Bottom Angle / Pitch:  
 Bowl Shape:  
 Bulb Base Size:  
 Bulb Type:  
 Control Hole Diameter Re  
 Control Valve Rough-in D  
 Control Valve Rough-in D  
 Copper Supply Wire Recc  
 Current Draw At 208V:  
 Current Draw At 240V:  
 Deck Thickness Maximum  
 Deck Thickness Minimum  
 Depth / Width:  
 Depth to Overflow:  
 Diameter of Head:  
 Diameter of Legs / Tubes:  
 Diameter of Trapway:  
 Diverter Valve Rough-in C  
 Diverter Valve Rough-in C  
 Drain Assembly Materials  
 Drain Depth Maximum:  
 Drain Depth Minimum:  
 Drain Hole Depth:  
 Drain Hole Diameter:  
 Drain Style:  
 Drilling Option:  
 Electric Requirements:  
 Escutcheon Primary Mate  
 Fitting Hole Configuratio  
 Fittings Hole Depth:  
 Fittings Hole Diameter:  
 Flange Availability  
 Flow Restriction Options:  
 Flush Color / Finish:

Number of Bulbs:  
 Number of Drawers / Shelves:  
 Number of Feet:

null Bath  
 null 85.0 psi  
 null 20.0 psi  
 null 45.0 psi  
 Number of Generators:  
 Number of Handles:  
 Number of Holes:  
 Number of Legs:  
 Finish:  
 Trim Shape:  
 Connection Size:  
 Connection Type:  
 Width Depth Maximum:  
 Width Depth Minimum:  
 Width Hole Depth:  
 Width Hole Diameter:  
 Width Opening:  
 Weight Recommended:  
 Voltage At 208V:  
 Voltage At 240V:  
 Material:  
 Number of Electrical Feeds:  
 Recommended Maximum Flow Rate:  
 Minimum Supply Height Recommended:  
 Minimum Waste Height Recommended:  
 Warnings:  
 Weight:  
 Wheel Spread:  
 Finish:  
 Fitter Size:  
 Material:  
 Shape:  
 Single or Double Ended:  
 Availability:  
 Proofing:  
 Rivet:  
 Included in Unit:  
 Resistance:  
 Capacity:  
 Type:  
 Surface Shape:  
 Attachment Method:  
 Trap Seal Depth:  
 UL Recommended Protective Device At 208V:  
 UL Recommended Protective Device At 240V:

### TECHNICAL DETAILS

Unrestricted Maximum Flow at 45PSI:  
 Valve Material:  
 Voltage:  
 Waste and Overflow Horizontal Spread Maximum:  
 Waste and Overflow Horizontal Spread Minimum:  
 Waste and Overflow Outlet Spread:  
 Waste and Overflow Vertical Spread Maximum:  
 Waste and Overflow Vertical Spread Minimum:  
 85.0 psi  
 20.0 psi  
 45.0 psi  
 Wet / Dry:

### INSPIRATION

A touch of classic Americana. Our fresh take on iconic industrial design has clean lines and dimensional details, including exposed screws and square plates.

### CODES & STANDARDS

See individual component styles for Code Compliance. LDSh01, UNSH32, LDPB10, GUPB81, LDHS01, LD3P10, GUDV65, LDTS80

### PRODUCT FEATURES

This shower package is composed of the following product styles: LDSh01, UNSH32, LDPB10, GUPB81, LDHS01, LD3P10, GUDV65, LDTS80



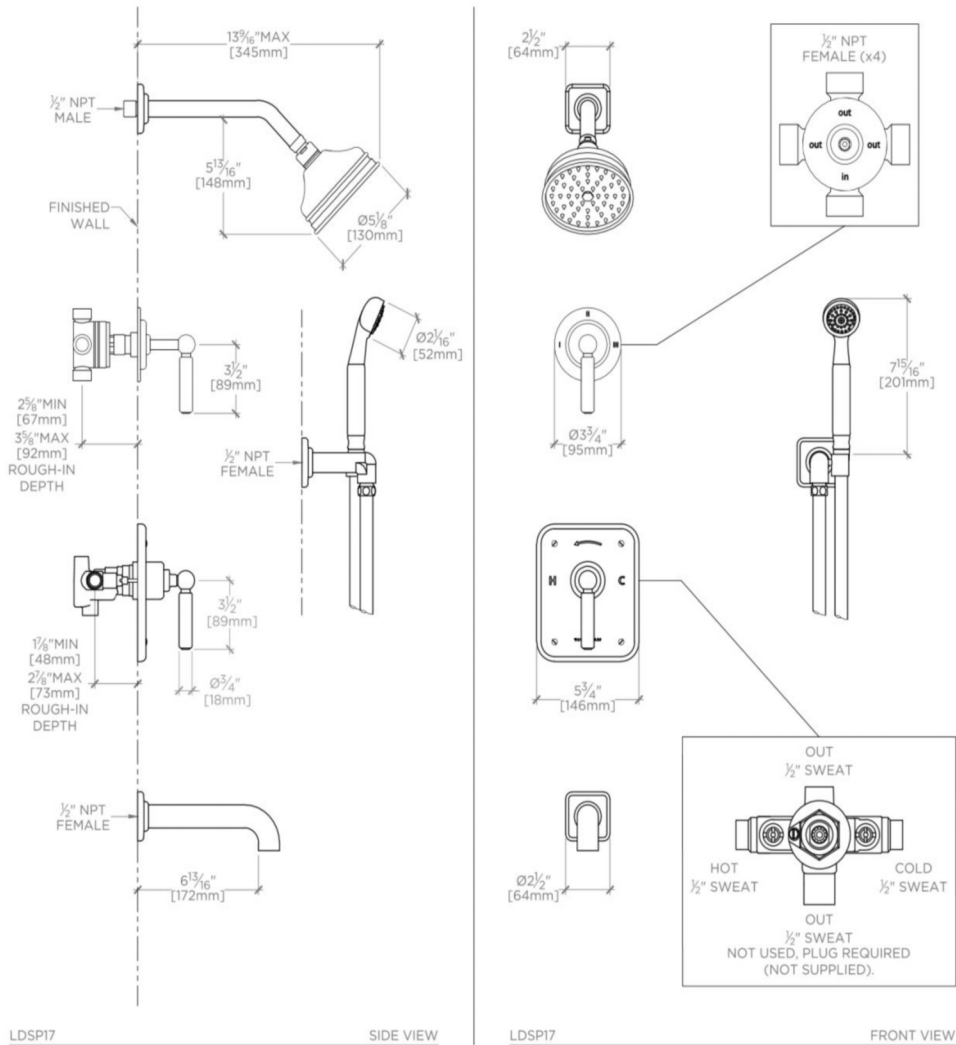
Feature Statement #1  
 Feature Statement #2  
 Feature Statement #3  
 Feature Statement #4  
 This shower package is composed of the

# WATERWORKS

## LUDLOW

## LDSP17

Ludlow Pressure Balance Shower Package with 5" Shower Rose, Handshower, Tub Spout and Diverter Lever Handle



THIS DRAWING IS NOT INTENDED FOR USE AS A PIPING SCHEMATIC