

rev. 09-04-2019



STY 106

Ver. 01


Miscelatore monocomando da piano per lavabo
Top-mounted mono-control mixer for washbasin


Acciaio inox AISI 316L - Stainless steel AISI 316L

FINITURE DISPONIBILI - AVAILABLE FINISHING

S: satinato - *satin*
L: lucido - *polish*

PULIZIA - CLEANING

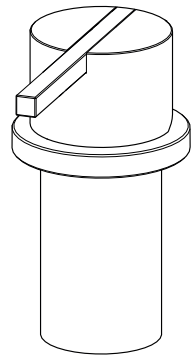
TO USE  - sapone neutro (ph 5.5)
neutral soap (ph 5.5)

DO NOT USE  - acido fluoridrico
hydrofluoric acid
- acido cloridrico e muriatico
cloric and muriatic acid
- ipoclorito di sodio
chlorine bleach

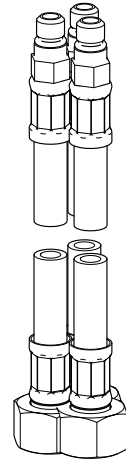
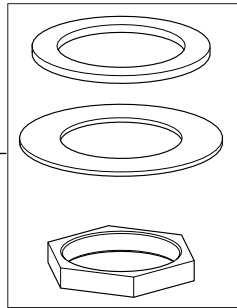
Documentazione di proprietà di LINKI SRL. Ogni riproduzione, anche parziale, è vietata. Nessun dato potrà essere comunicato a terzi senza preventiva autorizzazione dell'azienda. Linki SRL si riserva il diritto di apportare in qualsiasi momento, senza preavviso, modifiche al prodotto al fine del suo miglioramento.

The complete documentation is the exclusive property of Linki Srl. Every duplicate, even partial, is completely forbidden. No data can be shared with third parties without previous Company authorization. Linki SRL reserves the right to modify the product, any time and without previous notice, for the purpose of its improvement.

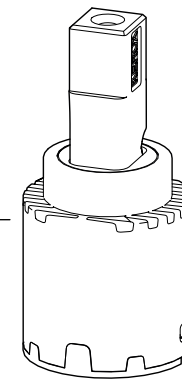
© 2019 Linki srl - all rights reserved



KIT 002



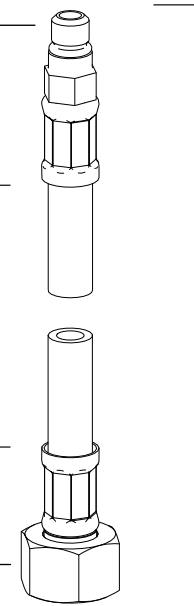
CAR001



M8X1

400mm
(15,74")

3/8" GAS



FL.01.01.400N

rev. 09-04-2019



STY 106

Ver. 01


Miscelatore monocomando da piano per lavabo
Top-mounted mono-control mixer for washbasin


Acciaio inox AISI 316L - Stainless steel AISI 316L

RICAMBI - SPARE PARTS

CAR001	Cartuccia Ø25 mm Cartridge Ø25 mm (Ø 0,98")
KIT002	Kit fissaggio Fastening kit
FL.01.01.400N	Flessibile 3/8" - M8x1 L.400mm Pipe 3/8" - M8x1 L.400mm (15,74")

PULIZIA - CLEANING

TO USE  - sapone neutro (ph 5.5)
neutral soap (ph 5.5)

DO NOT USE  - acido fluoridrico
hydrofluoric acid
- acido cloridrico e muriatico
chloric and muriatic acid
- ipoclorito di sodio
chlorine bleach

Documentazione di proprietà di LINKI SRL. Ogni riproduzione, anche parziale, è vietata. Nessun dato potrà essere comunicato a terzi senza preventiva autorizzazione dell'azienda.
Linki SRL si riserva il diritto di apportare in qualsiasi momento, senza preavviso, modifiche al prodotto al fine del suo miglioramento.

*The complete documentation is the exclusive property of Linki Srl. Every duplicate, even partial, is completely forbidden. No data can be shared with third parties without previous Company authorization.
Linki SRL reserves the right to modify the product, any time and without previous notice, for the purpose of its improvement.*

© 2019 Linki srl - all rights reserved