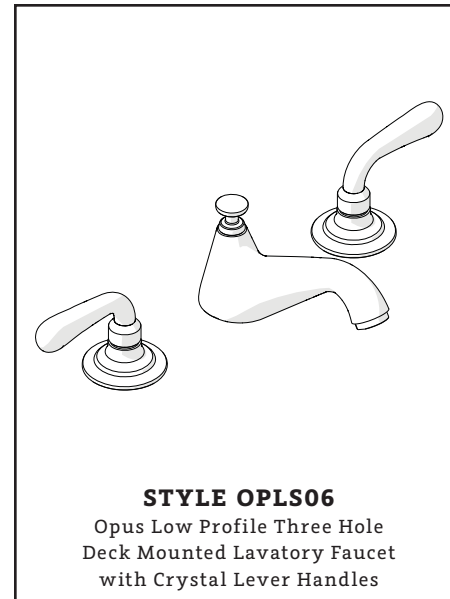
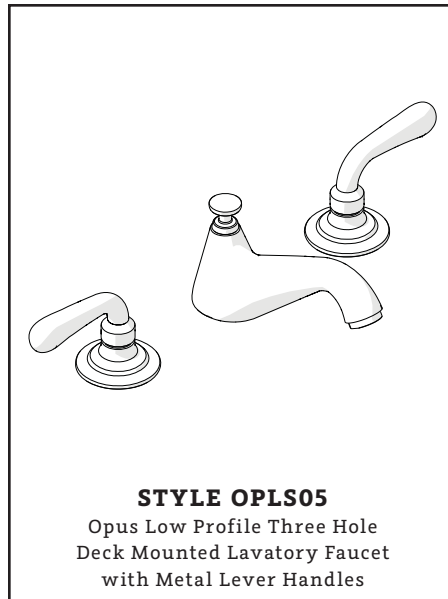
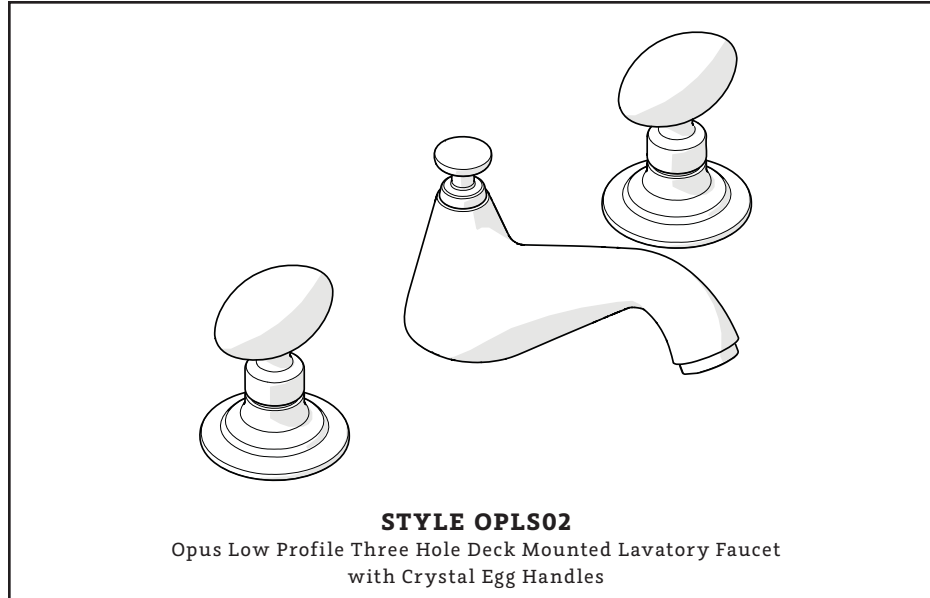




ESTB. 1978

WATERWORKS

SERVICE PARTS



WELCOME TO

WATERWORKS

For over three decades, Waterworks has transformed the bath through an absolute commitment to design authenticity, innovation and quality. A blend of scholarly appreciation and applied experience guarantees mechanical integrity, meticulous craftsmanship, and timeless designs.

**TO ORDER PARTS CALL
1 (800) 927-2120 (EXT 2)**

Order by part number and specify color, finish, or other options if required.

PRODUCT SUPPORT

Our Product Support team provides troubleshooting and technical problem resolution, including replacement parts and installation recommendations throughout the life of your product.

Product Support is available Monday through Friday, 8AM-6PM EST.

**LIMITED LIFETIME
WARRANTY**

Our warranty covers repair and replacement of Waterworks products if within the applicable coverage period and deemed defective by Waterworks. Waterworks will, at its option, repair or replace such products; this does not include installation costs, labor charges, or other incidental or consequential costs.

To obtain your complete warranty or inquire about warranty service, please visit us at www.waterworks.com or contact our Product Support Team.



ESTB. 1978

WATERWORKS

MAIN KITS

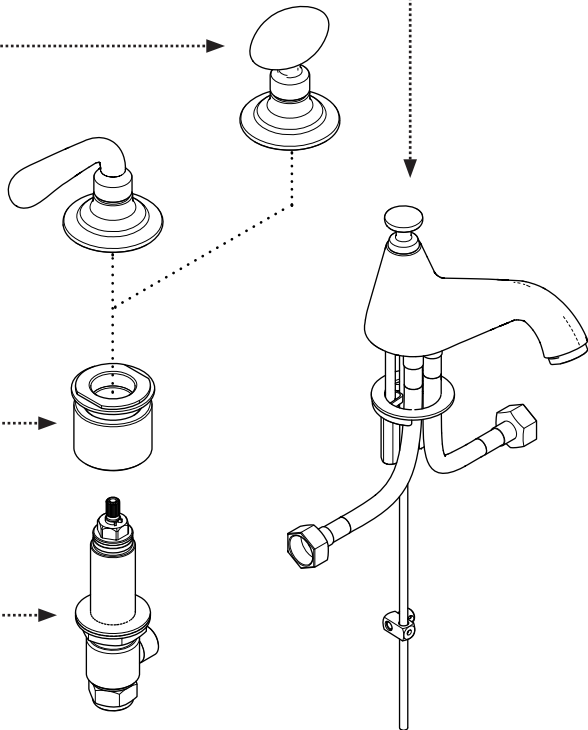
STYLES: OPLS02, OPLS05, OPLS06

103916*
SPOUT

103911*
EGG HANDLE

103913
HANDLE CONNECTOR

103912
COUNTERCLOCKWISE
ON SIDEBODY



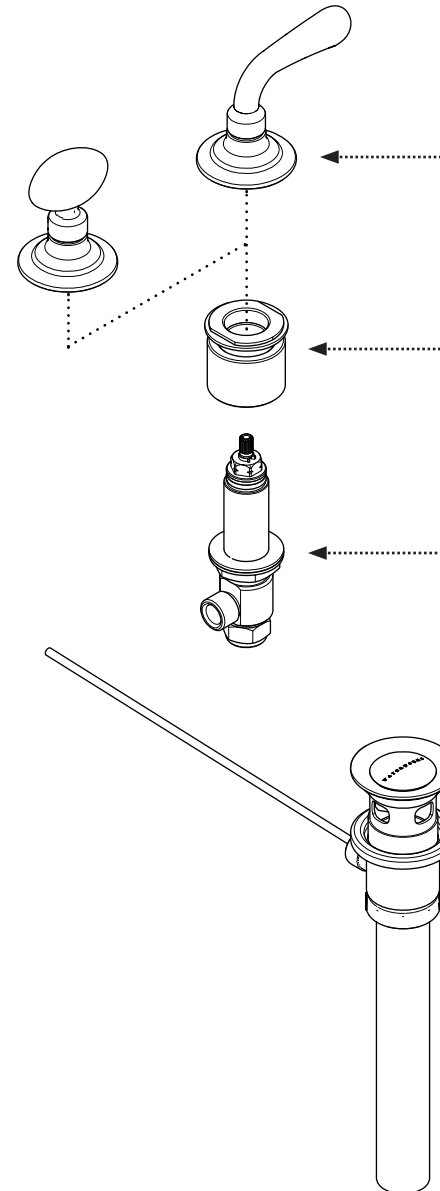
*FINISH/COLOR MUST BE SPECIFIED WHEN ORDERING
++SUPPLIED AS A PAIR

103998*
METAL LEVER HANDLE
103921*
CRYSTAL LEVER HANDLE

103913
HANDLE CONNECTOR

103912
COUNTERCLOCKWISE ON SIDEBODY
103919
CLOCKWISE ON SIDEBODY
[LEVER HANDLE ONLY]

103906*
DRAIN





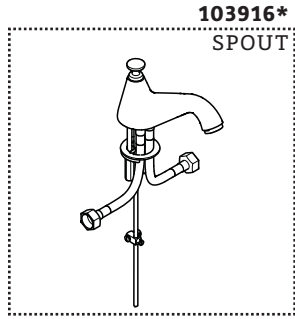
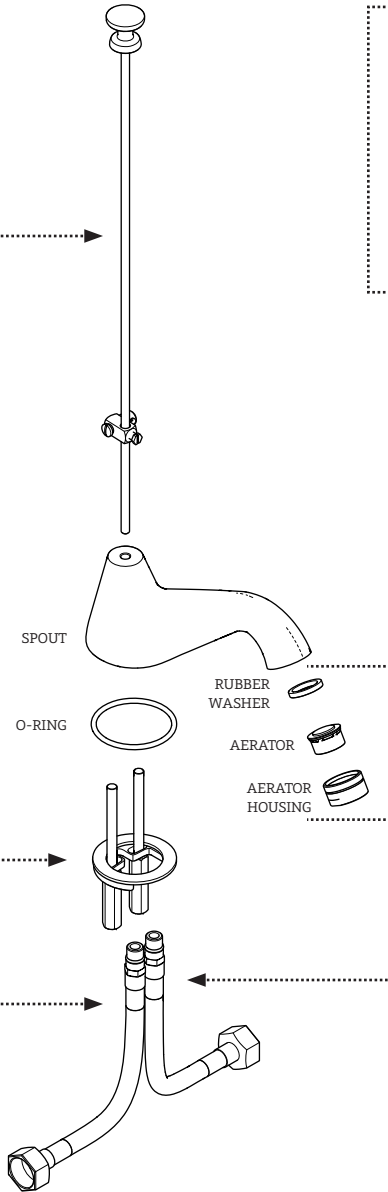
ESTB. 1978

WATERWORKS

KIT COMPONENTS

STYLES: OPLS02, OPLS05, OPLS06

103903*
LIFT ROD



103904
MOUNTING HARDWARE

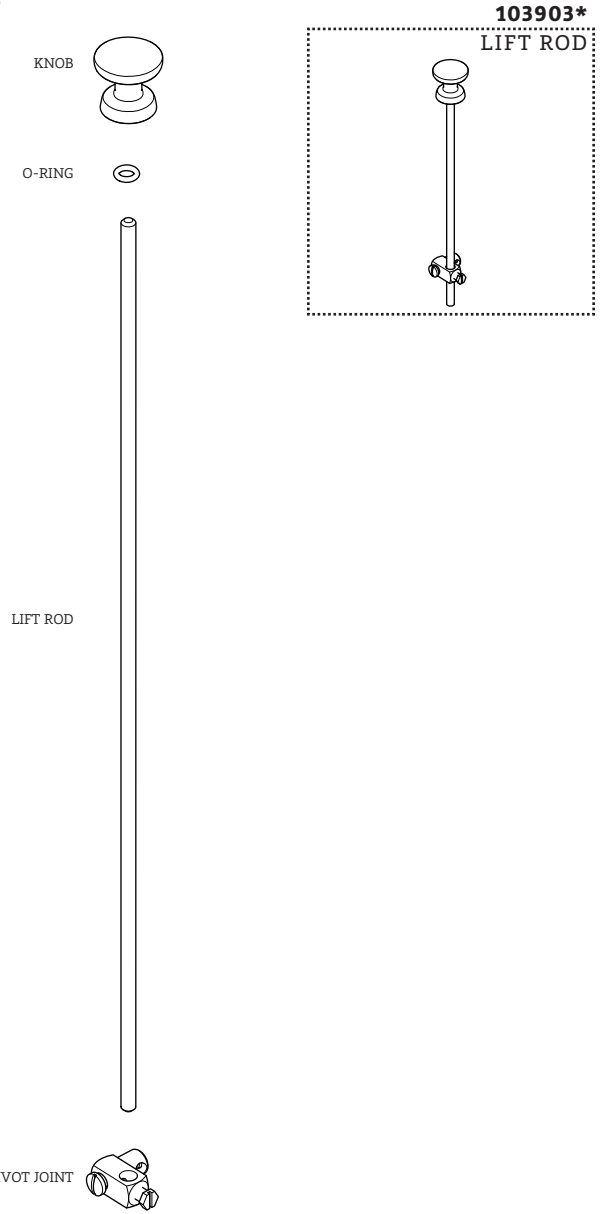
103914
HOSE

103915*
AERATOR

103914
HOSE

*FINISH/COLOR MUST BE SPECIFIED WHEN ORDERING
++SUPPLIED AS A PAIR

KIT COMPONENTS





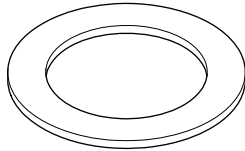
ESTB. 1978

WATERWORKS

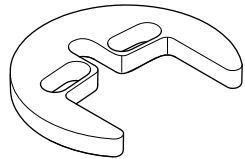
KIT COMPONENTS

STYLES: OPLS02, OPLS05, OPLS06

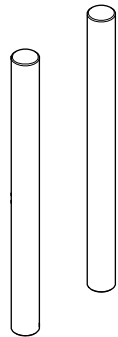
RUBBER WASHER



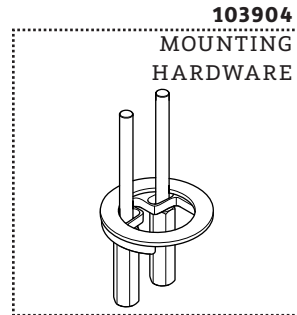
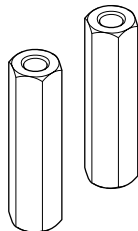
METAL WASHER



THREADED ROD



NUT



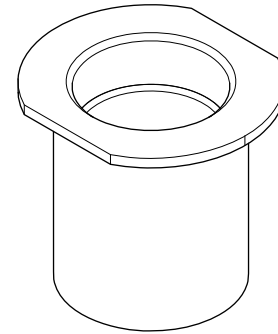
103904

MOUNTING
HARDWARE

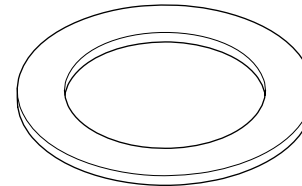
*FINISH/COLOR MUST BE SPECIFIED WHEN ORDERING
++SUPPLIED AS A PAIR

KIT COMPONENTS

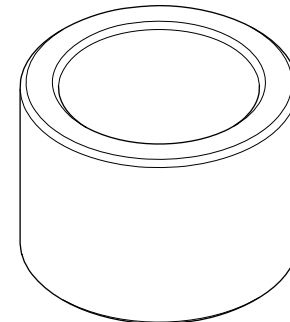
TRIM CONNECTOR



RUBBER WASHER



SPACER



103913
HANDLE CONNECTOR





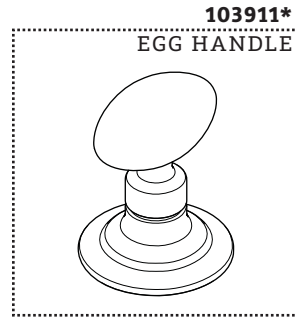
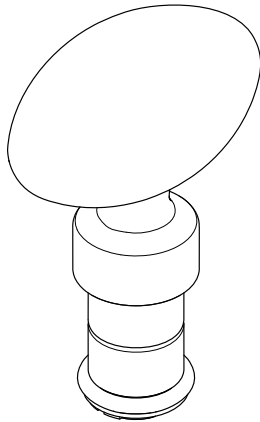
ESTB. 1978

WATERWORKS

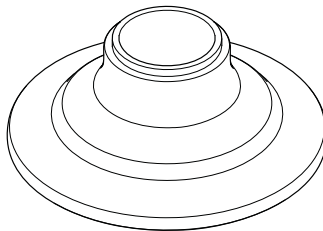
KIT COMPONENTS

STYLES: OPLS02, OPLS05, OPLS06

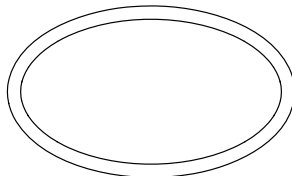
048771
EGG HANDLE LESS
FLANGE



ESCUTCHEON

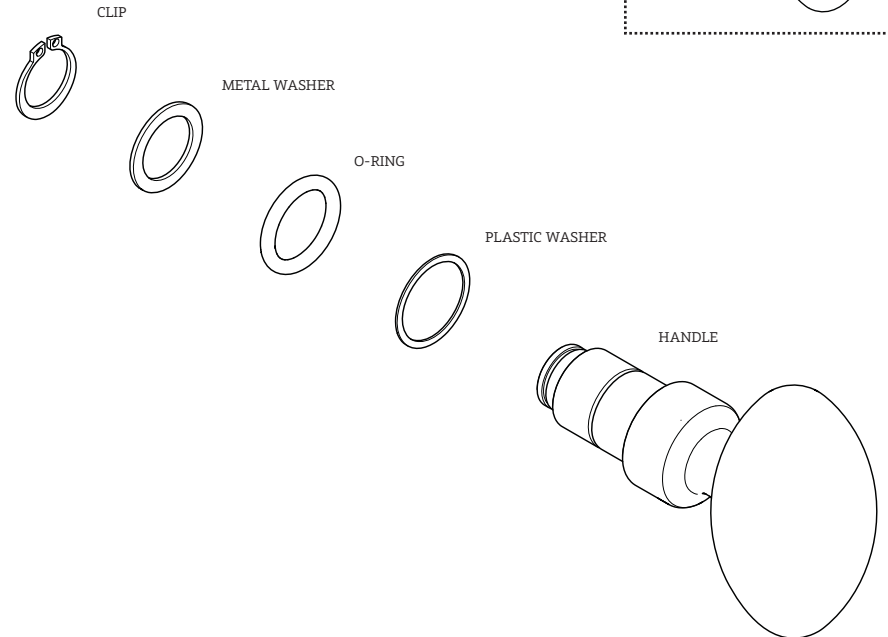


O-RING



*FINISH/COLOR MUST BE SPECIFIED WHEN ORDERING
++SUPPLIED AS A PAIR

KIT COMPONENTS





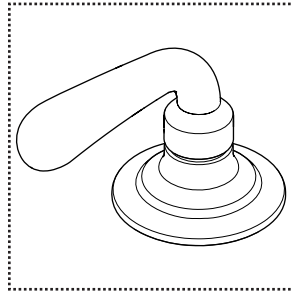
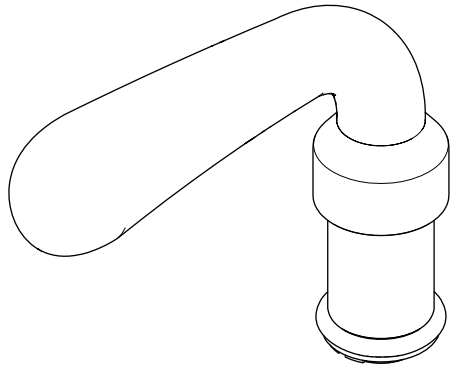
ESTB. 1978

WATERWORKS

STYLES: OPLS02, OPLS05, OPLS06

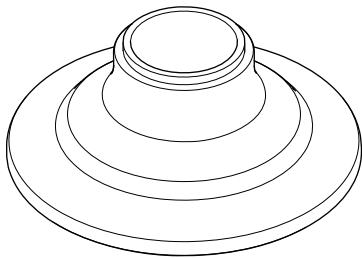
KIT COMPONENTS

- 103998***
METAL LEVER HANDLE
- 103921***
CRYSTAL LEVER HANDLE

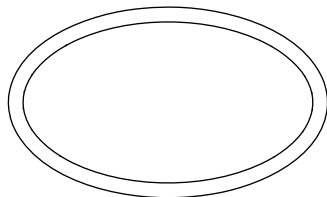


- 103917***
METAL LEVER HANDLE
LESS FLANGE
- 103920**
CRYSTAL LEVER HANDLE
LESS FLANGE

ESCUTCHEON



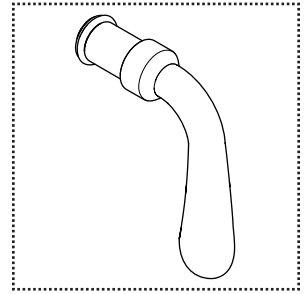
O-RING



*FINISH/COLOR MUST BE SPECIFIED WHEN ORDERING
++SUPPLIED AS A PAIR

KIT COMPONENTS

- 103917***
METAL LEVER HANDLE
LESS FLANGE
- 103920**
CRYSTAL LEVER HANDLE
LESS FLANGE



CLIP



METAL WASHER



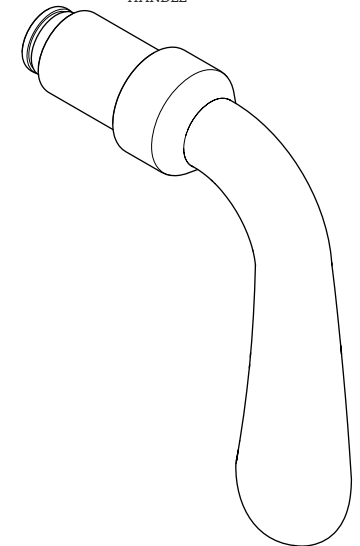
O-RING



PLASTIC WASHER



HANDLE





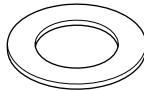
ESTB. 1978

WATERWORKS

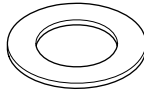
KIT COMPONENTS

STYLES: OPLS02, OPLS05, OPLS06

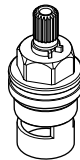
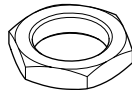
RUBBER WASHER



METAL WASHER

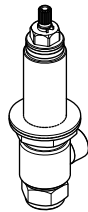


NUT



103912

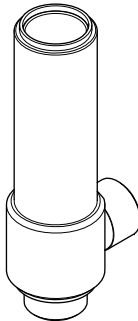
COUNTERCLOCKWISE
ON SIDEBODY



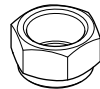
337847

COUNTERCLOCKWISE ON
CARTRIDGE

SIDEBODY



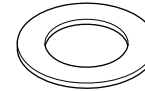
NUT



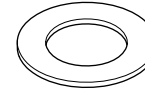
*FINISH/COLOR MUST BE SPECIFIED WHEN ORDERING
++SUPPLIED AS A PAIR

KIT COMPONENTS

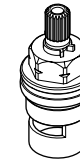
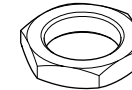
RUBBER WASHER



METAL WASHER

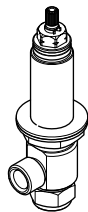


NUT



103919

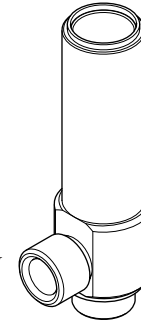
CLOCKWISE ON
SIDEBODY



258790

CLOCKWISE ON CARTRIDGE

SIDEBODY



NUT





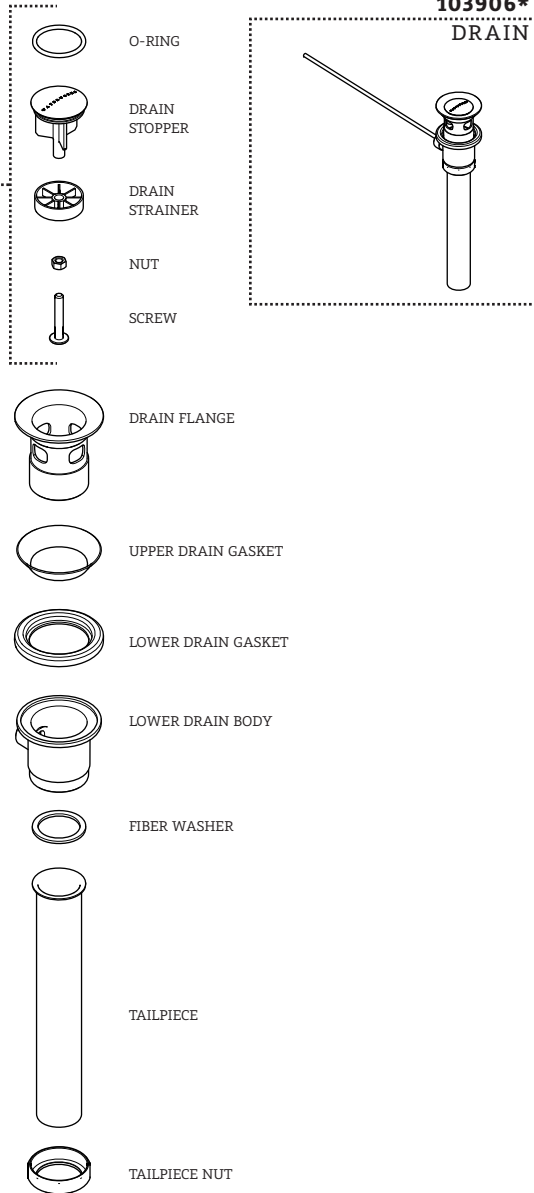
ESTB. 1978

WATERWORKS

KIT COMPONENTS

STYLES: OPLS02, OPLS05, OPLS06

064346*
DRAIN STOPPER



*FINISH/COLOR MUST BE SPECIFIED WHEN ORDERING
++SUPPLIED AS A PAIR

SERVICE PARTS INDEX

<u>STYLE</u>	<u>DESCRIPTION</u>	<u>PG</u>
103915*	AERATOR	4
258790	CLOCKWISE ON CARTRIDGE	13
103919	CLOCKWISE ON SIDEBODY	13
337847	COUNTERCLOCKWISE ON CARTRIDGE	12
103912	COUNTERCLOCKWISE ON SIDEBODY	12
103921*	CRYSTAL LEVER HANDLE	10
103920	CRYSTAL LEVER HANDLE LESS FLANGE	11
103906*	DRAIN	14
064346*	DRAIN STOPPER	14
103911*	EGG HANDLE	8
048771	EGG HANDLE LESS FLANGE	9
103913	HANDLE CONNECTOR	7
103914	HOSE	4
103903*	LIFT ROD	5
103998*	METAL LEVER HANDLE	10
103917*	METAL LEVER HANDLE LESS FLANGE	11
103904	MOUNTING HARDWARE	6
103916*	SPOUT	4

DOCUMENT: SPOP01_REV01



ESTB. 1978

WATERWORKS

NOTES

STYLES: OPLS02, OPLS05, OPLS06

*FINISH/COLOR MUST BE SPECIFIED WHEN ORDERING
++SUPPLIED AS A PAIR

NOTES



ESTB. 1978

WATERWORKS

PRODUCT SUPPORT

60 BACKUS AVENUE
DANBURY, CT 06810

1 (800) 927-2120 (EXT 2)

WWW.WATERWORKS.COM