

Il Tesi Clean, evoluzione del radiatore Tesi, grazie alla sua particolare struttura ad elementi singoli distanziati, permette l'utilizzo in ambienti particolari quali case di cura, scuole e ospedali dove la pulizia dei corpi scaldanti deve essere eseguita in modo idoneo. Le principali caratteristiche di questo prodotto sono: la distanza tra un elemento e un altro che è pari a 65 mm, l'assenza di angoli o spigoli vivi, la possibilità di poterlo collegare idraulicamente con diversi allacciamenti. Tesi Clean è disponibile in tutti i colonnaggi (da 2 a 6 colonne) ed in tutte le altezze (da 300 mm a 2500 mm). Grazie alla sua particolare struttura a tubi rotondi (diametro 25 mm) ne rende il suo funzionamento ideale anche per impianti a bassa temperatura. Le rese di Tesi Clean sono state misurate secondo le norme tecniche EN 442.



Tesi Clean, 15 elementi, altezza 1800 mm, Bianco Standard

## **Caratteristiche costruttive**

tubi in lamiera d'acciaio di diametro 25 mm

collettori in lamiera d'acciaio stampati

larghezza elementi 65 mm (passo elemento)

filettature estremità collettore sup. e inf. 1"1/4 G dx e sx

pressione di esercizio massima ammessa 8 bar

temperatura di esercizio massima ammessa 95°C

misura dell'interasse valvola Irsap pari a 41÷44 mm

misura dell'interasse detentore Irsap pari a 41÷44 mm

## Certificazioni



## Plus



## Dati tecnici

| Modello          | Profondità (mm) | Altezza (mm) | Interasse (mm) | Peso (kg) | Capacità (lt) | $\Delta t=50^{\circ}\text{C}$ (kcal/h) | $\Delta t=50^{\circ}\text{C}$ (Watt) | $\Delta t=40^{\circ}\text{C}$ (Watt) | $\Delta t=30^{\circ}\text{C}$ (Watt) | $\Delta t=20^{\circ}\text{C}$ (Watt) | Esponente |
|------------------|-----------------|--------------|----------------|-----------|---------------|--|--------------------------------------|--------------------------------------|--------------------------------------|--------------------------------------|-----------|
| TESI 2 CLEAN 300 | 65,0            | 302          | 235            | 0,58      | 0,53          | 23,7                                   | 27,6                                 | 20,8                                 | 14,5                                 | 8,7                                  | 1,263     |
| TESI 3 CLEAN 300 | 101,0           | 302          | 235            | 0,73      | 0,71          | 31,5                                   | 36,6                                 | 27,6                                 | 19,2                                 | 11,6                                 | 1,258     |
| TESI 4 CLEAN 300 | 139,0           | 302          | 235            | 0,96      | 0,89          | 39,6                                   | 46,0                                 | 34,6                                 | 24,0                                 | 14,3                                 | 1,273     |
| TESI 5 CLEAN 300 | 177,0           | 302          | 235            | 1,26      | 0,95          | 48,8                                   | 56,7                                 | 42,7                                 | 29,6                                 | 17,6                                 | 1,275     |
| TESI 6 CLEAN 300 | 215,0           | 302          | 235            | 1,48      | 1,13          | 57,9                                   | 67,3                                 | 50,7                                 | 35,2                                 | 21,1                                 | 1,268     |
| TESI 2 CLEAN 400 | 65,0            | 402          | 335            | 0,70      | 0,61          | 31,0                                   | 36,0                                 | 27,1                                 | 18,9                                 | 11,3                                 | 1,267     |
| TESI 3 CLEAN 400 | 101,0           | 402          | 335            | 0,91      | 0,83          | 41,5                                   | 48,2                                 | 36,3                                 | 25,2                                 | 15,1                                 | 1,266     |
| TESI 4 CLEAN 400 | 139,0           | 402          | 335            | 1,19      | 1,06          | 51,9                                   | 60,4                                 | 45,4                                 | 31,4                                 | 18,7                                 | 1,282     |
| TESI 5 CLEAN 400 | 177,0           | 402          | 335            | 1,55      | 1,16          | 63,9                                   | 74,3                                 | 55,8                                 | 38,6                                 | 23,0                                 | 1,281     |
| TESI 6 CLEAN 400 | 215,0           | 402          | 335            | 1,84      | 1,38          | 75,8                                   | 88,1                                 | 66,3                                 | 46,0                                 | 27,4                                 | 1,273     |
| TESI 2 CLEAN 500 | 65,0            | 502          | 435            | 0,82      | 0,69          | 38,1                                   | 44,3                                 | 33,4                                 | 23,1                                 | 13,8                                 | 1,271     |
| TESI 3 CLEAN 500 | 101,0           | 502          | 435            | 1,09      | 0,96          | 51,2                                   | 59,5                                 | 44,8                                 | 31,0                                 | 18,5                                 | 1,274     |
| TESI 4 CLEAN 500 | 139,0           | 502          | 435            | 1,43      | 1,22          | 64,2                                   | 74,7                                 | 56,0                                 | 38,7                                 | 22,9                                 | 1,290     |
| TESI 5 CLEAN 500 | 177,0           | 502          | 435            | 1,85      | 1,37          | 78,9                                   | 91,7                                 | 68,8                                 | 47,5                                 | 28,2                                 | 1,287     |
| TESI 6 CLEAN 500 | 215,0           | 502          | 435            | 2,19      | 1,63          | 93,5                                   | 108,7                                | 81,8                                 | 56,6                                 | 33,7                                 | 1,277     |
| TESI 2 CLEAN 600 | 65,0            | 602          | 535            | 0,94      | 0,78          | 45,1                                   | 52,5                                 | 39,5                                 | 27,4                                 | 16,3                                 | 1,275     |

|                      |       |      |      |      |      |       |       |       |       |      |       |
|----------------------|-------|------|------|------|------|-------|-------|-------|-------|------|-------|
| TESI 3 CLEAN<br>600  | 101,0 | 602  | 535  | 1,26 | 1,08 | 60,9  | 70,8  | 53,2  | 36,8  | 21,9 | 1,282 |
| TESI 4 CLEAN<br>600  | 139,0 | 602  | 535  | 1,67 | 1,39 | 76,4  | 88,8  | 66,5  | 45,8  | 27,0 | 1,298 |
| TESI 5 CLEAN<br>600  | 177,0 | 602  | 535  | 2,15 | 1,58 | 93,6  | 108,8 | 81,5  | 56,2  | 33,3 | 1,293 |
| TESI 6 CLEAN<br>600  | 215,0 | 602  | 535  | 2,55 | 1,88 | 110,9 | 129,0 | 96,9  | 67,0  | 39,9 | 1,282 |
| TESI 2 CLEAN<br>750  | 65,0  | 752  | 685  | 1,12 | 0,90 | 55,6  | 64,7  | 48,6  | 33,6  | 20,0 | 1,281 |
| TESI 3 CLEAN<br>750  | 101,0 | 752  | 685  | 1,53 | 1,27 | 75,2  | 87,5  | 65,5  | 45,2  | 26,7 | 1,294 |
| TESI 4 CLEAN<br>750  | 139,0 | 752  | 685  | 2,02 | 1,64 | 94,3  | 109,7 | 81,9  | 56,2  | 33,0 | 1,310 |
| TESI 5 CLEAN<br>750  | 177,0 | 752  | 685  | 2,59 | 1,89 | 115,3 | 134,1 | 100,3 | 69,0  | 40,7 | 1,301 |
| TESI 6 CLEAN<br>750  | 215,0 | 752  | 685  | 3,08 | 2,25 | 136,7 | 159,0 | 119,3 | 82,3  | 48,8 | 1,288 |
| TESI 2 CLEAN<br>900  | 65,0  | 902  | 835  | 1,29 | 1,03 | 66,0  | 76,8  | 57,6  | 39,8  | 23,6 | 1,286 |
| TESI 3 CLEAN<br>900  | 101,0 | 902  | 835  | 1,80 | 1,46 | 89,4  | 104,0 | 77,7  | 53,4  | 31,4 | 1,306 |
| TESI 4 CLEAN<br>900  | 139,0 | 902  | 835  | 2,38 | 1,89 | 112,1 | 130,4 | 97,1  | 66,4  | 38,8 | 1,322 |
| TESI 5 CLEAN<br>900  | 177,0 | 902  | 835  | 3,03 | 2,20 | 136,8 | 159,1 | 118,8 | 81,5  | 47,9 | 1,310 |
| TESI 6 CLEAN<br>900  | 215,0 | 902  | 835  | 3,61 | 2,63 | 162,1 | 188,5 | 141,2 | 97,3  | 57,5 | 1,295 |
| TESI 2 CLEAN<br>1000 | 65,0  | 1002 | 935  | 1,50 | 1,10 | 73,0  | 84,9  | 63,7  | 43,9  | 26,0 | 1,290 |
| TESI 3 CLEAN<br>1000 | 101,0 | 1002 | 935  | 2,11 | 1,56 | 98,8  | 114,9 | 85,7  | 58,7  | 34,5 | 1,315 |
| TESI 4 CLEAN<br>1000 | 139,0 | 1002 | 935  | 2,79 | 2,03 | 123,8 | 144,0 | 107,0 | 73,0  | 42,6 | 1,330 |
| TESI 5 CLEAN<br>1000 | 177,0 | 1002 | 935  | 3,56 | 2,38 | 151,0 | 175,6 | 130,9 | 89,7  | 52,6 | 1,316 |
| TESI 6 CLEAN<br>1000 | 215,0 | 1002 | 935  | 4,24 | 2,84 | 178,9 | 208,0 | 155,6 | 107,1 | 63,2 | 1,300 |
| TESI 2 CLEAN<br>1200 | 65,0  | 1202 | 1135 | 1,76 | 1,26 | 86,8  | 100,9 | 75,6  | 52,1  | 30,8 | 1,296 |
| TESI 3 CLEAN<br>1200 | 101,0 | 1202 | 1135 | 2,50 | 1,81 | 117,5 | 136,6 | 101,8 | 69,8  | 40,9 | 1,316 |
| TESI 4 CLEAN<br>1200 | 139,0 | 1202 | 1135 | 3,31 | 2,36 | 147,1 | 171,0 | 127,2 | 86,8  | 50,7 | 1,327 |

|                      |       |      |      |      |      |       |       |       |       |       |       |
|----------------------|-------|------|------|------|------|-------|-------|-------|-------|-------|-------|
| TESI 5 CLEAN<br>1200 | 177,0 | 1202 | 1135 | 4,20 | 2,79 | 179,0 | 208,1 | 155,2 | 106,3 | 62,4  | 1,315 |
| TESI 6 CLEAN<br>1200 | 215,0 | 1202 | 1135 | 5,02 | 3,33 | 212,0 | 246,5 | 184,4 | 126,8 | 74,8  | 1,301 |
| TESI 2 CLEAN<br>1500 | 65,0  | 1502 | 1435 | 2,15 | 1,51 | 107,6 | 125,1 | 93,5  | 64,3  | 37,9  | 1,303 |
| TESI 3 CLEAN<br>1500 | 101,0 | 1502 | 1435 | 3,08 | 2,18 | 145,2 | 168,8 | 125,8 | 86,1  | 50,5  | 1,318 |
| TESI 4 CLEAN<br>1500 | 139,0 | 1502 | 1435 | 4,09 | 2,85 | 181,4 | 210,9 | 157,0 | 107,3 | 62,7  | 1,324 |
| TESI 5 CLEAN<br>1500 | 177,0 | 1502 | 1435 | 5,18 | 3,40 | 220,2 | 256,1 | 191,0 | 130,8 | 76,8  | 1,315 |
| TESI 6 CLEAN<br>1500 | 215,0 | 1502 | 1435 | 6,18 | 4,07 | 260,8 | 303,3 | 226,8 | 155,9 | 92,0  | 1,302 |
| TESI 2 CLEAN<br>1800 | 65,0  | 1802 | 1735 | 2,54 | 1,75 | 128,5 | 149,4 | 111,5 | 76,5  | 45,0  | 1,311 |
| TESI 3 CLEAN<br>1800 | 101,0 | 1802 | 1735 | 3,67 | 2,54 | 172,4 | 200,5 | 149,4 | 102,2 | 59,9  | 1,319 |
| TESI 4 CLEAN<br>1800 | 139,0 | 1802 | 1735 | 4,87 | 3,34 | 215,1 | 250,1 | 186,3 | 127,4 | 74,6  | 1,320 |
| TESI 5 CLEAN<br>1800 | 177,0 | 1802 | 1735 | 6,15 | 4,01 | 260,7 | 303,1 | 226,1 | 154,9 | 90,9  | 1,314 |
| TESI 6 CLEAN<br>1800 | 215,0 | 1802 | 1735 | 7,35 | 4,80 | 308,6 | 358,9 | 268,3 | 184,4 | 108,7 | 1,304 |
| TESI 2 CLEAN<br>2000 | 65,0  | 2002 | 1935 | 2,80 | 1,92 | 142,5 | 165,7 | 123,8 | 85,0  | 50,1  | 1,306 |
| TESI 3 CLEAN<br>2000 | 101,0 | 2002 | 1935 | 4,05 | 2,79 | 190,4 | 221,4 | 165,0 | 112,9 | 66,1  | 1,319 |
| TESI 4 CLEAN<br>2000 | 139,0 | 2002 | 1935 | 5,39 | 3,66 | 237,2 | 275,8 | 205,5 | 140,6 | 82,3  | 1,320 |
| TESI 5 CLEAN<br>2000 | 177,0 | 2002 | 1935 | 6,80 | 4,42 | 287,2 | 334,0 | 249,1 | 170,6 | 100,1 | 1,315 |
| TESI 6 CLEAN<br>2000 | 215,0 | 2002 | 1935 | 8,13 | 5,29 | 340,0 | 395,4 | 295,1 | 202,3 | 118,9 | 1,312 |
| TESI 2 CLEAN<br>2200 | 65,0  | 2202 | 2135 | 3,06 | 2,08 | 156,5 | 182,0 | 136,1 | 93,6  | 55,2  | 1,302 |
| TESI 3 CLEAN<br>2200 | 101,0 | 2202 | 2135 | 4,44 | 3,03 | 208,3 | 242,2 | 180,5 | 123,5 | 72,4  | 1,318 |
| TESI 4 CLEAN<br>2200 | 139,0 | 2202 | 2135 | 5,90 | 3,99 | 259,1 | 301,3 | 224,5 | 153,6 | 90,0  | 1,319 |
| TESI 5 CLEAN<br>2200 | 177,0 | 2202 | 2135 | 7,44 | 4,83 | 313,5 | 364,5 | 271,7 | 186,1 | 109,1 | 1,317 |
| TESI 6 CLEAN<br>2200 | 215,0 | 2202 | 2135 | 8,90 | 5,78 | 371,1 | 431,5 | 321,4 | 219,9 | 128,8 | 1,320 |

|                      |       |      |      |       |      |       |       |       |       |       |       |
|----------------------|-------|------|------|-------|------|-------|-------|-------|-------|-------|-------|
| TESI 2 CLEAN<br>2500 | 65,0  | 2502 | 2435 | 3,45  | 2,32 | 177,8 | 206,8 | 154,9 | 106,8 | 63,1  | 1,295 |
| TESI 3 CLEAN<br>2500 | 101,0 | 2502 | 2435 | 5,03  | 3,40 | 234,9 | 273,1 | 203,6 | 139,4 | 81,8  | 1,316 |
| TESI 4 CLEAN<br>2500 | 139,0 | 2502 | 2435 | 6,68  | 4,48 | 291,6 | 339,1 | 252,7 | 172,9 | 101,3 | 1,319 |
| TESI 5 CLEAN<br>2500 | 177,0 | 2502 | 2435 | 8,42  | 5,44 | 352,3 | 409,6 | 305,2 | 208,9 | 122,4 | 1,318 |
| TESI 6 CLEAN<br>2500 | 215,0 | 2502 | 2435 | 10,07 | 6,52 | 417,0 | 484,9 | 360,2 | 245,6 | 143,1 | 1,332 |

Grazie alle elevate prestazioni dei radiatori Tesi Clean, il  $\Delta t$  ideale per la progettazione a bassa temperatura è 30°C

Per  $\Delta t$  diversi da 50°C utilizzare la formula:  $Q=Q_n (\Delta t / 50)^n$

A partire dalle vendite dell'anno 2010, tutta la gamma dei radiatori TESI è garantita 10 anni.

## Rese a batteria

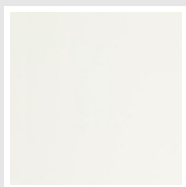
| Lunghezza (mm) | N° Elementi |               | 302  | 402  | 502  | 602  | 752  | 902  | 1002 | 1202 | 1502 | 1802 | 2002 | 2202 | 2502 |
|----------------|-------------|---------------|------|------|------|------|------|------|------|------|------|------|------|------|------|
| 130            | 2           | Watt =<br>W = | 55   | 176  | 217  | 258  | 318  | 261  | 230  | 273  | 250  | 299  | 331  | 863  | 970  |
| 195            | 3           | Watt =<br>W = | 83   | 264  | 326  | 387  | 477  | 391  | 345  | 410  | 375  | 448  | 497  | 1294 | 1455 |
| 260            | 4           | Watt =<br>W = | 110  | 352  | 435  | 516  | 536  | 522  | 460  | 546  | 500  | 598  | 663  | 1726 | 1940 |
| 325            | 5           | Watt =<br>W = | 138  | 440  | 544  | 645  | 670  | 652  | 574  | 683  | 626  | 747  | 828  | 2158 | 2424 |
| 390            | 6           | Watt =<br>W = | 166  | 529  | 652  | 774  | 805  | 782  | 689  | 820  | 751  | 896  | 994  | 2589 | 2909 |
| 455            | 7           | Watt =<br>W = | 193  | 617  | 761  | 903  | 939  | 913  | 804  | 956  | 876  | 1046 | 1160 | 3020 | 3394 |
| 520            | 8           | Watt =<br>W = | 221  | 705  | 870  | 1032 | 1073 | 1043 | 919  | 1093 | 1001 | 1195 | 1326 | 3452 | 3879 |
| 585            | 9           | Watt =<br>W = | 248  | 793  | 978  | 1161 | 1207 | 1174 | 1034 | 1229 | 1126 | 1345 | 3559 | 3884 | 4364 |
| 650            | 10          | Watt =<br>W = | 276  | 881  | 1087 | 1290 | 1341 | 1304 | 1149 | 1366 | 1251 | 1494 | 3954 | 4315 | 4849 |
| 715            | 11          | Watt =<br>W = | 304  | 969  | 1196 | 1419 | 1475 | 1434 | 1264 | 1503 | 1376 | 1643 | 4349 | 4746 | 5334 |
| 780            | 12          | Watt =<br>W = | 331  | 1057 | 1304 | 1548 | 1609 | 1565 | 1379 | 1639 | 1501 | 1793 | 4745 | 5178 | 5819 |
| 845            | 13          | Watt =<br>W = | 359  | 1145 | 1413 | 1677 | 1743 | 1695 | 1494 | 1776 | 1626 | 1942 | 5140 | 3149 | 3550 |
| 910            | 14          | Watt =<br>W = | 386  | 1233 | 1522 | 1806 | 1877 | 1826 | 1609 | 1912 | 1751 | 2092 | 5536 | 3391 | 3823 |
| 975            | 15          | Watt =<br>W = | 1010 | 1322 | 1630 | 1935 | 2012 | 1956 | 1724 | 2049 | 1876 | 2241 | 5931 | 3633 | 4096 |
| 1040           | 16          | Watt =<br>W = | 1077 | 1410 | 1739 | 2064 | 2146 | 2086 | 1838 | 2186 | 2002 | 2390 | 3542 | 2912 | 3309 |
| 1105           | 17          | Watt =<br>W = | 1144 | 1498 | 1848 | 2193 | 2280 | 2217 | 1953 | 2322 | 2127 | 2540 | 3764 | 3094 | 3516 |
| 1170           | 18          | Watt =<br>W = | 1211 | 1586 | 1957 | 2322 | 2414 | 2347 | 2068 | 2459 | 2252 | 2689 | 3985 | 3276 | 3722 |
| 1235           | 19          | Watt =<br>W = | 1279 | 1674 | 2065 | 2451 | 2548 | 2478 | 2183 | 2595 | 2377 | 2839 | 4207 |      |      |
| 1300           | 20          | Watt =<br>W = | 1346 | 1762 | 2174 | 2580 | 2682 | 2608 | 2298 | 2732 | 2502 | 2988 | 4428 |      |      |
| 1365           | 21          | Watt =<br>W = | 1413 | 1850 | 2283 | 2709 | 2816 | 2738 | 2413 | 2119 | 2627 | 3137 | 3480 |      |      |
| 1430           | 22          | Watt =<br>W = | 1481 | 1938 | 2391 | 2838 | 2950 | 2869 | 2528 | 2220 | 2752 | 3287 | 3645 |      |      |

| Lunghezza (mm) | N° Elementi |               | 302  | 402  | 502  | 602  | 752  | 902  | 1002 | 1202 | 1502 | 1802 | 2002 | 2202 | 2502 |
|----------------|-------------|---------------|------|------|------|------|------|------|------|------|------|------|------|------|------|
| 1495           | 23          | Watt =<br>W = | 1548 | 2026 | 2500 | 2967 | 3084 | 2999 | 2643 | 2321 | 2877 |      |      |      |      |
| 1560           | 24          | Watt =<br>W = | 1615 | 2114 | 2609 | 3096 | 3218 | 3130 | 2758 | 2422 | 3002 |      |      |      |      |
| 1625           | 25          | Watt =<br>W = | 1682 | 2202 | 2718 | 3225 | 3352 | 3260 | 2872 | 2522 | 3128 |      |      |      |      |
| 1690           | 26          | Watt =<br>W = | 1750 | 2291 | 2826 | 3354 | 3487 | 3390 | 2987 | 2623 | 3253 |      |      |      |      |
| 1755           | 27          | Watt =<br>W = | 1817 | 2379 | 2935 | 3483 | 3621 | 3521 | 3102 | 2724 |      |      |      |      |      |
| 1820           | 28          | Watt =<br>W = | 1884 | 2467 | 3044 | 3612 | 3072 | 2912 | 3217 | 2825 |      |      |      |      |      |



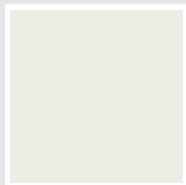
## Colori e finiture

### STANDARD



**Bianco Standard**  
Cod. 01

### CLASSIC



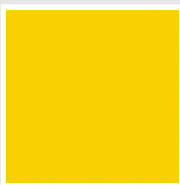
**Bianco Edelweiss**  
Cod. 34



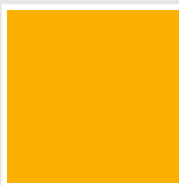
**Avorio - RAL 1013**  
Cod. 02



**Beige Cream**  
Cod. 26



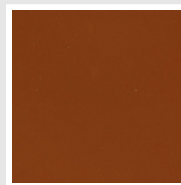
**Giallo - RAL 1021**  
Cod. 04



**Giallo Melone -  
RAL 1028**  
Cod. E7



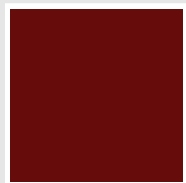
**Arancio - RAL 2004**  
Cod. 17



**Marrone Ruggine -  
RAL 8004**  
Cod. E1



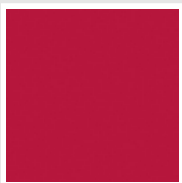
**Marrone - RAL 8017**  
Cod. 09



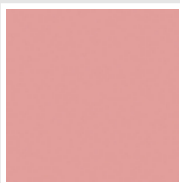
**Amaranto - RAL  
3003**  
Cod. 06



**Rosso - RAL 3000**  
Cod. 05



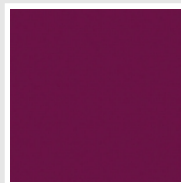
**Rosso Fragola -  
RAL 3018**  
Cod. Y3



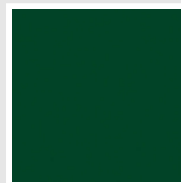
**Rosa - RAL 3015**  
Cod. R2



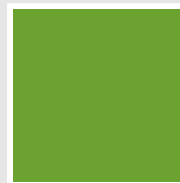
**Lilla Bluastro - RAL  
4005**  
Cod. R3



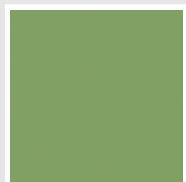
**Porpora Traffico -  
RAL 4006**  
Cod. R6



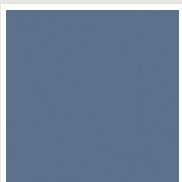
**Verde Bosco - RAL  
6005**  
Cod. 19



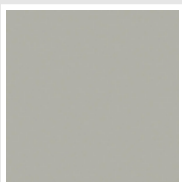
**Verde Erba - RAL  
6018**  
Cod. N3



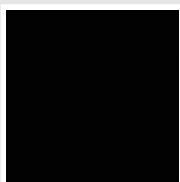
**Verde Salvia - RAL  
6021**  
Cod. E6



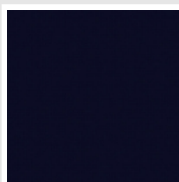
**Blu Pastello - RAL  
5024**  
Cod. G7



**Grigio Manhattan**  
Cod. 03

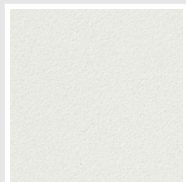


**Nero - RAL 9005**  
Cod. 10

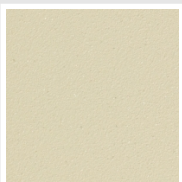


**Deep Blue**  
Cod. 2F

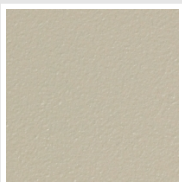
### SPECIAL



**Bianco Perla**  
Cod. 16



**Quartz 1**  
Cod. 1C



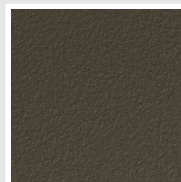
**Sablé**  
Cod. Y4



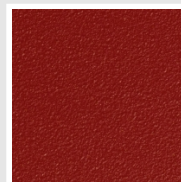
**Quartz 2**  
Cod. 2C



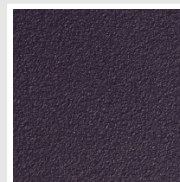
**Sunstone**  
Cod. 2D



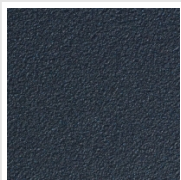
**Bruno Tabacco**  
Cod. 1B



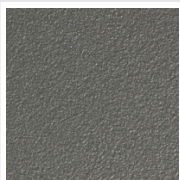
**Flame Red**  
Cod. 7D



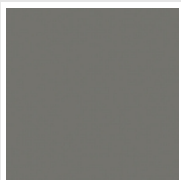
**Purple Blue**  
Cod. 1D



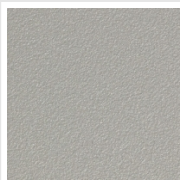
**Azurite 3**  
Cod. 6C



**Grigio Medio**  
Cod. 4D



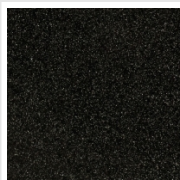
**Grigio Titanio  
Metallizzato - RAL  
9023**  
Cod. L3



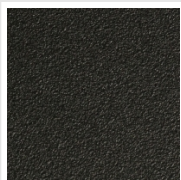
**Grigio Perla**  
Cod. L6



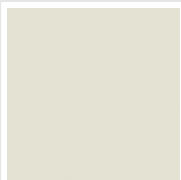
**Nero Grafite**  
Cod. 18



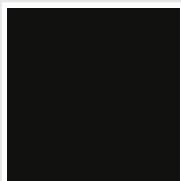
**Grigio Quarzo**  
Cod. 31



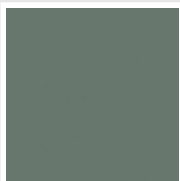
**Nero Satinato**  
Cod. 30



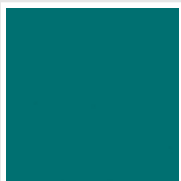
**Bianco Opaco**  
Cod. J8



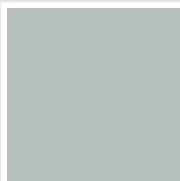
**Nero Opaco**  
Cod. K1



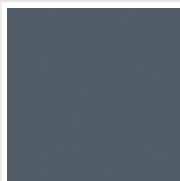
**Agave**  
Cod. 9N



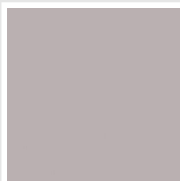
**Blu Baltico**  
Cod. 1P



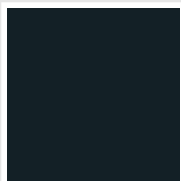
**Ghiaccio**  
Cod. 3P



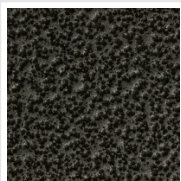
**Blu Colomba  
Opaco - RAL 5014**  
Cod. 4P



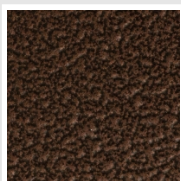
**Grigio Chiaro  
Opaco**  
Cod. 8N



**Grigio Cenere - Ral  
7021**  
Cod. G1

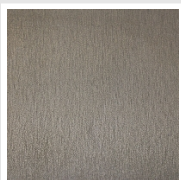


**Grigio Martellato**  
Cod. 32



**Rame Martellato**  
Cod. J4

## FINISHES



**Trattamento Loft**  
Cod. TR

## RAL



**Altri colori RAL (previa fattibilità)**  
Cod. ALTRIRAL

I colori rappresentati in questa cartella non sono da considerarsi impegnativi. I diversi processi tecnologici di verniciatura ed i materiali utilizzati per la realizzazione possono non avere una perfetta corrispondenza cromatica con il prodotto consegnato. L'azienda Irsap si riserva la facoltà di apportare in qualsiasi momento tutte le modifiche necessarie per il miglioramento del prodotto.