

Familia de luminarias de estética orgánica, con pantalla de aluminio y estructura en poliuretano. Luz directa y reflejada.

Acabados: monocolor blanco o negro texturado mate, y bicolor blanco o negro texturado con interior dorado. Cables textiles del mismo tono.

* Tree Series 35 se fabrica solo en acabado monocolor.

A family of lamps with an organic aesthetic, featuring an aluminium shade and a polyurethane structure. Direct and reflected light.


Finishes: monochrome white or textured matte black, and two-toned black or white, with gold interior. Textile cables in the same tone.

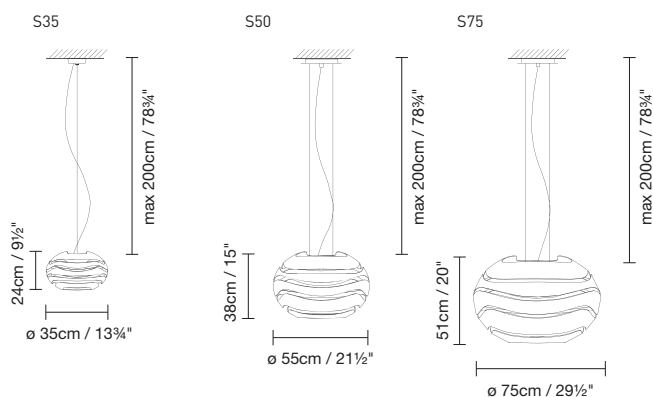
* Tree Series 35 is manufactured only in monochromatic finishes.

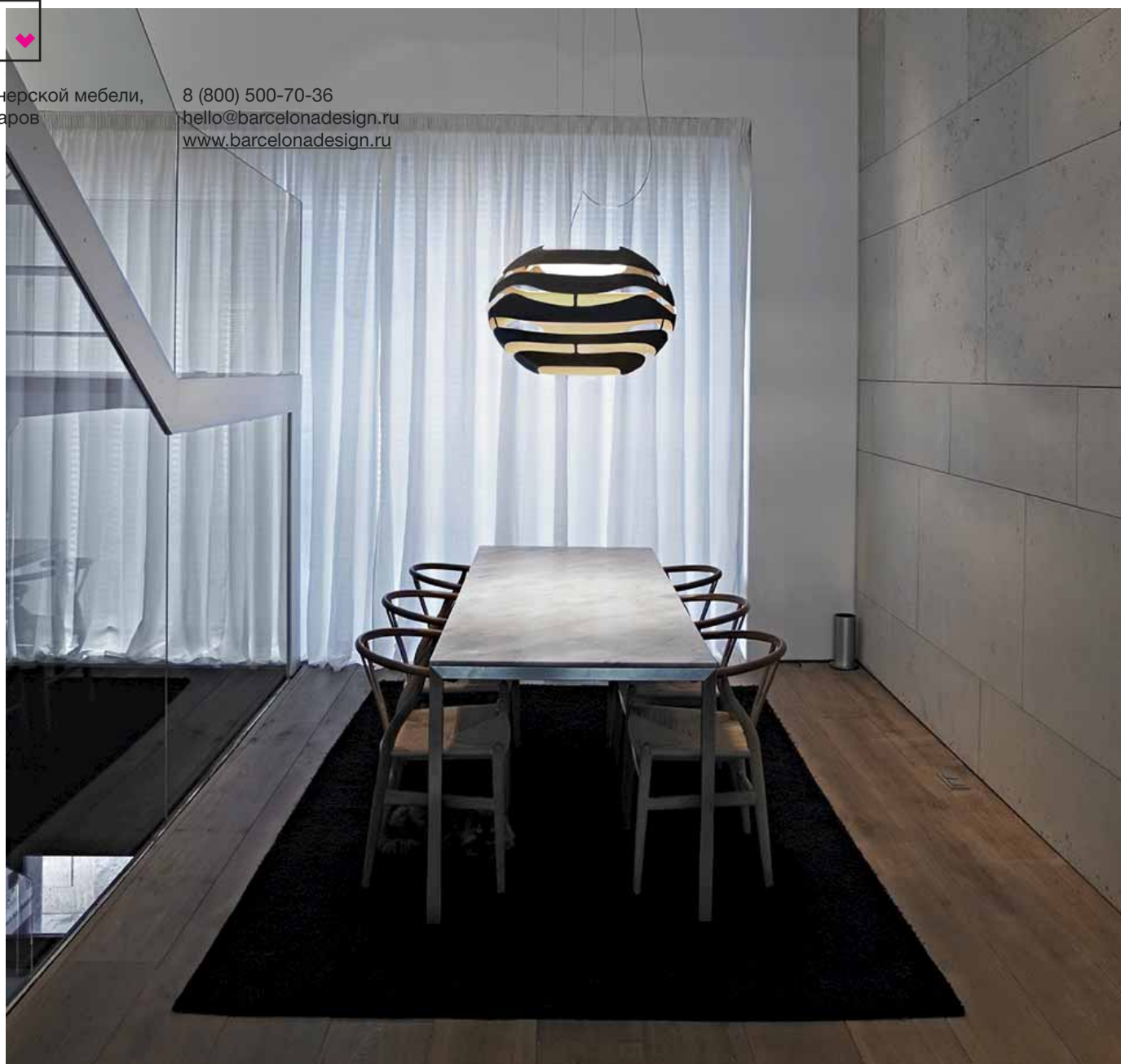
Leuchtenfamilie mit organischer Ästhetik. Aluminiumschirm und Struktur aus Polyurethan. Direktes Licht und Reflektor.

Ausführungen: einheitlich Weiß oder Schwarz, matt texturiert, oder zweifarbig Schwarz und Weiß, texturiert, innen vergoldet. Textilkabel in der jeweils entsprechenden Farbe.

* Tree Series 35 wird nur in einfarbiger Ausführung hergestellt.

 S35: Halóg. ECO 80W (R7s) 78 mm o LED 17,5W 1300 lm 3000K
S50: Halóg. ECO máx. 130W (R7s) o LED 22W 230V 3000K
S75: Halóg. máx. 2 x 130W (R7s) o LED 30W 230V 3000K

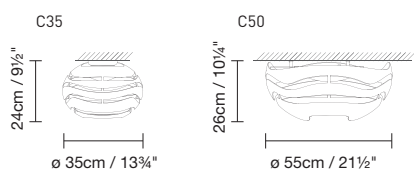




Tree Series

Werner Aisslinger

 C35: Halóg. ECO 80W (R7s) 78 mm
o LED 17,5W 1300 lm 3000K
C50: Halóg. máx. 130W (R7s)
o LED 30W 3000 lm 3000K





Продажа дизайнерской мебели,
света и аксессуаров
по всей России

8 (800) 500-70-36
hello@barcelonadesign.ru
www.barcelonadesign.ru



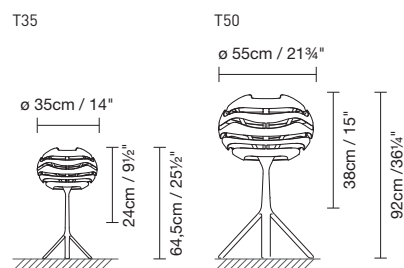


Продажа дизайнерской мебели,
света и аксессуаров
по всей России

8 (800) 500-70-36
hello@barcelonadesign.ru
www.barcelonadesign.ru



T35: Halóg. máx. 60W (G9)
T50: Halóg. ECO máx. 150W (E27)





Продажа дизайнерской мебели,
света и аксессуаров
по всей России

8 (800) 500-70-36
hello@barcelonadesign.ru
www.barcelonadesign.ru



F50: Halóg. ECO máx. 150W (E27)

