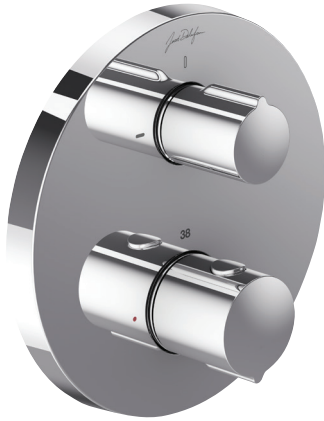


**E75390**



**Collection:** MODULO

**Finish\*:**



CP - Chrome

**Main features:**



### Features

- **DIMENSIONS:** 18 x 18 cm
- **MATERIAL:** Metal
- **NORMS AND REGULATION:** ACS : 14 ACCLY 587

### Consumer benefits

- Equipped with an evacuation system to avoid condensation inside Modulo box
- Ergonomic handles for easy grip
- Diverter on flow-control handle
- Maximum temperature 50°C

- **WEIGHT:** 2.9 kg
- **INSTALLATION TYPE:** Built-in
- Operates with all types of water heaters, minimum capacity 18 kW

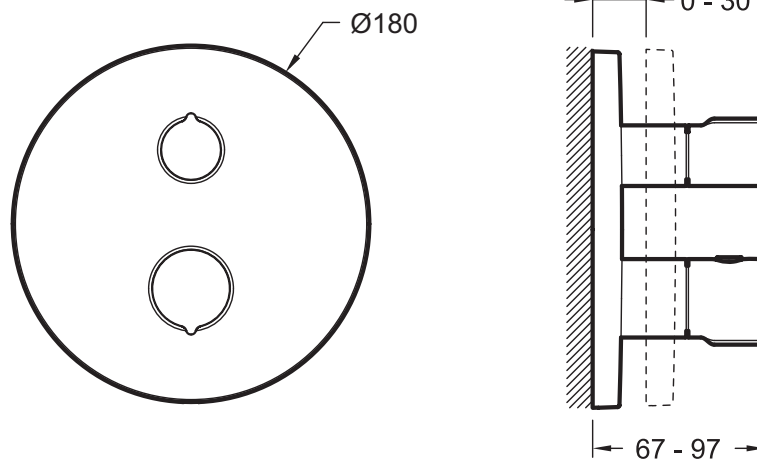
### Installation benefits

- **FAST INSTALLATION:** Fixing screws pre-mounted to cartridge box
- **EASY INSTALLATION:** Thanks to guide notches
- **CONVENIENT MAINTENANCE:** Easy access to build-in body (thermostatic cartridge, non-return valves, etc.)
- **COMPONENTS:** Build-in body, trim and two handles

### Required products

- 98699D: Universal recessed box

### Technical drawing



Product Specification: Thermostatic mixer with stop valve/2-way selector - Round trim. E75390. Collection: MODULO. DIMENSIONS: 18 x 18 cm. WEIGHT: 2.9 kg. MATERIAL: Metal. INSTALLATION TYPE: Built-in. NORMS AND REGULATION: ACS : 14 ACCLY 587. Operates with all types of water heaters, minimum capacity 18 kW.