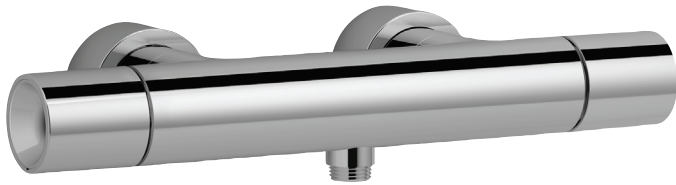
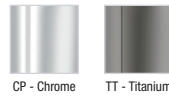


E73164



Collection: COMPOSED

Finish*:



Main features:



Features

- WEIGHT: 3.7 kg
- INSTALLATION TYPE: 2 holes
- TYPE: Single-lever
- CONNECTION: With connectors and wall escutcheons
- HOLE CONFIGURATION: 150 ± 15
- INSTALLATION TYPE: 2 holes
- WARM BODY: Yes
- MECHANISM GUARANTEE: 5 years

- MATERIAL: Brass
- NORMS AND REGULATION: ACS : 14 ACC LY 587
- FLOW RATE: 13 l/mn
- MECHANISM: Cartouche thermostatique
- WATER/ENERGY-SAVING: WATER-SAVING
- SAFETY STOP: 38°C
- NON-RETURN VALVE: Yes
- Non-return valves on supplies

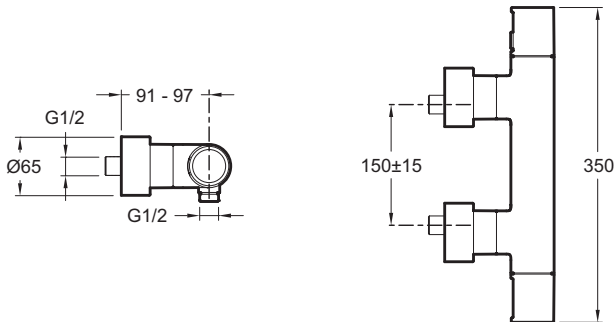
Consumer benefits

- SAFETY: Safety stop at 38°C. Maximum temperature under 50° C.
- COMFORT: Built-in push-in flow stop

Installation benefits

- Spacer kit for renovations
- Connectors and "pop-up" wall escutcheons with nut covers

Technical drawing



Product Specification: Thermostatic single-lever wall-mount shower mixer. E73164. Collection: COMPOSED. WEIGHT: 3.7 kg. MATERIAL: Brass. INSTALLATION TYPE: 2 holes. NORMS AND REGULATION: ACS : 14 ACC LY 587. TYPE: Single-lever. FLOW RATE: 13 l/mn. CONNECTION: With connectors and wall escutcheons. MECHANISM: Cartouche thermostatique. HOLE CONFIGURATION: 150 ± 15. WATER/ENERGY-SAVING: WATER-SAVING. INSTALLATION TYPE: 2 holes. SAFETY STOP: 38°C. WARM BODY: Yes. NON-RETURN VALVE: Yes. MECHANISM GUARANTEE: 5 years. Non-return valves on supplies.

**Due to possible variations in computer and printer calibrations, technical factors and certain finish characteristics, the colors you see may not accurately portray the actual colors and are provided as a guide only.*