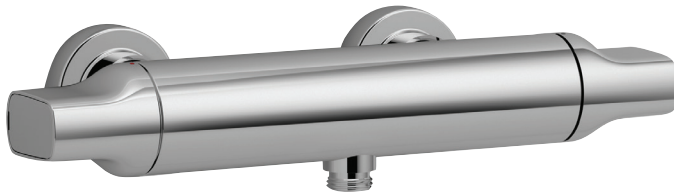


E72352



Collection: ALEO

Finish*:



CP - Chrome

Main features:



Features

- **WEIGHT:** 2.7 kg
- **INSTALLATION TYPE:** 2 holes
- **TYPE:** Single-lever
- **CONNECTION:** With connectors and wall escutcheons
- **HOLE CONFIGURATION:** 150 ± 15
- **INSTALLATION TYPE:** 2 holes
- **WARM BODY:** Yes
- **MECHANISM GUARANTEE:** 5 years
- On temperature handle: Safety stop at 40°
- Non-return valve on supply hoses
- **MATERIAL:** Metal
- **NORMS AND REGULATION:** ACS (Certificate of Sanitary Compliance): 10 ACC LY 113
- **FLOW RATE:** 14 l/min
- **MECHANISM:** Expanding wax cartridge
- **WATER/ENERGY-SAVING:** WATER-SAVING
- **SAFETY STOP:** 37°C
- **NON-RETURN VALVE:** Yes
- On flow handle: Eco stop to increase water savings
- Maximum temperature limited to 50°
- 5-year guarantee

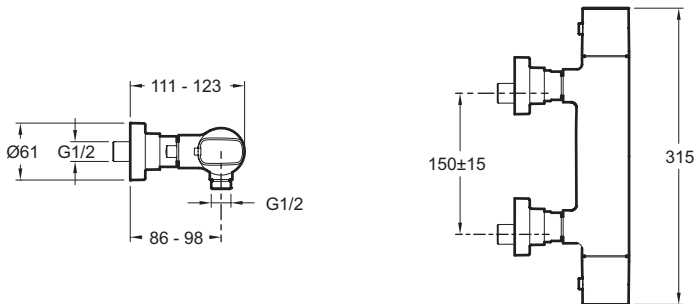
Consumer benefits

- **SAFETY:** Maximum temperature set at 50°
- On flow handle: Eco stop to help save water

Installation benefits

- **EASE OF INSTALLATION:** Connectors and wall escutcheons

Technical drawing



Product Specification: Thermostatic single-lever wall-mount shower mixer. E72352. Collection: ALEO. WEIGHT: 2.7 kg. MATERIAL: Metal. INSTALLATION TYPE: 2 holes. NORMS AND REGULATION: ACS (Certificate of Sanitary Compliance): 10 ACC LY 113. TYPE: Single-lever. FLOW RATE: 14 l/min. CONNECTION: With connectors and wall escutcheons. MECHANISM: Expanding wax cartridge. HOLE CONFIGURATION: 150 ± 15. WATER/ENERGY-SAVING: WATER-SAVING. INSTALLATION TYPE: 2 holes. SAFETY STOP: 37°C. WARM BODY: Yes. NON-RETURN VALVE: Yes. MECHANISM GUARANTEE: 5 years. On flow handle: Eco stop to increase water savings. On temperature handle: Safety stop at 40°. Maximum temperature limited to 50°. Non-return valve on supply hoses. 5-year guarantee.