



IB RUBINETTI

Collection

BOLD

Article

B1800

Description

Thermostatic shower column with shower kit



Box Dimensions

800 x 500 x 180 mm

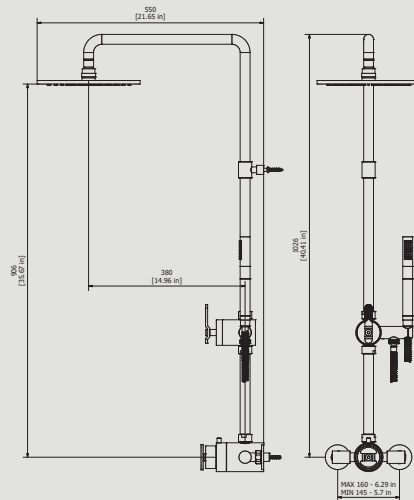
Weight

12.1 kg

Finishes

- **CC**
CHROME
- **CF**
BLACK CHROME
- **OO**
GOLD
- **BB**
ANTIQUÉ BRONZE
- **SS**
BRUSHED NICKEL
- **CS**
BRUSHED BLACK CHROME
- **BO**
MATT WHITE
- **NP**
MATT BLACK
- **IS**
BRUSHED PALE GOLD
- **OS**
BRUSHED GOLD
- **II**
PALE GOLD
- **RR**
ANTIQUÉ COPPER
- **RS**
ROSE GOLD
- **ON**
NATURAL BRASS
- **SR**
BRUSHED ROSE GOLD
- **PL**
PLATINUM

Dimensions



Cartridge

Thermostatic cartridge

Threaded fitting

G1/2" male

Aerator

Flow Rate (+/-10%)

**1 BAR
10.7 l/min**

**2 BAR
15 l/min**

**3 BAR
18.5 l/min**

Production

Main body is a machined from a solid pieces

Material

**BRASS
According to CuZn39Pb3 (CW614N)
Max Lead content: 2.5%**

IB RUBINETTERIE s.p.a
via dei Pianotti 3/5
25068 Sarezzo (BS) - Italy -

T. +39 030 802101
F. +39 030 803097
info@ibrubinetterie.it

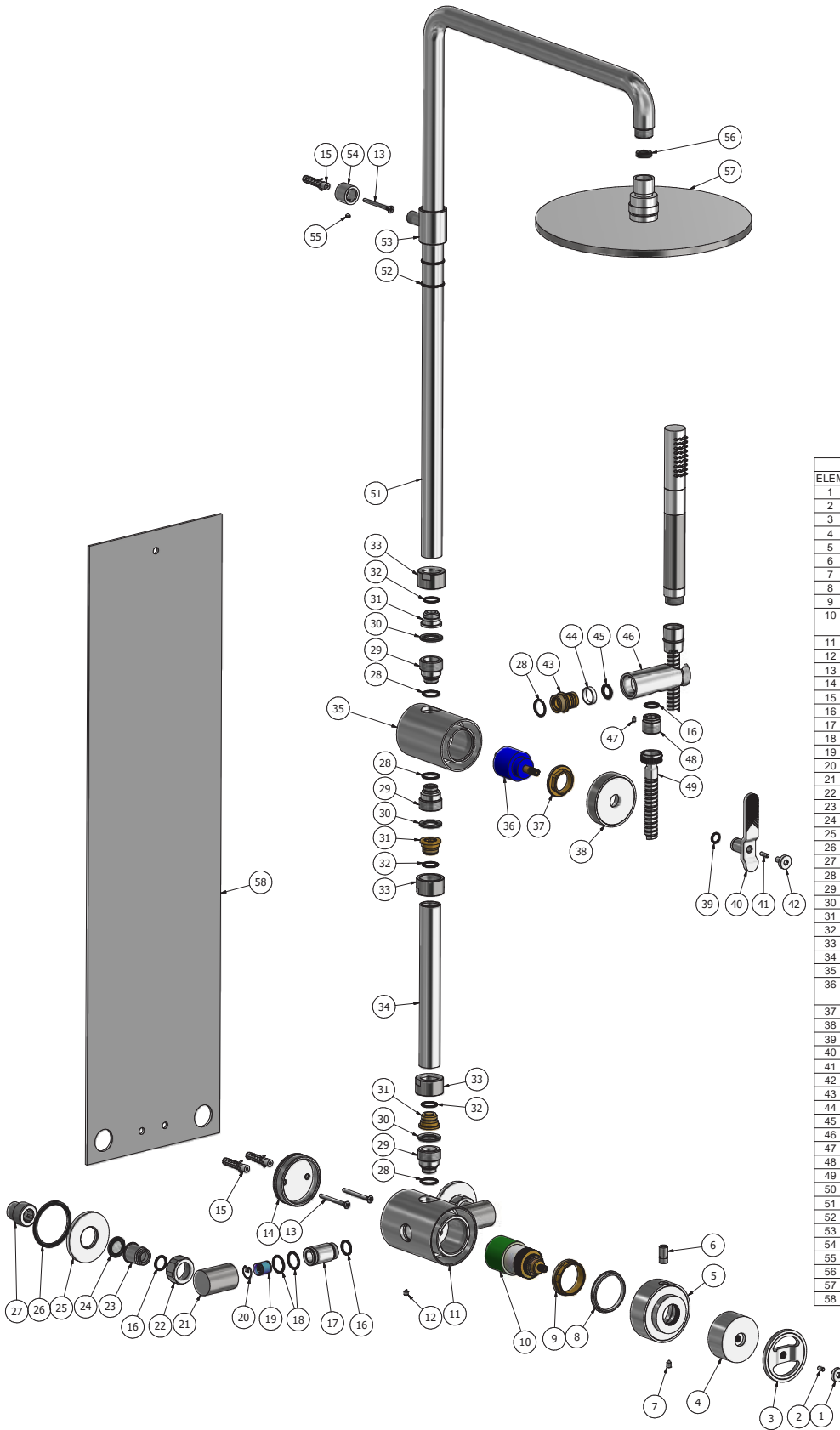
P.IVA 01785230986
capitale sociale
€420.000,00 i.v.

WWW.IBRUBINETTI.IT





IB RUBINETTI



| Parts list | | | |
|------------|-----------|---|----|
| ELEM | CODE | DESCRIPTION | QT |
| 1 | AC0015356 | Screw Ø16 M4 H10 | 1 |
| 2 | AQ0006921 | Grubscrew M4x8 flat point | 1 |
| 3 | CC0002282 | Wheel Ø62 H15 8x20 | 1 |
| 4 | AC0015357 | Termo's Handle Ø55 H25 | 1 |
| 5 | AC0015358 | Capacity handle Ø70 H32 | 1 |
| 6 | AC0012660 | Rod M10 H20 | 1 |
| 7 | AQ0010869 | Grubscrew M5x8 cone point | 1 |
| 8 | AQ0013619 | With POM ring Ø49.9 H5 | 1 |
| 9 | AS0011617 | Cartridge fixing nut W42x19 H12 | 1 |
| 10 | AQ0015535 | Thermostatic cartridge Hydrostat mini coaxial with stop | 1 |
| 11 | AC0012668 | Thermostatic body Ø70 H90 42x19 | 1 |
| 12 | AQ0014670 | Grubscrew M5x6 cone point | 1 |
| 13 | AQ0010626 | Inox screw Ø4 L50 | 3 |
| 14 | AC0012669 | Wall fixing insert Ø59.8 Ø52 H15 | 1 |
| 15 | AQ0010660 | Dowel fisher Ø8 L40 | 3 |
| 16 | AQ0001390 | OR 14x2 NBR 70 SH | 5 |
| 17 | AC0012708 | Shower connection piece M19x1 H37 | 2 |
| 18 | AQ0009841 | OR 17x2 NBR 70 SH | 4 |
| 19 | AQ0009090 | Not return valve Ø14 (31.4114.00001) | 2 |
| 20 | AQ0009678 | Elastic ring AISI 302 | 2 |
| 21 | AC0012710 | Connection piece M19x1 Ø30 H43 | 2 |
| 22 | AC0000710 | Fixing nut G3/4" H14 CH30 | 2 |
| 23 | AC0012709 | Connection piece M19x1 Ø24 H25.5 | 2 |
| 24 | AQ0010373 | Rubber packing 3/4" H2 with filter | 2 |
| 25 | AS0012742 | Rosette Ø60 G3/4" H5 | 2 |
| 26 | AQ0011028 | Flat gasket Ø55 Ø47 H2 | 2 |
| 27 | AC0012657 | Reduction G1/2" M G3/4" M H28 | 2 |
| 28 | AQ0004630 | OR 17.16x1.78 NBR 70 SH | 4 |
| 29 | AC0010038 | Shower connection piece M16x1 G3/4" | 3 |
| 30 | AQ0001600 | Gasket 24x16x2 G3/4" | 3 |
| 31 | AC0001931 | Insert M18x1.5 sin | 3 |
| 32 | AQ0004600 | OR 15.6x1.78 NBR 70 SH | 3 |
| 33 | AC0012659 | Nut Ø32 H18 G3/4" knurl | 3 |
| 34 | AC0012653 | Pipe Ø24 M18x1.5 sin H195 | 1 |
| 35 | AC0012670 | Diverter 2 ways Ø62 H80 | 1 |
| 36 | AQ0013416 | Ceramic cartridge diverter 2 way with stop KDZ 35 A | 1 |
| 37 | AQ0001040 | Cartridge ring nut M37x1.5 H9 | 1 |
| 38 | AC0012671 | Cover Ø62 H20 M37x1.5 | 1 |
| 39 | AQ0004180 | OR 9.25x1.78 NBR 70 SH | 1 |
| 40 | CC0002278 | Handle 18 L94 H30.5 8x20 | 1 |
| 41 | AQ0014996 | Grubscrew M4x12 flat point | 1 |
| 42 | AC0015171 | Screw Ø16 M4 H16 | 1 |
| 43 | AS0011282 | Connection piece for spout-out G1/2" L27.7 | 1 |
| 44 | AQ0010435 | Teflon ring Ø19.9 x 5 | 1 |
| 45 | AQ0001360 | OR 11.91x2.62 NBR 70 SH | 1 |
| 46 | AC0012661 | Hand shower support Ø29.8 H81 knurled | 1 |
| 47 | AQ0010444 | Grubscrew M4x6 cone point | 1 |
| 48 | AC0011892 | Shower connection piece G1/2" M19x1 H19 | 1 |
| 49 | AQ0003120 | Inox hose G1/2" F G1/2" F cone | 1 |
| 50 | AQ0015375 | Hand shower knurled | 1 |
| 51 | AC0012652 | Pipe Ø24 H672 L404 M18x1.5 sx G1/2" M | 1 |
| 52 | AQ0010972 | OR 23x2 NBR 70 SH | 2 |
| 53 | AC0012665 | Shower pipe support welded Ø32 H40 | 1 |
| 54 | AC0012658 | Wall insert fixing Ø22 H17 | 1 |
| 55 | AQ0010117 | Grubscrew M5x4 cone point | 1 |
| 56 | AQ0014583 | Rubber packing G1/2" H4 | 1 |
| 57 | AQ0015376 | Brass showerhead Ø250 knurled | 1 |
| 58 | AQ0015248 | Template 150x180x750 | 1 |

WARRANTY

All IB Rubinetterie SpA products are warranted for 10 years from the date of purchase, for the following cases:

- Defects of casting, porosity and chrome plating.
- Operating defects caused by incorrect fabrication.

The warranty provides for repair or replacement of products with fabrication defects recognized by our technical office. There is no other type of compensation anche the merchandise must be returned FOB our warehouse. The warranty only cover surface defects (scatches, dings, etc.) on fitting that have not been installed and used, returned in its original packaging with all components. O-ring, gasket seals and components subject to wear proportional to use are warranted for 2 years.

The warranty is void in the following cases:

Error installing and putting the product into service.

Deterioration of finisched surfaces due to use of cleaning products containing acids or abrasive substances. Deterioration of surface with finishes other than chrome plating. Their durability is, in fact, dependent on the user's care and gentleness of use.

Deterioration of the fitting due incorrect installation.

Improper repairs and maintenance performed without the company's prior authorization.

The warranty from IB Rubinetterie SpA is not renewable.

Cleaning

We recommended cleaning the finish surfaces with water and soap, using a soft cloth.

Do not use detergents that cointain hydrochloric acid or abrasive substances.

