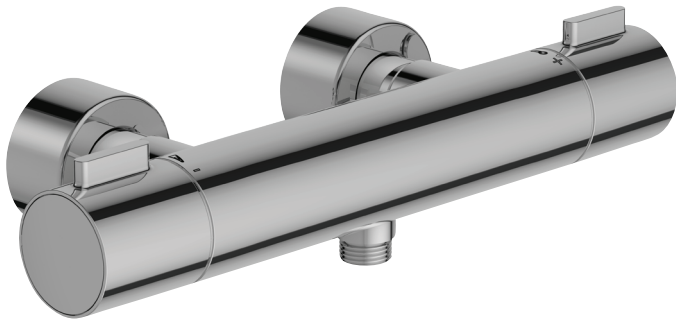


CUFF - Thermostatic single-lever wall-mount shower mixer

Jacob Delafon
PARIS

E37035



Collection: CUFF

Finish*:



CP - Chrome

Main features:



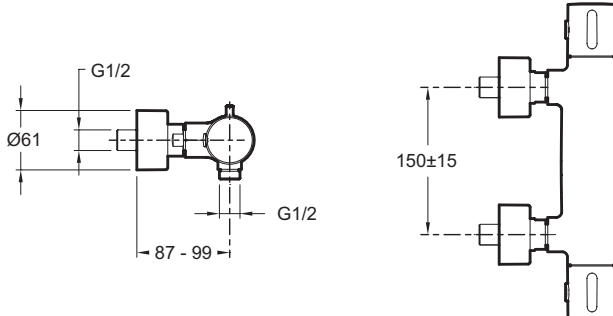
Features

- WEIGHT: 2.8 kg
- INSTALLATION TYPE: 2 holes
- TYPE: Single-lever
- MECHANISM: Expanding wax cartridge
- WATER/ENERGY-SAVING: WATER-SAVING
- SAFETY STOP: 38°C
- MECHANISM GUARANTEE: 5 years
- Integral anti-scale aerator
- MATERIAL: Metal
- NORMS AND REGULATION: ACS (Certificate of Sanitary Compliance): 10 ACC LY 102
- CONNECTION: With connectors and wall escutcheons
- HOLE CONFIGURATION: 150 ± 15
- INSTALLATION TYPE: 2 holes
- WARM BODY: Yes
- On temperature handle: Safety stop at 38°
- 5-year guarantee

Consumer benefits

- SAFETY: Maximum temperature set at 50°

Technical drawing



Product Specification: Thermostatic single-lever wall-mount shower mixer. E37035. Collection: CUFF. WEIGHT: 2.8 kg. MATERIAL: Metal. INSTALLATION TYPE: 2 holes. NORMS AND REGULATION: ACS (Certificate of Sanitary Compliance): 10 ACC LY 102. TYPE: Single-lever. CONNECTION: With connectors and wall escutcheons. MECHANISM: Expanding wax cartridge. HOLE CONFIGURATION: 150 ± 15. WATER/ENERGY-SAVING: WATER-SAVING. INSTALLATION TYPE: 2 holes. SAFETY STOP: 38°C. WARM BODY: Yes. MECHANISM GUARANTEE: 5 years. On temperature handle: Safety stop at 38°. Integral anti-scale aerator. 5-year guarantee.

*Due to possible variations in computer and printer calibrations, technical factors and certain finish characteristics, the colors you see may not accurately portray the actual colors and are provided as a guide only.