

ADVANCED

Javier Pastor

Sillón Batyline Senso “Nido” / armchair Batyline Senso

C251B

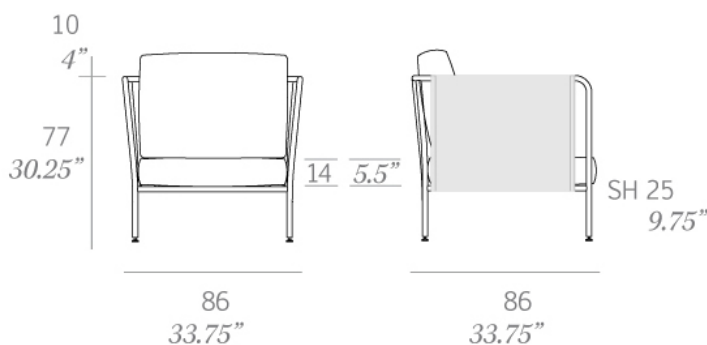
OUT



Colección fabricada en tubo de acero, acabada en pintura bicapa zinc y polvo de poliéster. Tres versiones: acabado en varilla maciza de acero de 6 mm de sección, acabado tejido y un nuevo acabado en Batyline® Senso. Para los modelos tejidos se utiliza cuerda de poliéster trenzada de alta resistencia de 24 mm de sección. Posibilidad de realizar una gran variedad de composiciones de asientos debido a la modularidad de sus elementos.

Collection made of steel tube, and finished with a double layer of zinc and polyester powder. Three versions: finished in solid steel rod, 6 mm/0.24" thick, hand-woven finish using braided rope made of high resistance polyester, 24 mm/0.94" thick and a new Batyline® Senso finish. Possibility of creating a wide variety of layouts due to the modularity of its elements.

Medidas / Dimensions	86 x 86 x 77 cm 33.75" x 33.75" x 30.25"
Peso / Weight	17 kg / 37.5 lb
Volumen / Volume	0.57 m ³ / 20.13 ft ³



Estructuras de acero / steel frame



100 white



101 black



107 brown

Batyline® Senso



5574 black



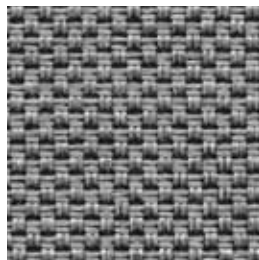
5571 taupe

Serie 2 - Confección / cushions

Duo Outdoor



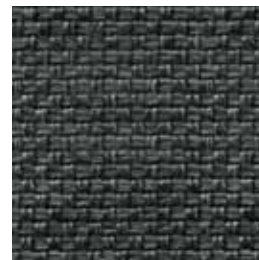
Duo 54



Duo 51



Duo 14



Duo 53



Duo 55



Duo 01

Serie 4 - Confección / cushions

Silvertex™



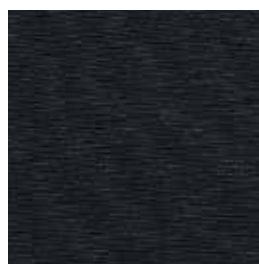
Silvertex Ice



Silvertex Taupe



Silvertex Meteor



Silvertex Carbon

Zander®



Zander Pure White



Zander Auster

Serie 1 - Confección / cushions

Tempotest®



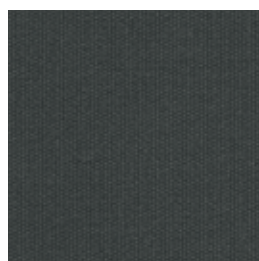
Marine C



Marine BG



Marine GC



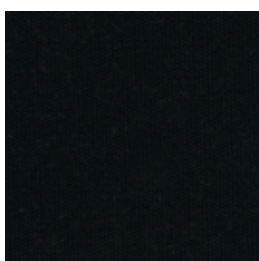
Marine G



Marine GN



Marine M



Marine NE



Marine MO



Marine A



Marine VN

Serie 2 - Confección / cushions

Tempotest®



Marivent 23



Marivent 40



Marivent 42



Marivent 44



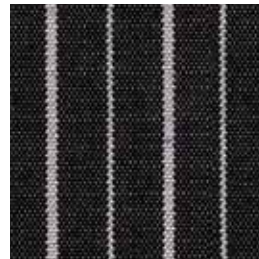
Marivent 24



Marivent 41



Marivent 43



Marivent 45