

Arc Wall Bar Installation Instructions

Parts Included



Cleaning of Parts

For surface cleaning of parts, use water and soap. Dry with a soft cloth.

Note: Any other cleaning product not specifically designed for cleaning plastic or metal surfaces may damage the finish.

Periodically it is recommended to soak the hand shower in a 50/50 mix of warm water and vinegar for 15 minutes to remove deposits.

Limited Lifetime Warranty

Delta Faucet warrants to the owner of this product that the product is free from defects in material or workmanship for the period stated above from the date of purchase. Return it to the dealer where purchased or return the product, postage prepaid (we recommend United Parcel Service) to Master Plumber, 418 Henry Street, Brantford, ON N3T 5N9. We will repair or replace, at our discretion, at no charge. This warranty gives you specific legal rights. You may also have other rights that vary where you reside.

If this product malfunctions or becomes damaged, stop use and return it to Master Plumber for examination and/or repair.

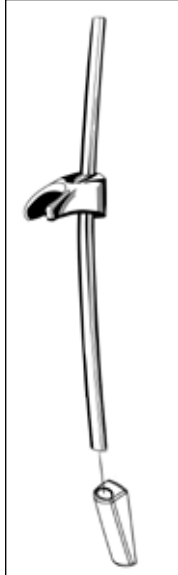
For assistance with problems with installation:

Call toll free 1-800-421-0001, 8:00 a.m. to 6:00 p.m. Eastern Standard Time Monday - Friday.

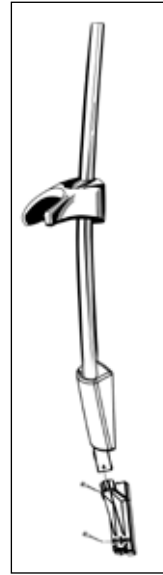
1. Position the wall bar on the wall.



Select a convenient height based on your family's needs. Remember to leave enough slack for the hose when the hand shower is in the extreme up position.

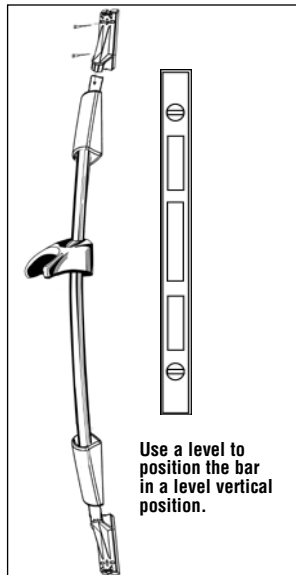


Slide the lower bracket cover onto the bar.

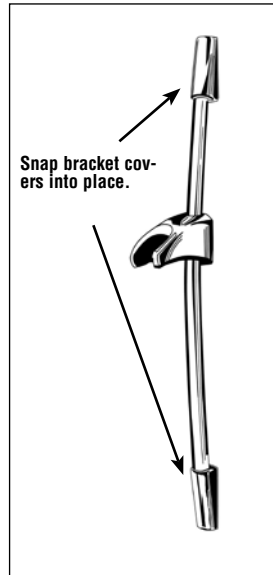


Push the bracket cover up the bar and out of the way. Place a wall bracket into the end of the bar and mark the drill holes.

3. Final installation of wall bar.

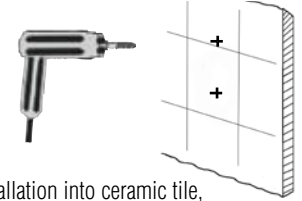


Slide the upper bracket cover onto the bar and mount bar on lower wall bracket. Using a level, position the bar in a level vertical position and mark the drill holes. Move the bar slightly out of the way and drill the holes. Insert anchors or toggle bolts and, with the wall bar attached, position the wall bracket over the holes. Insert and tighten the screws.

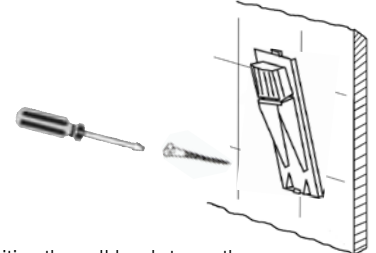


Slide each bracket cover over its respective wall bracket and snap them into place.

2. Drill holes for lower bracket.



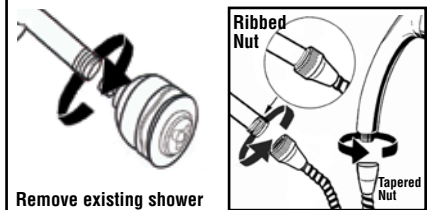
- For installation into ceramic tile, use a carbide masonry bit or tile/glass bit to drill two 3/16" holes through the tile and drywall. If hitting a wood stud, then use 3/16" wood bit to complete; drill 1" depth in total. Insert anchors into the holes.
- For fiberglass/acrylic surfaces, use toggle bolts (not included).
- For flat plastic surface, drill two 3/16" holes and insert anchors into the holes.



Position the wall bracket over the holes, insert and tighten the screws.

Do not snap the bracket cover into place yet.

4. Install hand shower.



Remove existing shower head from shower arm.

Connect to shower arm



To mount the hand shower to the arc bar, simply insert the hand shower into the slide mechanism.

Your shower is equipped with a vacuum breaker, permanently installed in the end of the hose with a ribbed nut.

Do not try to tighten or remove the vacuum breaker, this could damage the mechanism.

Hand tighten the ribbed nut onto the shower arm.

Remove the yellow tape which indicates the end of the hose to screw on to the hand shower.

Firmly seat the washer into the tapered end of the hose. Hand tighten tapered end of hose directly to hand shower.