



Thalassa

Insulating and fiberglass reinforced polyester enclosures



se.com/enclosures

Life Is On

Schneider
Electric

Ensuring everything will be okay in our daily lives



Enclosures are everywhere around us and play a crucial role.

Street lighting, telecommunications, traffic control, motorways, airports, rail networks, harbors, hoisting, solar plants, water treatments plants, electric vehicles, almost all electrical infrastructures and also industrial applications are linked to electrical enclosures.

All these applications need solutions that improve performance and safety.

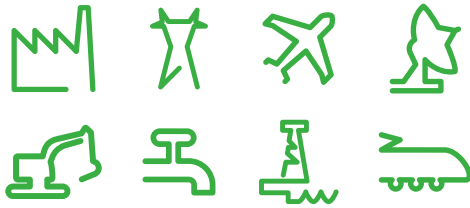
Thalassa fiberglass reinforced polyester enclosures have been designed to offer protection no matter the challenges of the environment.

Protection against

- Electric shocks
- Corrosion
- Harsh environments
- Impacts
- Vandalism
- Temperatures
- Chemical agents
- UV radiation

Material properties

- Low-maintenance
- Halogen-free
- Corrosion-less machining
- Easy to repair
- Light
- Robust
- Easy to transport
- Easy to install
- Easy to use
- Self-extinguishing



Whether the equipment you want to protect is exposed to direct sunlight, rain, saline mist, extreme temperatures or chemicals. Thalassa enclosures are the best option.

Full insulation improves people's safety not only in the industry but also in streets, parks and other public places accessible to people.

Polyester is equally impressive in any indoor environment where electric and electronic components are constantly exposed to dust, oils splash or impacts.

Compliance with international standards



Digital Rules: The fast enclosure component selector available on se.com/enclosures



Product info available 24/7 flashing the QR code on the product label

It applies depending on the family



The best choice for harsh environments

Thalassa is a complete solution ranging from modular boxes to wall mounting, floor standing and outdoor heavy-duty enclosures. All of them are ideal for harsh environments due to the excellent properties of the fiberglass reinforced polyester molded by hot compression.



Thalassa TBS-TBP

Insulating industrial boxes



Thalassa PLA

Polyester floor standing enclosures



Thalassa PLS

Insulating polyester and polycarbonate modular boxes



Thalassa PLD

Polyester DIN enclosures



Thalassa PLM

Polyester wall mounting enclosures



Heavy Duty PHD

Polyester wall mounting and floor standing outdoor enclosures



- No electric risk due to Class II insulation
- Corrosion resistance
- Weather resistance (UV, atmosphere agents, temperatures)
- Water and dust tight
- Robustness, impact resistance
- Anti vandalism
- Fire resistance
- Long life
- Lightness
- Protection against chemical agents
- Halogen-free



Widest range in standard and customized protection

Insulating and polyester enclosure ranges: technical characteristics



Thalassa TBS-TBP

Insulating industrial boxes

- TBS body made of ABS for conventional applications with usual constrains
- TBP body made of Polycarbonate for external UV applications
- 2 types of covers: high or low. Transparent (PC) or opaque (ABS for TBS, PC for TBP)
- More than 70 options
Height: from 74 up to 341 mm
Width: from 74 up to 291 mm
Depth: from 54 up to 168 mm
RAL7035
Class II
- Certifications: IEC62208, UL508A (for TBP range), CE, REACH, RoHs
- Complete range of accessories



Thalassa PLS

Insulating modular boxes

- Body made of fiberglass reinforced polyester
- 3 types of covers: transparent polycarbonate, opaque polycarbonate and polyester
- 4 modular dimensions: From 180x270x180mm up to 540x720x230mm
- RAL7035
- Class II
- IP66 / IK09
- Self-extinguishing: 960° test withstanding
- Certifications: UL508A, IEC62208, CE, REACH, RoHs
- Inserts at the rear to fix plates or supports
- Locking by 4,6 or 8 screws according to dimensions
- Modular distribution version supplied with chassis
- Complete range of accessories



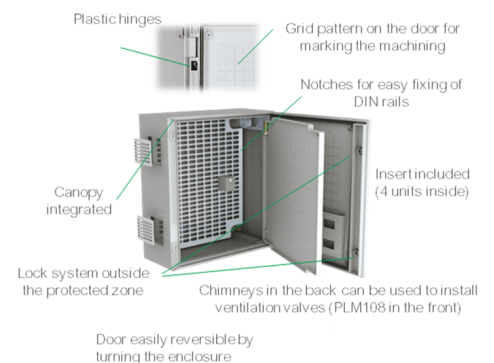
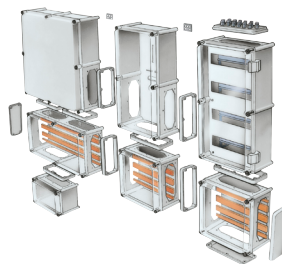
Thalassa PLM

Polyester wall mounting enclosures

- Monoblock body
- 40 options, 8 dimensions
Height: from 308 up to 1056mm
Width: from 215 up to 852mm
Depth: from 160 up to 350mm
**PLM32 made of ABS/PC*
- RAL7035
- Class II
- IP66
- IK10 plain door - IK08 glazed door
- Self-extinguishing: 960° test withstanding
- Certifications: UL 508A, IEC62208, Marine, CE, REACH, RoHs
- Joinable enclosures
- 1 or 2 locks according to size
- Complete range of accessories



PLS modular assemble



Smart design to suit to market needs

Polyester enclosure ranges: technical characteristics



Thalassa PLA

Polyester floor-standing enclosures

- 230 different options, 4 versions
PLA (completely closed)
PLAT (with ventilated canopy)
PLAZ (with open bottom part)
PLAZT (with ventilated canopy + open bottom part)
- 46 dimensions
Height: from 500 up to 2000mm
Width: from 500 up to 1250mm
Depth: 320, 420, and 620mm
- RAL7035
- Class II
- IP65/54/44 depending on the version
- IK10 plain door - IK08 glazed door
- Self-extinguishing: 960° test withstanding
- Certifications: UL 508A (PLA version), IEC62208, Marine (PLA version), CE, REACH, RoHs
- Joinable enclosures
- Door opening
to 120° PLA, PLAT, PLAZ
to 180° PLAZT
- 1 or 2 doors based on the size
- Handle lock system
- Complete range of accessories



Thalassa PLD

Polyester DIN enclosures

- Four options: DIN 00, DIN 0, DIN 1, DIN 2 (2 doors)
Height: 850mm
Width: from 465 up to 1115mm
Depth: 320 mm
- RAL7035
- Class II
- IP43 (Kit IP54 available)
- IK10
- Certifications: CE, REACH, RoHs
- Handle with lever and 1242 E cylindrical safety lock
- Exclusive accessories available

Thalassa ranges can be configured according to your needs

Four different services available:



Assemble to order



Mounting of standard accessories



Painting



Machining



Spacial.conf

Configuration and quotation of enclosures



Nieuwpoort Belgium

The biggest marina in Northern Europe

Installation of Thalassa PLA enclosures equipped with mounting plate, canopy, thermostats and heaters to achieve the remote management and administration of the technical installation of the marina.

Thalassa heavy duty is ready for the next level

Polyester enclosure ranges: technical characteristics



Thalassa PHD

Polyester heavy-duty enclosures

- WM and FS made by assembling parts to meet the standard EN 439-5
- 32 different options
Height: from 500 up to 2000mm
Width: from 500mm up to 1250mm
Depth: 320, 420, and 620mm
- RAL7035
- Class II
- IP65 (WM version) / IP55 (FS version)
- IK10
- Sharp edge object resistance
- Corrosion metallic parts C4H – ISO12.944
- Fire resistance EN 1794-2
- Space for electronics IEC 60297-3-100
- Anti-posting
- Certifications: UL 508A, IEC62208, IEC61439-5 (Infrastructure), IEC61969-3 (Outdoor environment)
- Joinable enclosures
- Lifting possible from top with eyebolt accessory
- Plain or ribbed door available
- Exclusive heavy-duty accessories

Anti-burglary accessory in accordance with ENV 1627-1630:2011 Class II is available.

It keeps the Insulation Class II according to IEC 61439-1:2011.

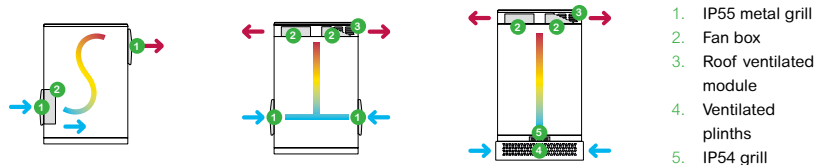


Heavy duty enclosures come equipped with:

- HD canopy
- HD plinth (FS)
- Door retainer (FS)
- Document holder
- Aluminium cable gland plate
- Handle with key, lock hole

Three types of ventilation architecture

Designed to solve thermal management difficulties in both public and private outdoor installations



- Maximum heat dissipation up to 1000W.
- Easy access to mount-dismount FanBox.
- High capacity of extraction calories up to 1500W.
- Low noise with 1 fan: 55dB.
- Saved installation area.
- Easy to manage entry cable.
- High capacity of extraction calories up to 1500W.
- Low noise with 1 fan: 55dB.
- Saved installation area.
- Air flow in vertical axis.



ProClima

Thermal calculation software

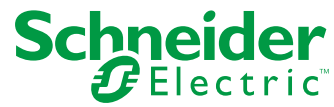
Buenos Aires, Argentina

Paseo del Bajo Highway

Installation of Thalassa PHD enclosures equipped with ClimaSys I-line system, heaters and antiburglary accessories for the lighting system of the highway (1.000V). The enclosures were installed in the outdoor zones of the 7.1 km route that connects the north with the south of the city.



Life Is On



se.com/enclosures

Schneider Electric Industries SAS
35, rue Joseph Monier - CS 30323
F92506 Rueil-Malmaison Cedex