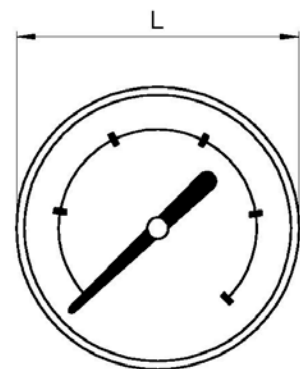
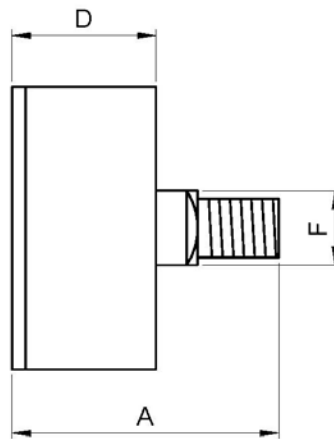


Art.: 3821

Manómetro Ø53, salida posterior, rosca BSP / Pressure gauge Ø53, back connection, BSP thread

| Características | Features |
|--|---|
| 1. Tamaño Ø53. | 1. Size Ø53. |
| 2. Manómetro con conexión posterior, rosca macho (BSP) G 1/4" según ISO 228/1. | 2. Pressure gauge with back connection, male thread (BSP) G 1/4" according ISO 228/1. |
| 3. Caja en ABS color negro. | 3. Case in black ABS. |
| 4. Tubo "Bourdon" y racor en latón según UNE-EN 12165. | 4. Tube "Bourdon" and brass fitting connection according UNE-EN 12165. |
| 5. Dial blanco: escala en negro (bar) y roja (psi). | 5. White dial: black scale (bar) and red (psi). |
| 6. Visor en Policarbonato. | 6. Polycarbonate viewer. |
| 7. Clase de precisión: cl. 2,5. | 7. Class precision: cl. 2,5. |
| 8. Graduaciones disponibles de 0 a 2,5 - 4 - 6 - 10 - 16 - 25 bar. | 8. Scale available from 0 to 2,5 - 4 - 6 - 10 - 16 - 25 bar. |
| 9. Temperatura de trabajo: de -20°C a 60°C. | 9. Working temperature: from -20°C to 60°C. |



| Ref. | Escala / Scale | | Dimensiones / Dimensions (mm) | | | | Peso / Weight (Kg) |
|----------|----------------|---------|-------------------------------|----|----|-------|--------------------|
| | bar | psi | A | L | D | F | |
| 3821 002 | 0 - 2,5 | 0 - 40 | 47 | 53 | 27 | 14x14 | 0,068 |
| 3821 004 | 0 - 4 | 0 - 60 | 47 | 53 | 27 | 14x14 | 0,068 |
| 3821 006 | 0 - 6 | 0 - 90 | 47 | 53 | 27 | 14x14 | 0,068 |
| 3821 010 | 0 - 10 | 0 - 150 | 47 | 53 | 27 | 14x14 | 0,068 |
| 3821 016 | 0 - 16 | 0 - 240 | 47 | 53 | 27 | 14x14 | 0,068 |
| 3821 025 | 0 - 25 | 0 - 400 | 47 | 53 | 27 | 14x14 | 0,068 |