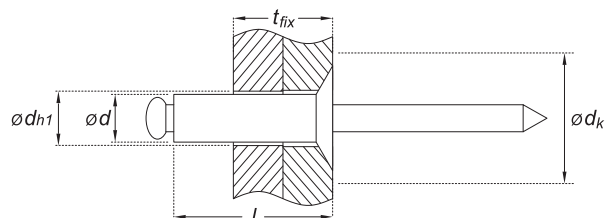


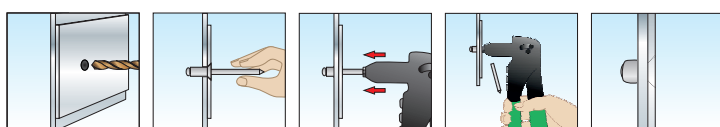
**RV 00** Rivetto a strappo in alluminio, testa svasata, con mandrino in acciaio zincato



SCHEDA TECNICA



<b>Ød x l</b>	diametro corpo rivetto x lunghezza corpo rivetto
<b>t<sub>fix</sub></b>	spessore serraggio (massimo fissabile)
<b>Ød<sub>k</sub></b>	diametro testa
<b>Ød<sub>h1</sub></b>	diametro del foro
<b>cta<sub>min</sub></b>	minimo carico di taglio
<b>ctr<sub>min</sub></b>	minimo carico di trazione



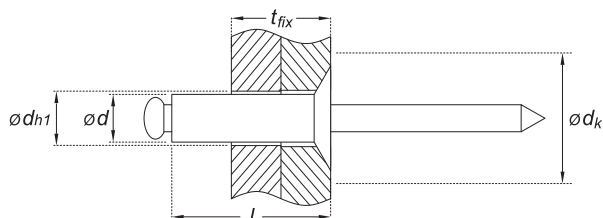
DATI TECNICI E RISULTATI DI PROVA SU ANCORANTI **RV 00**

Codice Articolo	Misura Ød x l (mm)	t <sub>fix</sub> min - max (mm)	Ød <sub>k</sub> (mm)	Ød <sub>h1</sub> (mm)	cta <sub>min</sub> (N)	ctr <sub>min</sub> (N)
<b>Ød 3,2 mm</b>						
RV 00 32 008	3,2 x 8	3,5 - 5	6,5	3,3	500	750
RV 00 32 010	3,2 x 10	5 - 7				
RV 00 32 012	3,2 x 12	7 - 9				
RV 00 32 016	3,2 x 16	9 - 13				
<b>Ød 4 mm</b>						
RV 00 40 008	4 x 8	2 - 5	8,0	4,1	850	1.200
RV 00 40 010	4 x 10	5 - 6,5				
RV 00 40 012	4 x 12	6,5 - 8,5				
RV 00 40 016	4 x 16	8,5 - 12,5				
RV 00 40 020	4 x 20	12,5 - 16,5				
<b>Ød 4,8 mm</b>						
RV 00 48 008	4,8 x 8	2,5 - 4	9,5	5,0	1.200	1.700
RV 00 48 010	4,8 x 10	4 - 6				
RV 00 48 012	4,8 x 12	6 - 8				
RV 00 48 016	4,8 x 16	8 - 12				
RV 00 48 020	4,8 x 20	12 - 15				

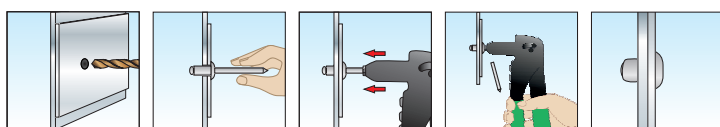
**RV 00** Aluminium alloy open end blind rivet, countersunk head, with zinc plated steel break pull mandrel



**TECHNICAL DATA SHEET**



<b>Ød x l</b>	diameter x length
<b>t<sub>fix</sub></b>	thickness of fixture
<b>Ød<sub>k</sub></b>	head
<b>Ød<sub>h1</sub></b>	hole diameter
<b>cta<sub>min</sub></b>	minimum shear load
<b>ctr<sub>min</sub></b>	minimum tensile load



**TECHNICAL DATA AND TEST REPORT ON RV 00**

Item Code	Size Ød x l (mm)	t <sub>fix</sub> min - max (mm)	Ød <sub>k</sub> (mm)	Ød <sub>h1</sub> (mm)	cta <sub>min</sub> (N)	ctr <sub>min</sub> (N)
<b>Ød 3,2 mm</b>						
RV 00 32 008	3,2 x 8	3,5 - 5	6,5	3,3	500	750
RV 00 32 010	3,2 x 10	5 - 7				
RV 00 32 012	3,2 x 12	7 - 9				
RV 00 32 016	3,2 x 16	9 - 13				
<b>Ød 4 mm</b>						
RV 00 40 008	4 x 8	2 - 5	8,0	4,1	850	1.200
RV 00 40 010	4 x 10	5 - 6,5				
RV 00 40 012	4 x 12	6,5 - 8,5				
RV 00 40 016	4 x 16	8,5 - 12,5				
RV 00 40 020	4 x 20	12,5 - 16,5				
<b>Ød 4,8 mm</b>						
RV 00 48 008	4,8 x 8	2,5 - 4	9,5	5,0	1.200	1.700
RV 00 48 010	4,8 x 10	4 - 6				
RV 00 48 012	4,8 x 12	6 - 8				
RV 00 48 016	4,8 x 16	8 - 12				
RV 00 48 020	4,8 x 20	12 - 15				