

ALLIANCE - Tall unit - Height 1000 / 1600

Materials

- **Front and side Panels (Thickness = 16mm):**
 - Gloss White, Gloss Grey, Gloss Taupe: Laminated particle board lacquered with UV High Gloss polyester paint.
 - Natural, Bay Pine, Sbiancato, Alsacia: Laminated particle board.
 - **Internal Structure panels (Thickness = 16mm):** Laminated particle board on exclusive design Carbon TX
- * All panels used in the manufacture of this unit are classed as E-1 grade with low level of formaldehyde content..
- *Trim varies according to design: PVC, ABS. (edged with PUR glue)

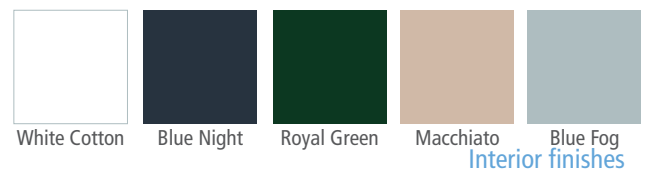
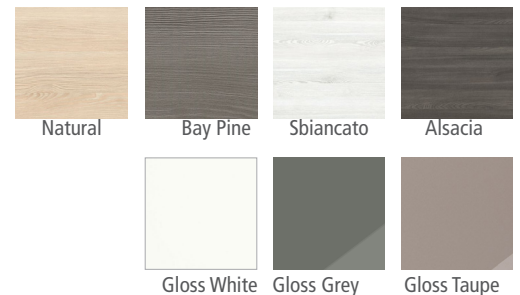


- **Hangers:** high resistance wall brackets with two independent regulations. Certificate according to DIN 68840 (equivalent to 260kg of final load per set).
- **Glass shelves (thickness = 5mm):** height-adjustable
 - Heigh 1000 - 2 units
 - Heigh 1600 - 4 units
- **Doors:**
 - Door without handle: Opening system PUSH
 - Door with handle: Soft closing.

Packaging Dimensions and weight (mm).

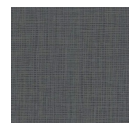
	350x1000	350x1600
Lenght mm.	380	395
Depth mm.	330	345
Height mm.	1430	1660
Net weight Kg.	28	27,5
Gross weight Kg	31,2	29,9

Vanity finishes



Interior finishes

carbon-TX
by Salgar



Dimensional sketch

