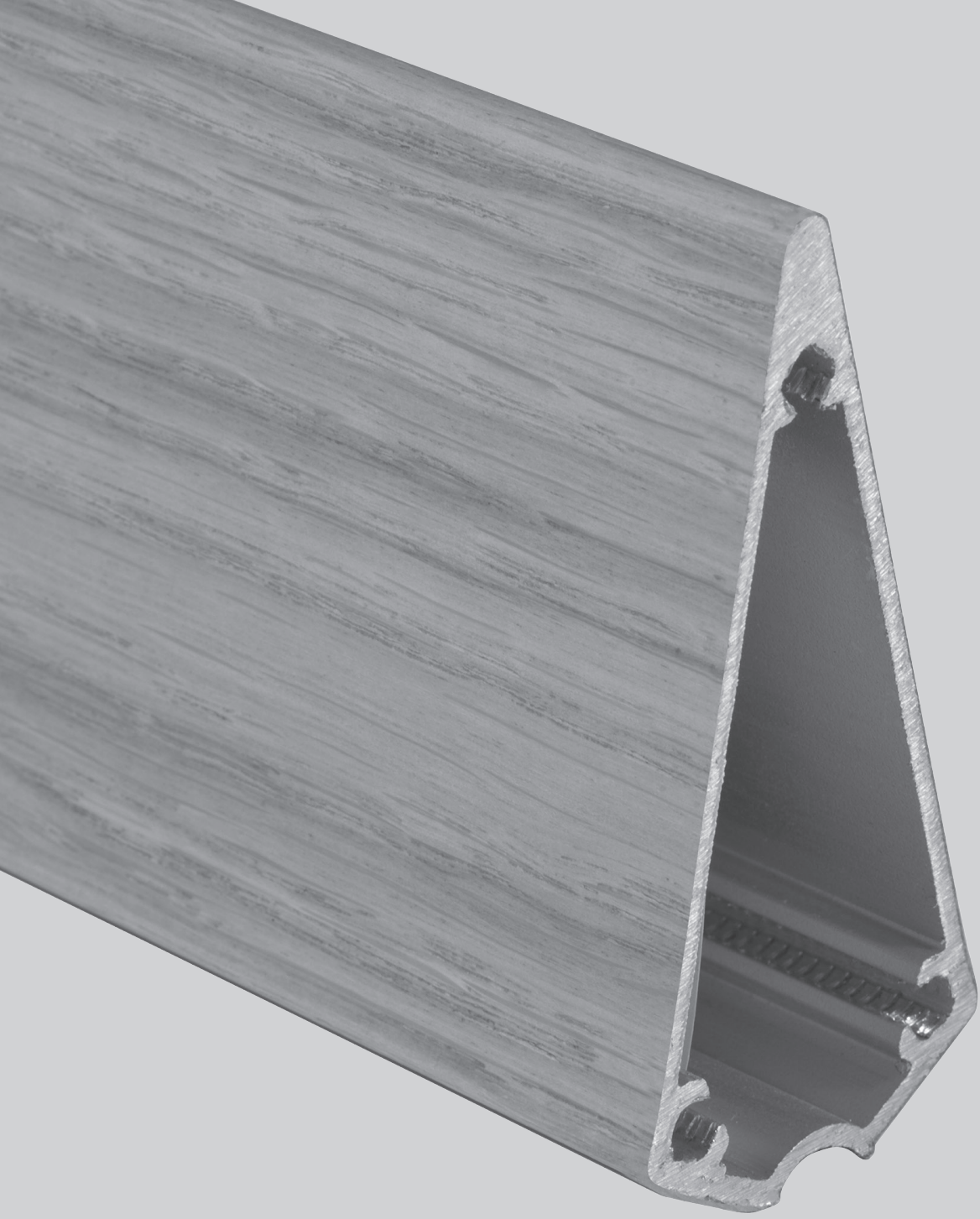


capdell





by Claesson Koivisto Rune

---

# tri-star

Claesson Koivisto Rune

La mesa Tri-Star presenta un peculiar pie central hecho de tres extrusiones de aluminio que conforman una base en forma estrellada de 3 puntas. La estructura puede soportar varios tipos de sobre que convierten a Tri-Star en una colección útil tanto para hogar como para contract.

The Tri-Star table features an unusual central stem with three triangular aluminium extrusions that form a 3-point, star-shaped base. The stem can support various tops, all suitable for different types of domestic or contract needs: round, square or – thanks to a combination of two stems – rectangular. Tri-Star is available in anodised aluminium or with an epoxy varnish in various colours.

## Tri-Star

---

Mesa con sobre contrachapado en roble  
y base columna de aluminio chapada en roble.



977R-LO14R2

Table with plywood in oak and base made of oak  
veneered aluminum.



977R-LO14R2

## Tri-Star

---

Table with transparent glass.  
Aluminium column with oak veneer



977R-TO14

Mesa con cristal transparente.  
Columna de aluminio chapada en roble.

Table with transparent glass and  
aluminum column. Epoxy



**Mesa con cristal transparente y  
columna de aluminio. Epoxi**

977E-TO13





# Tri-Star M

Base columna de aluminio pintada en EPOXI  
Aluminium column painted in EPOXY



## Ref. Base 977E

Sobre MDF de 23 mm. en HAYA a dos caras.  
Canto chaflán. / Top MDF + BEECH veneer both  
sides 23 mm. Chamfer edge.

Tops de O100, O110, O120, O130 cm



Ref. 977E-YO10



Ref. 977E-YO11



Ref. 977E-YO12



Ref. 977E-YO13

# Tri-Star H9

---



## Ref. Base 977R

Sobre HDF de 19 mm. Blanco/antracita. Canto chafán. / HDF Top 19 mm. White/antracite. Chamfer edge.

---

---

Base columna de aluminio chapada en ROBLE  
Aluminium column with OAK veneer

---

Tops de O100, O110, O120, O130, O140 cm

---



Ref. 977R-HO10M2

---



Ref. 977R-HO13M2

---



Ref. 977R-HO11M2

---



Ref. 977R-HO14M2

---



Ref. 977R-HO12M2

---

# Tri-Star H9

Base columna de aluminio pintada en EPOXI  
Aluminium column painted in EPOXY



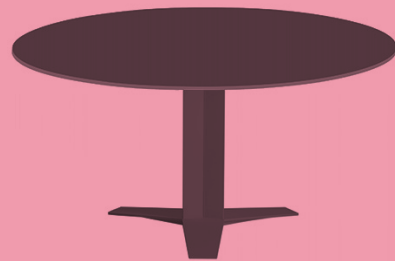
## Ref. Base 977E

Sobre HDF de 19 mm. Blanco/antracita. Canto  
chaflán. / HDF Top 19 mm. White/antracite.  
Chamfer edge.

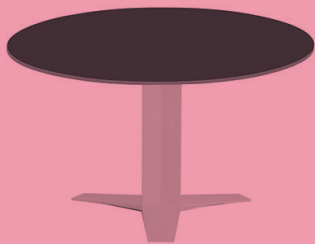
Tops de O100, O110, O120, O130, O140 cm



Ref. 977E-HO10M2



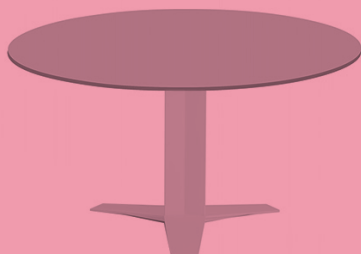
Ref. 977E-HO13M2



Ref. 977E-HO11M2



Ref. 977E-HO14M2



Ref. 977E-HO12M2

# Tri-Star L

---



## Ref. Base 977R

Sobre contrachapado en **ROBLE** a dos caras.  
Canto chaflán. / **OAK** Plywood top. Chamfer edge.

---

---

Base columna de aluminio chapada en **ROBLE**  
Aluminium column with **OAK** veneer

---

Tops de **O100, O110, O120, O130, O140 cm**

---



Ref. 977R-LO10R2

---



Ref. 977R-LO13R2

---



Ref. 977R-LO11R2

---



Ref. 977R-LO14R2

---



Ref. 977R-LO12R2

---

# Tri-Star L

Base columna de aluminio pintada en EPOXI  
Aluminium column painted in EPOXY



## Ref. Base 977E

Sobre contrachapado en ROBLE a dos caras.  
Canto chaflán. / OAK plywood top. Chamfer edge.

Tops de O100, O110, O120, O130, O140 cm



Ref. 977E-LO10R2



Ref. 977E-LO13R2



Ref. 977E-LO11R2



Ref. 977E-LO14R2



Ref. 977E-LO12R2

# Tri-Star G

---



## Ref. Base 977R

Sobre de 12 mm **CRISTAL COLOR. / COLOUR GLASS** top.

---

---

Base columna de aluminio chapada en **ROBLE**  
Aluminium column with **OAK** veneer

Tops de **O100, O110, O120, O130, O140** cm

---



Ref. 977R-GO10

---



Ref. 977R-GO13

---



Ref. 977R-GO11

---



Ref. 977R-GO14

---



Ref. 977R-GO12

---

# Tri-Star G

---



## Ref. Base 977E

Sobre de CRISTAL COLOR 12 mm. / COLOUR  
GLASS top 12 mm.

---

Base columna de aluminio pintada en EPOXI  
Aluminium column painted in EPOXY

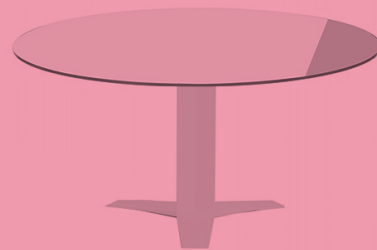
Tops de O100, O110, O120, O130, O140 cm

---



Ref. 977E-GO10

---



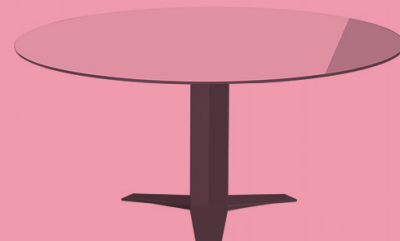
Ref. 977E-GO13

---



Ref. 977E-GO11

---



Ref. 977E-GO14

---



Ref. 977E-GO12

---

# Tri-Star T

Base columna de aluminio chapada en ROBLE  
Aluminium column with OAK veneer



## Ref. Base 977R

Sobre de 12 mm CRISTAL TRANSPARENTE. /  
TRANSPARENT GLASS top 12 mm.

Tops de O100, O110, O120, O130, O140 cm



Ref. 977R-TO10



Ref. 977R-TO13



Ref. 977R-TO11



Ref. 977R-TO14



Ref. 977R-TO12



# Tri-Star T

Base columna de aluminio pintada en EPOXI  
Aluminium column painted in EPOXY



## Ref. Base 977E

Sobre de CRISTAL TRANSPARENTE 12 mm. /  
TRANSPARENT GLASS top 12 mm.

Tops de O100, O110, O120, O130, O140 cm



Ref. 977E-TO10



Ref. 977E-TO13



Ref. 977E-TO11



Ref. 977E-TO14



Ref. 977E-TO12

# claesson koivisto rune

Un estudio multidisciplinar de diseño y arquitectura radicado en Estocolmo. Fue fundado en 1995 por Märten Claesson, Eero Koivisto y Ola Rune, compañeros de clase de la facultad de bellas artes. El trabajo del estudio abarca desde joyería o cepillos de dientes, hasta grandes edificios. Con obras en Suecia, Japón, Francia, Alemania o Estados Unidos, su lenguaje Arquitectónico ha sido denominado “el epítome de la estética del nuevo milenio”. Sus diseños de muebles y otros objetos han sido producidos por primeras firmas de Escandinavia, Alemania, Gran Bretaña, Italia, Estados Unidos y Japón.

A multidisciplinary design and architecture study based in Stockholm. It was founded in 1995 by Märten Claesson, Eero Koivisto and Ola Rune, classmates of the fine arts faculty. The work of the study ranges from jewelry or toothbrushes, to large buildings. With works in Sweden, Japan, France, Germany or the United States, its architectural language has been called “the epitome of the aesthetics of the new millennium”. His designs of furniture and other objects have been produced by first firms of Scandinavia, Germany, Great Britain, Italy, the United States and Japan.



capdell

[www.capdell.com](http://www.capdell.com)