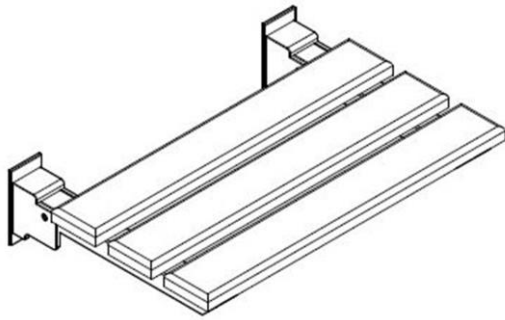


# UNIVERSAL

Teak Bench

# INSTALLATION GUIDELINES

Style No. TEBE10



### SPECIFICATIONS:

Max Load Capacity	250lbs (113.4 kg) "IMPORTANT: Proper Blocking is required to support the 250lbs maximum load"
Dimensions	18.74"(476mm) x 12.93" (328mm)
Plastic Anchor Screws 6 pcs	Ø1/2"(13mm) x 2.95"L
Phillips Pan Head Screws 6 pcs	1/4 x 3-1/2"L
Hinge 2 pcs	1.77"(45mm)x2.95"(75mm) x2.76" (70mm)
Shaft Screw 2 pcs	M8 x 45"L
Metal Plate 2 pcs	1.97"(50mm) x 4.06" (103mm)

### IMPORTANT:

- To ensure this product is installed properly, you must read and follow these guidelines.
- The owner/user of this product must keep this information for future reference.
- This product must be installed by a professional licensed contractor.
- Inspect this product to ensure you have all the parts required for proper installation.
- Use only a flathead screwdriver, a Phillips screwdriver or a protected/smooth-jaw wrench on any finished surface.
- Clean with a cloth. Do not use abrasive cleaning products.
- Discontinue use if any parts appear damaged, degraded or loose.
- **IMPORTANT :** Proper Blocking is required to support the 250lbs maximum load"

- **DO NOT** install the teak bench on glass tile or any other materials prone to damage.
- Use only for sitting. Not to be used for other purposes.

### TEAK BENCH INSTALLATION:

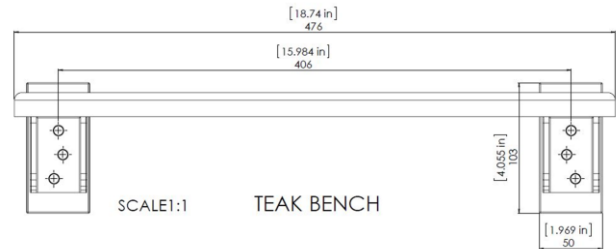


FIGURE - 01 (The borehole sheet)

1. Stick the borehole sheet on the wall where you want to install the teak bench.

### • **NOTE :**

**MAKE SURE BRACKETS A & B ARE LEVEL**

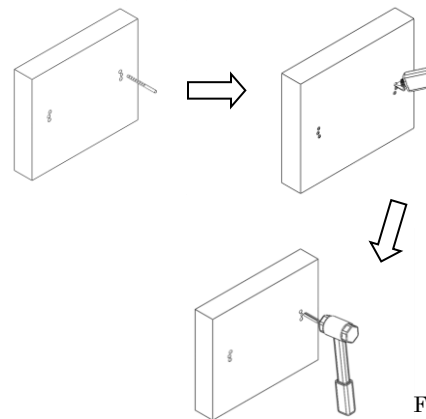


FIGURE - 03

See Figure - 03 for Steps 2 - 3

2. Drill the Ø 7/16"(11mm) holes on the wall as the borehole sheet, the depth of holes must be at least 3"-3.15" (76 - 80mm). The Diameter of the drill holes must not be more than 0.45"(11.5mm), slightly smaller than the width of the anchor Ø 1/2"(13mm).

These guidelines have been prepared for the professional contractor to aid in the installation of **STYLE NO. TEBE10 TEAK BENCH.** All dimensions are based on original specification and are subject to change and variation. Please consult your Design Associate for current specifications.

# WATERWORKS

# UNIVERSAL

## Teak Bench

# INSTALLATION GUIDELINES

- Place some white glue into the hole, and tap the plastic anchors evenly into the holes with a hammer until the anchors are almost flush with the wall.

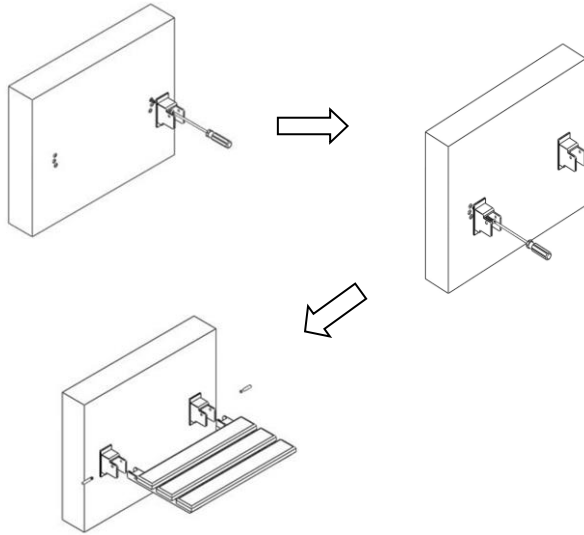


FIGURE – 04

See Figure – 04 for Steps 4 – 5

- Position them to be mounted on the wall, then thread a Phillips pan head screw through each mounting hole into the plastic anchor. Tighten the screw slowly with a Phillips screwdriver until it is snug. Do not over tighten the screw. If you do, the plastic anchor will rotate in the hole and become unstable.

**Make sure the wall brackets are in the level position.**

- Secure the bench assembly in place with the shaft screws.

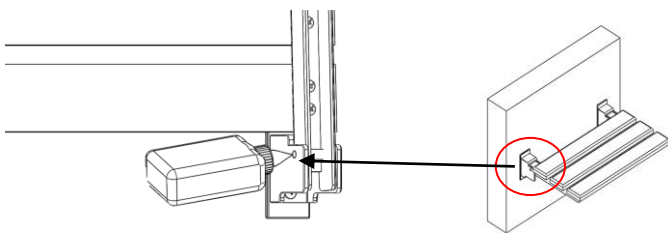


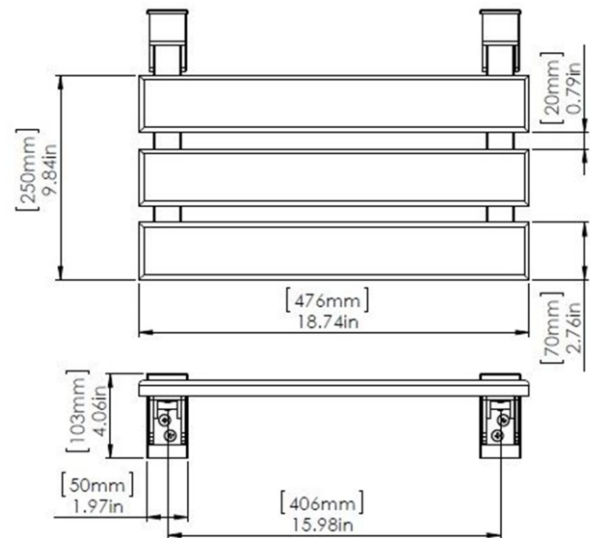
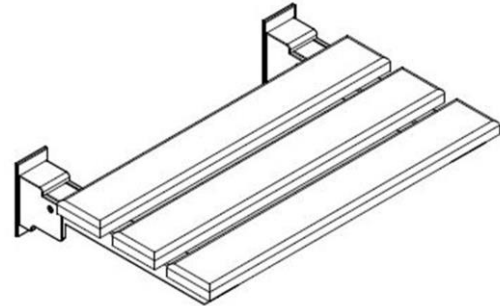
FIGURE – 05

See Figure – 05 for Steps 6 - 7

- Make sure the shaft screws are level to both sides of the hinge, and determine if the seat folds down flat.
- Finally, place some LOCTITE glue on the threads of the

shaft screws on the **inside** of the teak bench for security.

- If further assistance is required, please contact Product Support at 1-800-927-2120 (8am-6pm EST).
- See service part document for parts ordering, available on [WATERWORKS.COM](http://WATERWORKS.COM).



These guidelines have been prepared for the professional contractor to aid in the installation of **STYLE NO. TEBE10 TEAK BENCH**. All dimensions are based on original specification and are subject to change and variation. Please consult your Design Associate for current specifications.

# WATERWORKS