

IMPORTANT

Thank-you for choosing a MERLYN shower door. Please familiarise yourself with these instructions before installing.

- Do you have all the tools required?
- Is the installation site compatible with the size of door supplied?
- Are all the enclosure components present?
- Is the installation kit complete?

<< MAJOR COMPONENTS >>

sizes 800 & 900 in 1 box - size 1000 in 2 boxes



<< FITTING KIT >>

DO NOT attempt to install the product unless you can tick ALL 4 boxes adjacent as satisfactory. The wall plugs supplied with the installation kit are for use in solid walls. Hollow or 'stud-partition' walls will require alternative fixings. Please consult a hardware supplier for the correct type. It may also be necessary to consult your tiling supplier about the correct method for drilling your tiles.



WARNING

HEAVY PRODUCT, ASSISTANCE MAY BE REQUIRED USE SAFETY EYEWEAR WHEN DRILLING

Any parts missing or damaged must be reported to your supplier within 5 days of purchase. Please state size & colour of product and part number as shown for the corresponding size of door. INSPECT DOOR BEFORE FITTING NO CLAIMS WILL BE ACCEPTED AFTER THE DOOR HAS BEEN INSTALLED

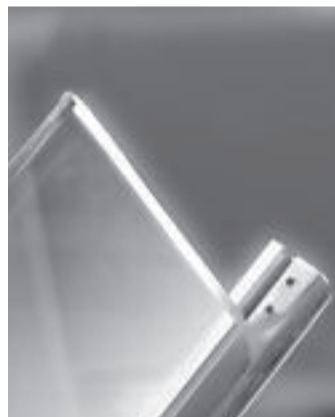
<< TOOLS YOU WILL NEED >>



FITTING INSTRUCTIONS - FOLLOW STEPS IN SEQUENCE



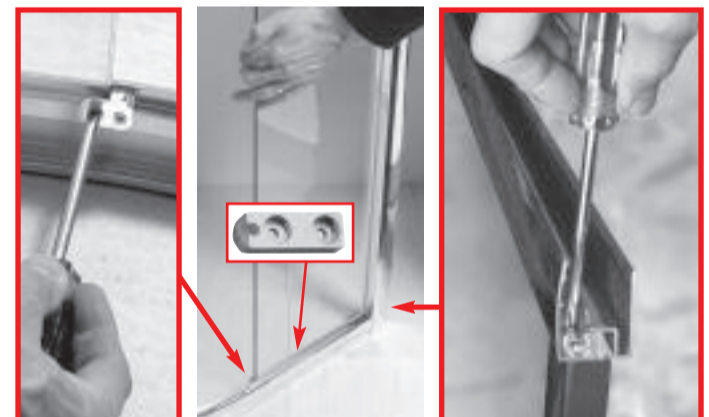
1 Ensure the shower tray is level in all directions and is properly sealed to the wall. The wall must be tiled down to the top edge of the tray. Do not angle out bottom tile.



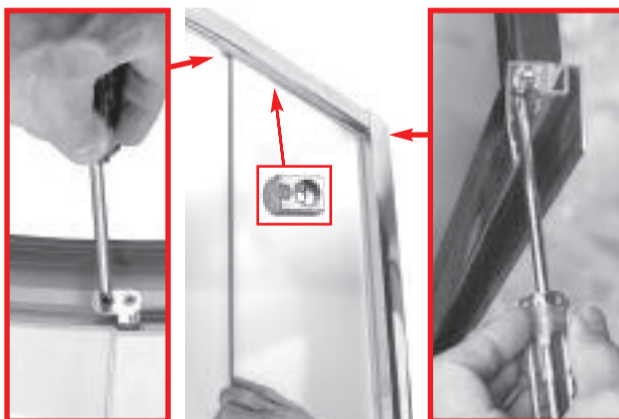
2 Place fixed panel gasket V3211 onto bottom edge of glass.



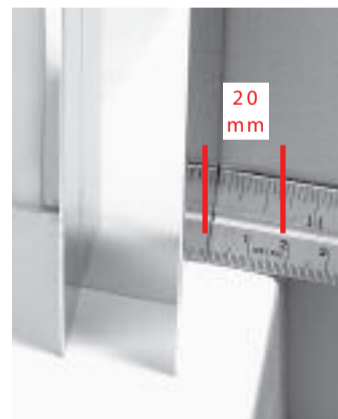
3 Loosen fixed glass panel clip.



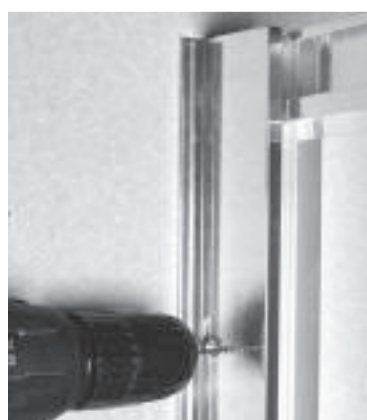
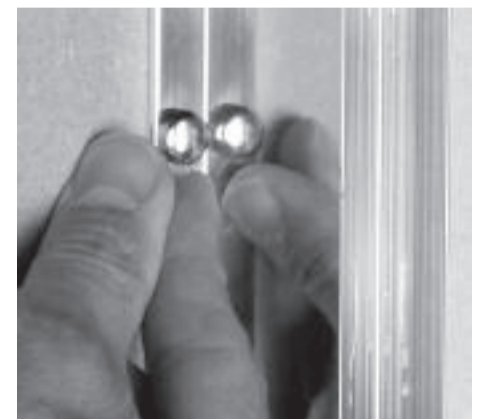
4 Place fixed glass panel into position on bottom rail (with long roller stops) & screw the frame together with screws V4111. Tighten fixed glass panel clip.



5 Repeat steps 2 to 4 for top rail to finish frame. Rail with short roller stops is the top rail.



6 Place both wall profiles V1106 at 20mm from front edge of shower tray to outside edge of wall profile, wall flange to inside, plumb, mark & drill holes. Fix both the wall profiles into position with screws V4111, clips V2110 and caps V2109. 2nd wall profile can be fitted into door frame when lifting onto tray in situations where the enclosure is a tight fit.



7 Place door frame into position on top of shower tray ensuring entry space is in the correct position. Align frame into position, drill through profiles at similar position to wall fixing screws and fix to wall profiles with screws V4110, clips V2110 & snap-on caps V2109.

8 Fit handles V6107 to both doors.



9 Fit moving panels **B** into frame.



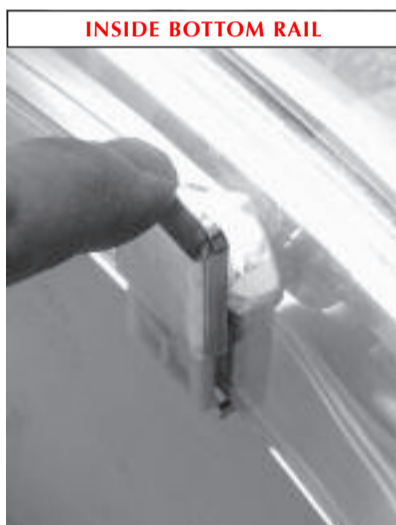
10 Working from inside the enclosure set the doors into the top rail. **Double rollers on top**



NOTE POSITIONING FOR DOUBLE AND SINGLE ROLLERS



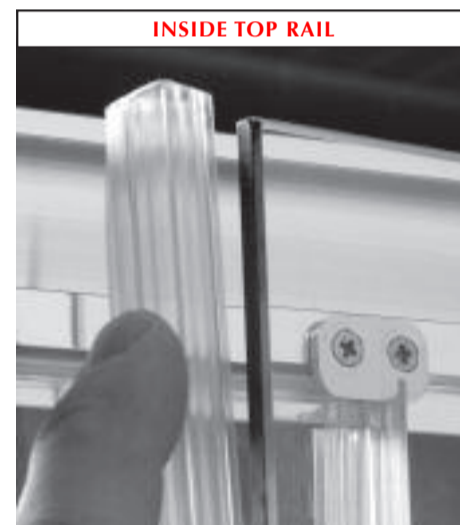
OUTSIDE BOTTOM RAIL



INSIDE BOTTOM RAIL



OUTSIDE BOTTOM RAIL



INSIDE TOP RAIL



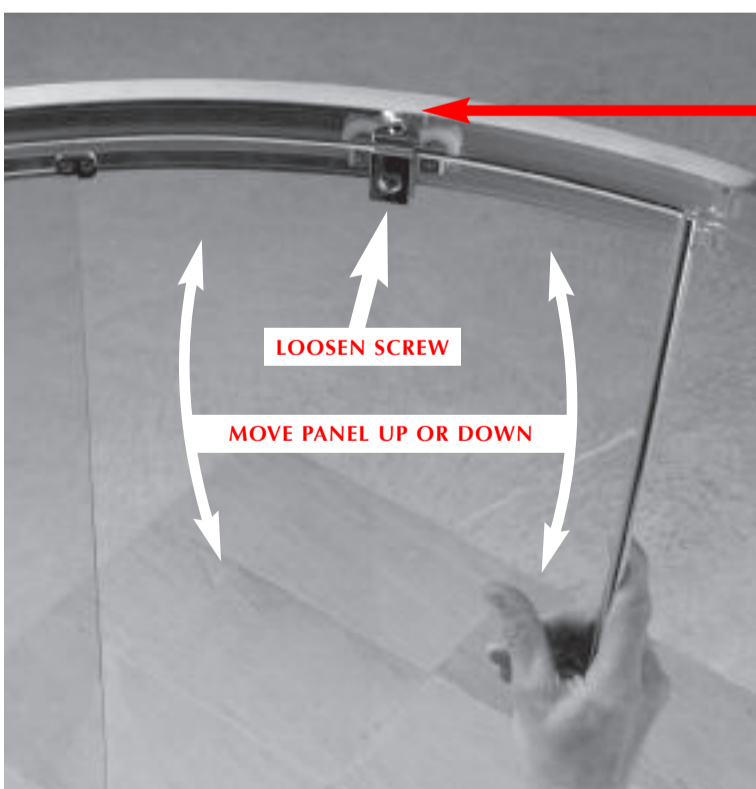
INSIDE TOP RAIL

11 Working from the outside. Press down on quick release rollers & insert into bottom rail. Fit chrome covers V6103 to inside of single rollers.

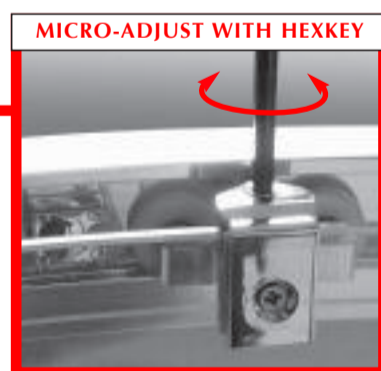
Press down on bottom rollers to gain easy access for cleaning

12 Fit short, upright plastic seals V3103 on front of fixed panels & long seals, V3107 on backs of moving panels. **Ensure the bottom of the fixed panel seal V3103 sits tight to the fixed glass panel clip.**

Ensure soft plastic parts of seals are facing each other.



13 Ensure doors are closing correctly. **MAIN ADJUSTMENT** is made by loosening the top roller retaining screws and moving the glass panel up or down. When correct, secure screw. Micro-adjust with hexkey as shown. **Door is correctly adjusted when top & bottom wheels hit roller stops evenly.**



MICRO-ADJUST WITH HEXKEY



14 Press on cover caps V2104 to wall profiles and V2101L/R to frame profiles.



15 When doors are operating correctly & magnetic seal is fully aligned proceed to sealing of unit.



24 HRS

Seal wall profile flanges to wall on inside vertically. Seal bottom rail to shower tray horizontally on outside only. Seal upright profile to wall from shower tray approx 100mm vertically on outside. Seal all vertical joints on bottom of frame on outside only. Allow unit 24hrs to set.