

Arpa18_2 Orizzontale

Arpa18_2 Orizzontale rappresenta una moderna estetica che si integra in qualsiasi ambiente. Lo stile di Arpa18_2 si completa nella modulare funzionalità.



Arpa18 2, orizzontale, 20 elementi, altezza 2020 mm, larghezza 364 mm, Nero Grafite

Caratteristiche costruttive

collettori a sezione circolare diametro 30 mm
elementi in lamiera d'acciaio diametro 18 mm
filettature estremità collettore 1/2" Gas destra
pressione di esercizio massima ammessa: 10 bar
temperatura di esercizio massima ammessa: 95°C

Dotazione di serie

sistemi di fissaggio al muro con viti e tasselli
tappo cieco da 1/2" con copri tappo
valvola sfiato da 1/2"

Certificazioni



Plus



Dati tecnici

| Modello | Profondità (mm) | Lunghezza (mm) | Interasse (mm) | Peso (kg) | Capacità (lt) |
|---------|-----------------|----------------|----------------|-----------|---------------|
| 520 | 62,0 | 520 | 470 | 0,54 | 0,23 |
| 550 | 62,0 | 550 | 500 | 0,57 | 0,24 |
| 650 | 62,0 | 650 | 600 | 0,66 | 0,28 |
| 670 | 62,0 | 670 | 620 | 0,68 | 0,29 |
| 700 | 62,0 | 700 | 650 | 0,71 | 0,30 |
| 750 | 62,0 | 750 | 700 | 0,75 | 0,32 |
| 850 | 62,0 | 850 | 800 | 0,84 | 0,36 |
| 870 | 62,0 | 870 | 820 | 0,86 | 0,37 |
| 920 | 62,0 | 920 | 870 | 0,91 | 0,39 |
| 1220 | 62,0 | 1220 | 1170 | 1,18 | 0,50 |
| 1520 | 62,0 | 1520 | 1470 | 1,46 | 0,62 |
| 1820 | 62,0 | 1820 | 1770 | 1,73 | 0,74 |
| 2020 | 62,0 | 2020 | 1970 | 1,92 | 0,82 |
| 2220 | 62,0 | 2220 | 2170 | 2,10 | 0,90 |
| 2520 | 62,0 | 2520 | 2470 | 2,37 | 1,01 |

(*) Grazie alle elevate prestazioni dei radiatori Arpa18_2 Orizzontale, il Δt ideale per la progettazione a bassa temperatura è 30°C

Per Δt diversi da 50°C utilizzare la formula: $Q=Q_n (\Delta t / 50)^n$

Dotazione di serie

- sistemi di fissaggio al muro con viti e tasselli • tappo cieco da 1/2" con copri tappo • valvola sfiato da 1/2"

Numero Elementi 4 6 8 10 12 14 16 18 20 22 24 26 28 30 32 34 36 38 40 42 44 46 48 50

Resa a mt lineare Kcal/h a $\Delta t=50^\circ\text{C}$ 272,7368,9465,1561,3657,5753,7849,9946,1 1.024,31.096,21.160,71.221,81.275,91.324,71.368,21.402,71.440,71.470,11.495,41.567,11.638,91.710,71.782,51.854

Resa a mt lineare Watt a $\Delta t=50^\circ\text{C}$ 317,1429,0540,8652,7764,5876,4988,21.100,11.191,01.274,61.349,71.420,71.483,61.540,31.590,91.631,01.675,21.709,41.738,81.822,31.905,71.989,22.072,62.156

| | | | | |
|--|--|-------|-------|---|
| Resa a mt lineare Watt a $\Delta t=40^{\circ}\text{C}$ | 242,4327,7412,9497,6585,5674,0756,9834,8 | 903,1 | 965,8 | 1.022,01.075,01.122,41.165,11.203,21.232,81.265,31.290,31.311,61.377,01.437,21.504,61.567,51.63 |
| Resa a mt lineare Watt a $\Delta t=30^{\circ}\text{C}$ | 171,4231,6291,6350,8415,0480,5536,6584,9 | 632,2 | 675,5 | 714,1 750,4 783,4 813,0 839,4 859,4 881,2 897,9 911,9 959,6 998,9 1.049,81.093,41.13 |
| Resa a mt lineare Watt a $\Delta t=20^{\circ}\text{C}$ | 105,2142,0178,6214,3255,5298,2330,5354,2 | 382,4 | 408,0 | 430,8 452,2 471,9 489,6 505,3 516,8 529,2 538,6 546,4 576,7 598,2 632,1 658,1 684 |
| Esponente modifica | 1,2041,2071,2091,2151,1961,1771,1951,237 | 1,240 | 1,243 | 1,246 1,249 1,250 1,251 1,252 1,254 1,258 1,260 1,263 1,256 1,264 1,251 1,252 1,25 |

Rese a batteria

| Altezza (mm) | N° Elementi | 520 | 550 | 650 | 670 | 700 | 750 | 850 | 870 | 920 | 1220 | 1520 | 1820 | 2020 | 2220 | 2520 |
|--------------|-------------|-----------------------|------|------|------|------|------|------|------|------|------|------|------|------|------|------|
| 109 | 4 | $Watt = 165$ $W =$ | 174 | 206 | 212 | 222 | 238 | 270 | 276 | 292 | 387 | 482 | 577 | 641 | 704 | 799 |
| 163 | 6 | $Watt = 223$ $W =$ | 236 | 279 | 287 | 300 | 322 | 365 | 373 | 395 | 523 | 652 | 781 | 866 | 952 | 1081 |
| 217 | 8 | $Watt = 281$ $W =$ | 297 | 352 | 362 | 379 | 406 | 460 | 471 | 498 | 660 | 822 | 984 | 1092 | 1201 | 1363 |
| 271 | 10 | $Watt = 339$ $W =$ | 359 | 424 | 437 | 457 | 490 | 555 | 568 | 600 | 796 | 992 | 1188 | 1318 | 1449 | 1645 |
| 325 | 12 | $Watt = 398$ $W =$ | 420 | 497 | 512 | 535 | 573 | 650 | 665 | 703 | 933 | 1162 | 1391 | 1544 | 1697 | 1927 |
| 379 | 14 | $Watt = 456$ $W =$ | 482 | 570 | 587 | 613 | 657 | 745 | 762 | 806 | 1069 | 1332 | 1595 | 1770 | 1946 | 2208 |
| 433 | 16 | $Watt = 514$ $W =$ | 544 | 642 | 662 | 692 | 741 | 840 | 860 | 909 | 1206 | 1502 | 1799 | 1996 | 2194 | 2490 |
| 487 | 18 | $Watt = 572$ $W =$ | 605 | 715 | 737 | 770 | 825 | 935 | 957 | 1012 | 1342 | 1672 | 2002 | 2222 | 2442 | 2772 |
| 541 | 20 | $Watt = 619$ $W =$ | 655 | 774 | 798 | 834 | 893 | 1012 | 1036 | 1096 | 1453 | 1810 | 2168 | 2406 | 2644 | 3001 |
| 595 | 22 | $Watt = 663$ $W =$ | 701 | 828 | 854 | 892 | 956 | 1083 | 1109 | 1173 | 1555 | 1937 | 2320 | 2575 | 2830 | 3212 |
| 649 | 24 | $Watt = 702$ $W =$ | 742 | 877 | 904 | 945 | 1012 | 1147 | 1174 | 1242 | 1647 | 2052 | 2456 | 2726 | 2996 | 3401 |
| 703 | 26 | $Watt = 739$ $W =$ | 781 | 923 | 952 | 994 | 1066 | 1208 | 1236 | 1307 | 1733 | 2159 | 2586 | 2870 | 3154 | 3580 |
| 757 | 28 | $Watt = 771$ $W =$ | 816 | 964 | 994 | 1039 | 1113 | 1261 | 1291 | 1365 | 1810 | 2255 | 2700 | 2997 | 3294 | 3739 |
| 811 | 30 | $Watt = 801$ $W =$ | 847 | 1001 | 1032 | 1078 | 1155 | 1309 | 1340 | 1417 | 1879 | 2341 | 2803 | 3111 | 3419 | |
| 865 | 32 | $Watt = 827$ $W =$ | 875 | 1034 | 1066 | 1114 | 1193 | 1352 | 1384 | 1464 | 1941 | 2418 | 2895 | 3214 | | |
| 919 | 34 | $Watt = 848$ $W =$ | 897 | 1060 | 1093 | 1142 | 1223 | 1386 | 1419 | 1501 | 1990 | 2479 | 2968 | 3295 | | |
| 973 | 36 | $Watt = 871$ $W =$ | 921 | 1089 | 1122 | 1173 | 1256 | 1424 | 1457 | 1541 | 2044 | 2546 | 3049 | 3384 | | |
| 1027 | 38 | $Watt = 889$ $W =$ | 940 | 1111 | 1145 | 1197 | 1282 | 1453 | 1487 | 1573 | 2085 | 2598 | 3111 | | | |
| 1081 | 40 | $Watt = 904$ $W =$ | 956 | 1130 | 1165 | 1217 | 1304 | 1478 | 1513 | 1600 | 2121 | 2643 | 3165 | | | |
| 1135 | 42 | $Watt = 948$ $W =$ | 1002 | 1184 | 1221 | 1276 | 1367 | 1549 | 1585 | 1676 | 2223 | 2770 | | | | |
| 1189 | 44 | $Watt = 991$ $W =$ | 1048 | 1239 | 1277 | 1334 | 1429 | 1620 | 1658 | 1753 | 2325 | 2897 | | | | |

| Altezza (mm) | N° Elementi | | 520 | 550 | 650 | 670 | 700 | 750 | 850 | 870 | 920 | 1220 | 1520 | 1820 | 2020 | 2220 | 2520 |
|--------------|-------------|---------------|------|------|------|------|------|------|------|------|------|------|------|------|------|------|------|
| 1243 | 46 | Watt = W = | 1034 | 1094 | 1293 | 1333 | 1392 | 1492 | 1691 | 1731 | 1830 | 2427 | 3024 | | | | |
| 1297 | 48 | Watt = W = | 1078 | 1140 | 1347 | 1389 | 1451 | 1554 | 1762 | 1803 | 1907 | 2529 | | | | | |
| 1351 | 50 | Watt = W = | 1121 | 1186 | 1401 | 1445 | 1509 | 1617 | 1833 | 1876 | 1984 | 2630 | | | | | |
| 1405 | 52 | Watt = W = | 1165 | 1232 | 1456 | 1500 | 1568 | 1680 | 1904 | 1948 | 2060 | 2732 | | | | | |
| 1459 | 54 | Watt = W = | 1208 | 1278 | 1510 | 1556 | 1626 | 1742 | 1975 | 2021 | 2137 | 2834 | | | | | |
| 1513 | 56 | Watt = W = | 1251 | 1324 | 1564 | 1612 | 1685 | 1805 | 2045 | 2094 | 2214 | 2936 | | | | | |
| 1567 | 58 | Watt = W = | 1295 | 1369 | 1618 | 1668 | 1743 | 1867 | 2116 | 2166 | 2291 | | | | | | |
| 1621 | 60 | Watt = W = | 1338 | 1415 | 1673 | 1724 | 1801 | 1930 | 2187 | 2239 | 2367 | | | | | | |

Colori e finiture

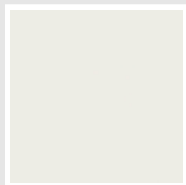
STANDARD



Bianco Standard

Cod. 01

CLASSIC



Bianco Edelweiss

Cod. 34



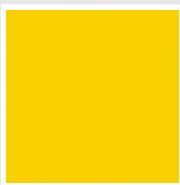
Avorio - RAL 1013

Cod. 02



Beige Cream

Cod. 26



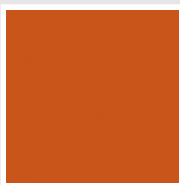
Giallo - RAL 1021

Cod. 04



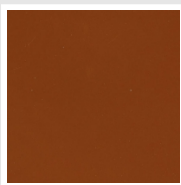
**Giallo Melone -
RAL 1028**

Cod. E7



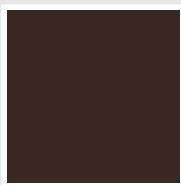
Arancio - RAL 2004

Cod. 17



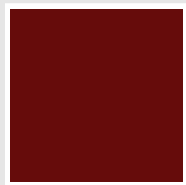
**Marrone Ruggine -
RAL 8004**

Cod. E1



Marrone - RAL 8017

Cod. 09



**Amaranto - RAL
3003**

Cod. 06



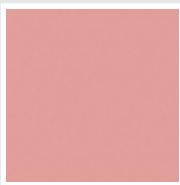
Rosso - RAL 3000

Cod. 05



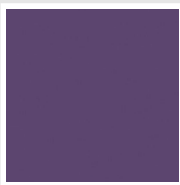
**Rosso Fragola -
RAL 3018**

Cod. Y3



Rosa - RAL 3015

Cod. R2



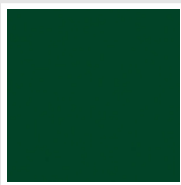
**Lilla Bluastro - RAL
4005**

Cod. R3



**Porpora Traffico -
RAL 4006**

Cod. R6



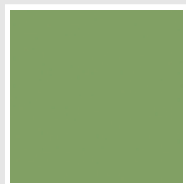
**Verde Bosco - RAL
6005**

Cod. 19



**Verde Erba - RAL
6018**

Cod. N3



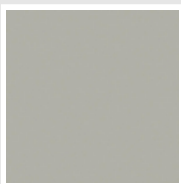
**Verde Salvia - RAL
6021**

Cod. E6



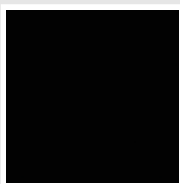
**Blu Pastello - RAL
5024**

Cod. G7



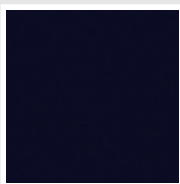
Grigio Manhattan

Cod. 03



Nero - RAL 9005

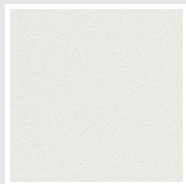
Cod. 10



Deep Blue

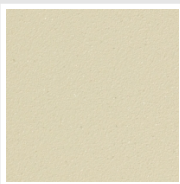
Cod. 2F

SPECIAL



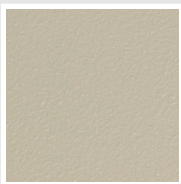
Bianco Perla

Cod. 16



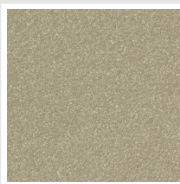
Quartz 1

Cod. 1C



Sablé

Cod. Y4



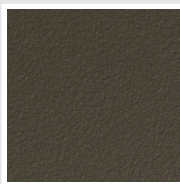
Quartz 2

Cod. 2C



Sunstone

Cod. 2D



Bruno Tabacco

Cod. 1B



Flame Red

Cod. 7D



Purple Blue

Cod. 1D



Azurite 3
Cod. 6C

Grigio Medio
Cod. 4D

**Grigio Titanio
Metallizzato - RAL
9023**
Cod. L3

Grigio Perla
Cod. L6

Nero Grafite
Cod. 18

Grigio Quarzo
Cod. 31

Nero Satinato
Cod. 30

Bianco Opaco
Cod. J8



Nero Opaco
Cod. K1

Agave
Cod. 9N

Blu Baltico
Cod. 1P

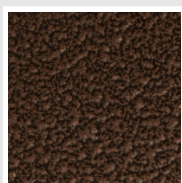
Ghiaccio
Cod. 3P

**Blu Colomba
Opaco - RAL 5014**
Cod. 4P

**Grigio Chiaro
Opaco**
Cod. 8N

**Grigio Cenere - Ral
7021**
Cod. G1

Grigio Martellato
Cod. 32



Rame Martellato
Cod. J4

RAL



Altri colori RAL (previa fattibilità)
Cod. ALTRIRAL

I colori rappresentati in questa cartella non sono da considerarsi impegnativi. I diversi processi tecnologici di verniciatura ed i materiali utilizzati per la realizzazione possono non avere una perfetta corrispondenza cromatica con il prodotto consegnato. L'azienda Irsap si riserva la facoltà di apportare in qualsiasi momento tutte le modifiche necessarie per il miglioramento del prodotto.