

36 120 845



- automatic diverter
- cover plate 150 x 90 mm
- WRAS 2207012

| | | |
|--|-----------------------|---------------|
|  | Dark Chrome | 36 120 845-19 |
|  | Chrome | 36 120 845-00 |
|  | Brushed Platinum | 36 120 845-06 |
|  | Brushed Light Gold | 36 120 845-27 |
|  | Matte Black | 36 120 845-33 |
|  | Brushed Chrome | 36 120 845-93 |
|  | Brushed Dark Platinum | 36 120 845-99 |

Required miscellaneous



Concealed single-lever mixer with backflow preventor - 35 021 970 90
 • max. recess depth 105 mm
 • min. recess depth 80 mm

Recommended miscellaneous



xGRID Attachment set for integrating in the dry wall construction - 12 340 970 90

Required miscellaneous



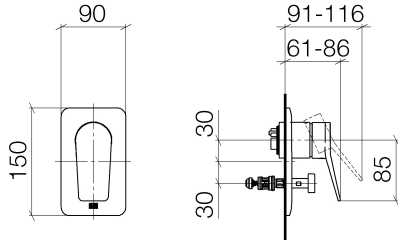
Concealed single-lever mixer - 35 020 970 90
 • max. recess depth 105 mm
 • min. recess depth 80 mm

Required miscellaneous

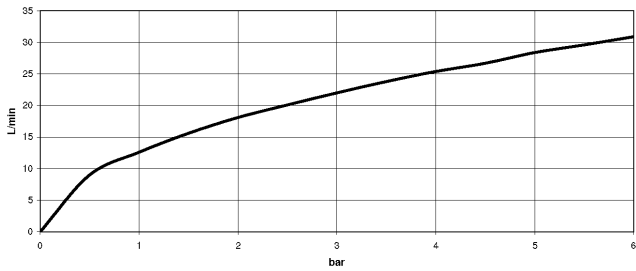


xGRID Installation track 555 mm - 12 360 970 90

36 120 845



Flow rate chart



Codes & Standards

DIN 4109

ISO 3822

Scottish Water
Byelaws

UK Water Supply
Regulations

Ü-Zeichen



LISSÉ Concealed single-lever mixer with diverter - Dark Chrome

LISSÉ

36 120 845

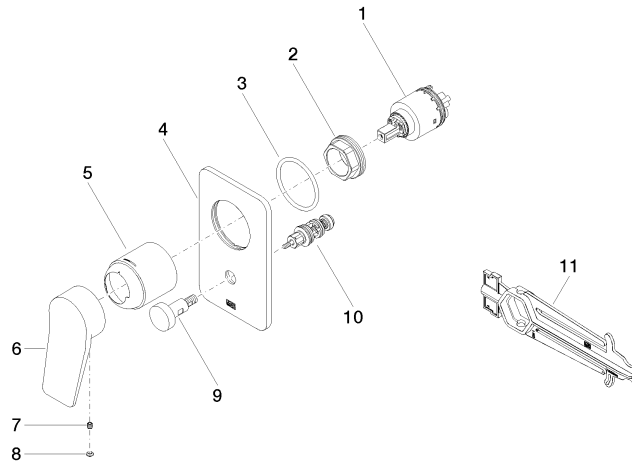
Certificates

WRAS_2207

LGA_19

36 120 845

Product version from 2/20/2020





LISSÉ Concealed single-lever mixer with diverter - Dark Chrome

LISSÉ

36 120 845

Spare parts list

Product version from 2/20/2020

| No. | Item Number | Name | Quantity used | Delivery time |
|-----|--------------------|-----------|---------------|---------------|
| | 90 15 05 039 00 90 | cartridge | 11 | 2 |